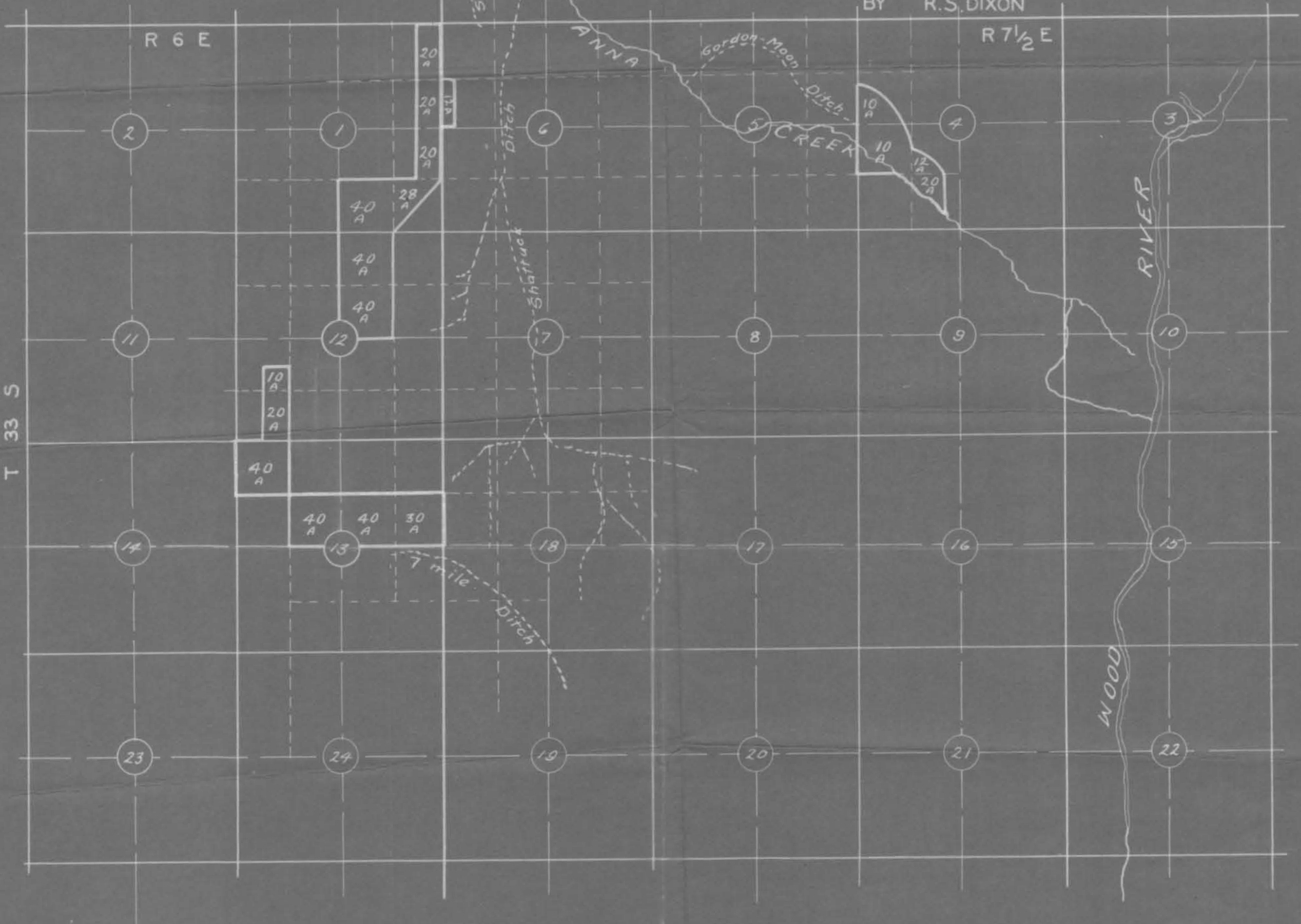


MAP

TO ACCOMPANY APPLICATION
FOR APPROPRIATION OF WATER
BY R.S. DIXON



SURVEYOR'S CERTIFICATE

I, JOS. JENSON, OF KLAMATH FALLS, OREGON, DO HEREBY CERTIFY THAT THIS MAP WAS COMPILED BY ME FROM PLATS FILED IN CONNECTION WITH DECREE OF ^{STATE} WATER BOARD, OF DATE AUGUST 14, 1925. ADJUDICATING WATER RIGHTS OF ANNA CREEK; AND THAT IT CORRECTLY REPRESENTS THE LOCATION OF DITCHES, WATER COURSES, AND OTHER PERTINENT FACTS RELATIVE TO THESE APPLICATIONS TO THE BEST OF MY INFORMATION AND BELIEF.

Jos Jenson
SURVEYOR