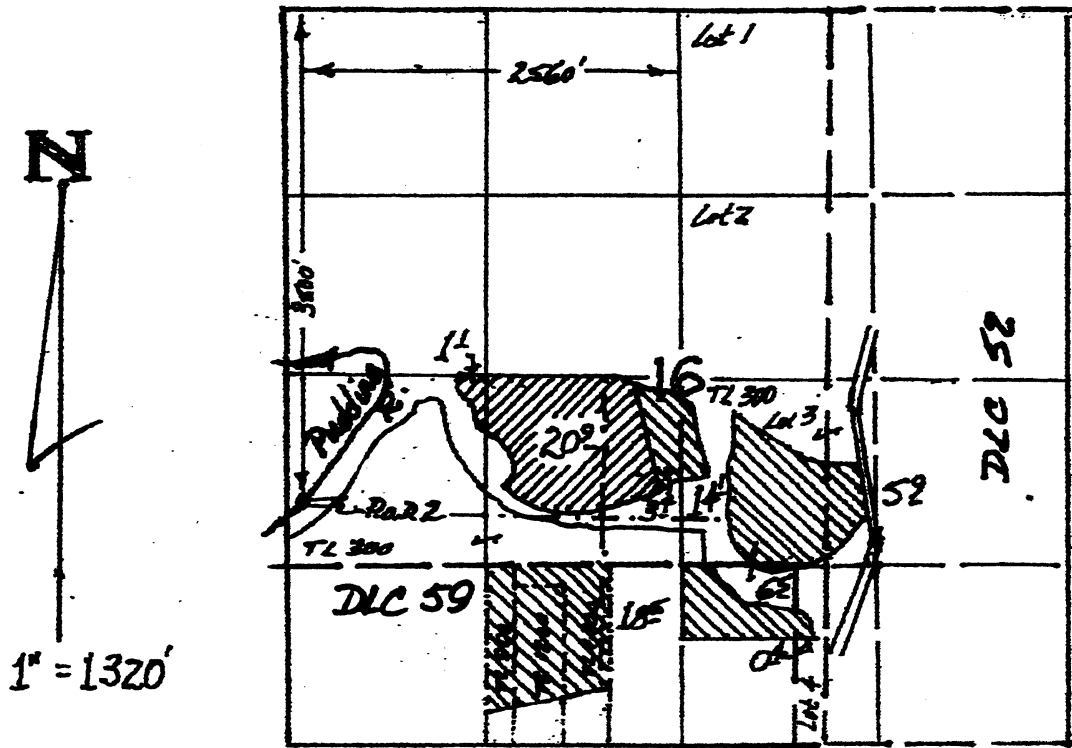




T.6 S., R. 1 W., W.M.



Fish screens are located on the pump intake in the river; meter is on the mainline about 25' east of the pump/motor.

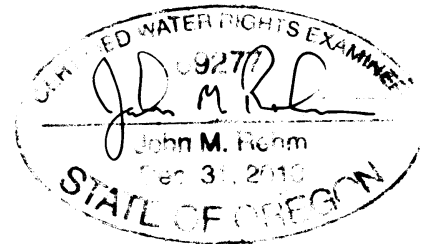
-  CERT. 6088
-  CERT. 35995

**CLAIM of BENEFICIAL USE MAP**

for

**Eder Brothers, Inc.**

**Under Transfer 11061**



This map is for the purpose of identifying the location of water rights only, and is not intended to provide legal dimensions or locations of property lines.