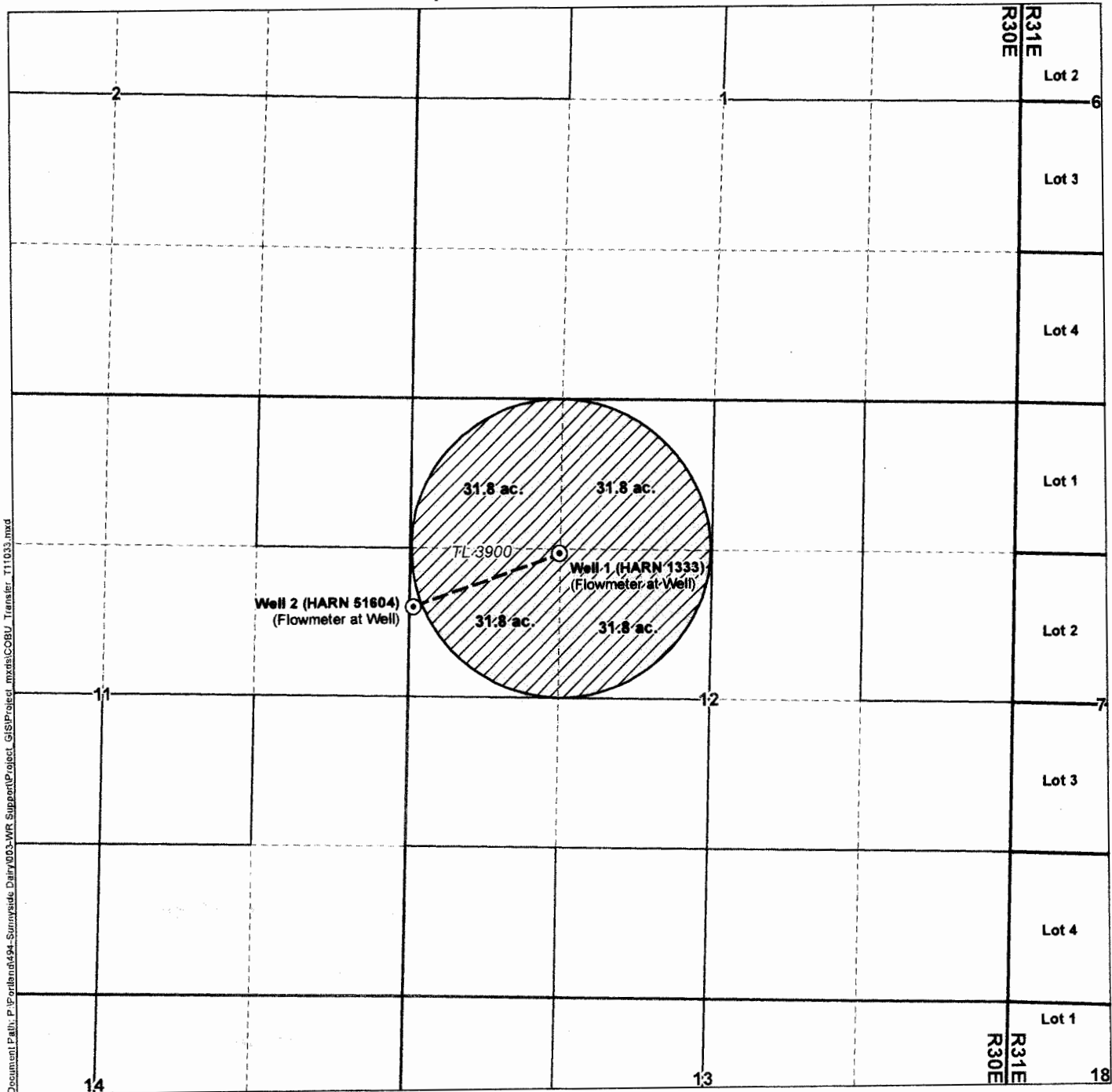


Claim of Beneficial Use Transfer T-11033 (Permit G-12703, Application G-13437)

A Water Right in the Name of Sunnyside Dairy, LLC
Harney County, Oregon
Township 26 South, Range 30 East (W.M.)



Document Path: P:\Partlans\6494-Sunnyside Dairy\003-WR Support\Project_GIS\Project_mxd\GIS\COBU_Transfer_T11033.mxd

LEGEND

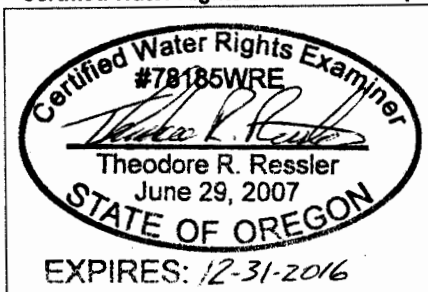
- Place of Use (POU)
- Point of Appropriation (POA)
- Water Conveyance Mainline
- Government Lots
- Tax Lots

POA LOCATION DESCRIPTIONS

Well 1 (HARN 1333)
Located 1,360 feet South and 1,310 feet East from the NW corner of Section 12 (SWNW), Township 26 South, Range 30 East (W.M.)

Well 2 (HARN 51604)
Located 1,840 feet South and 30 feet East from the NW corner of Section 12 (SWNW), Township 26 South, Range 30 East (W.M.)

Certified Water Rights Examiner Stamp



DISCLAIMER

This map was prepared for the purpose of identifying the location of a water right only and it is not intended to provide legal dimensions or location of property ownership lines.

MAP NOTES

Date: February 15, 2016
Data Sources: OWRD, US BLM, USGS, ESRI
Prepared By: GSI Water Solutions, Inc.

