

T 20 S, R 5 W, Sec 20

Tax Lot 302

Ponds in NE 1/4 NE 1/4

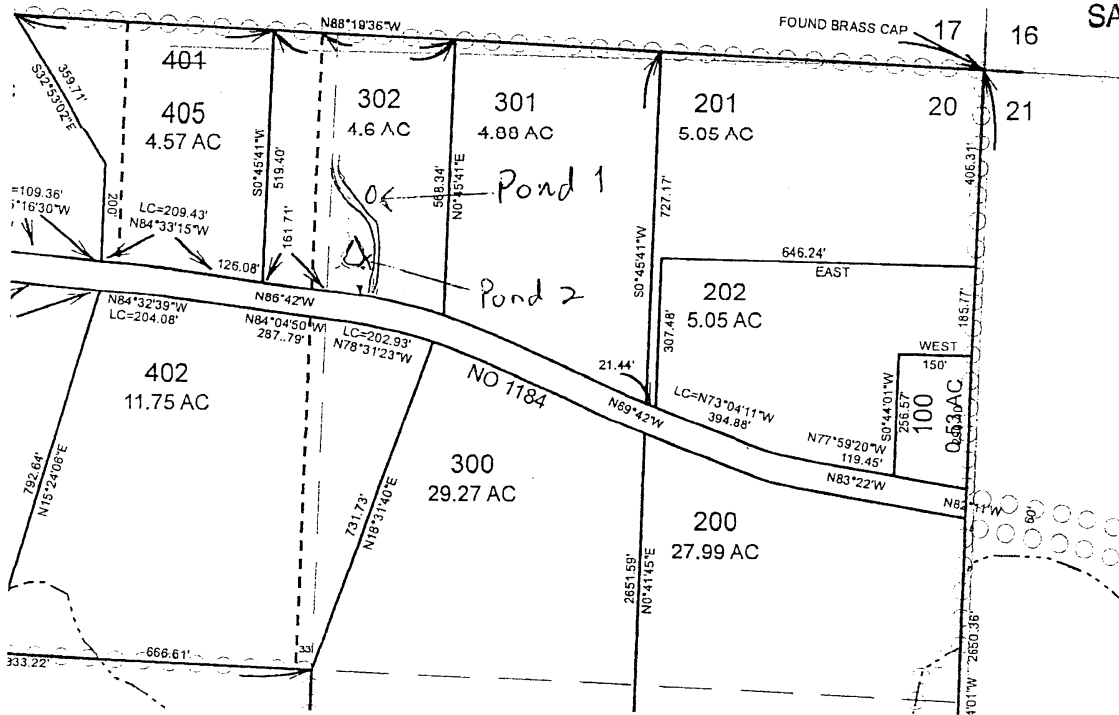
Pond 1 300' S, 1260' W

Pond 2 430' S, 1280' W from NE Sec Corner

RECEIVED BY OWRD

DEC 09 2015

SALEM, OR



1" = 400'

RECEIVED BY OWRD

SEP 16 2015

SALEM, OR

Steve Haney

Permit R-15123