

T 20 S, R 5 W, Sec 20

RECEIVED BY OWRD

Tax Lot 302

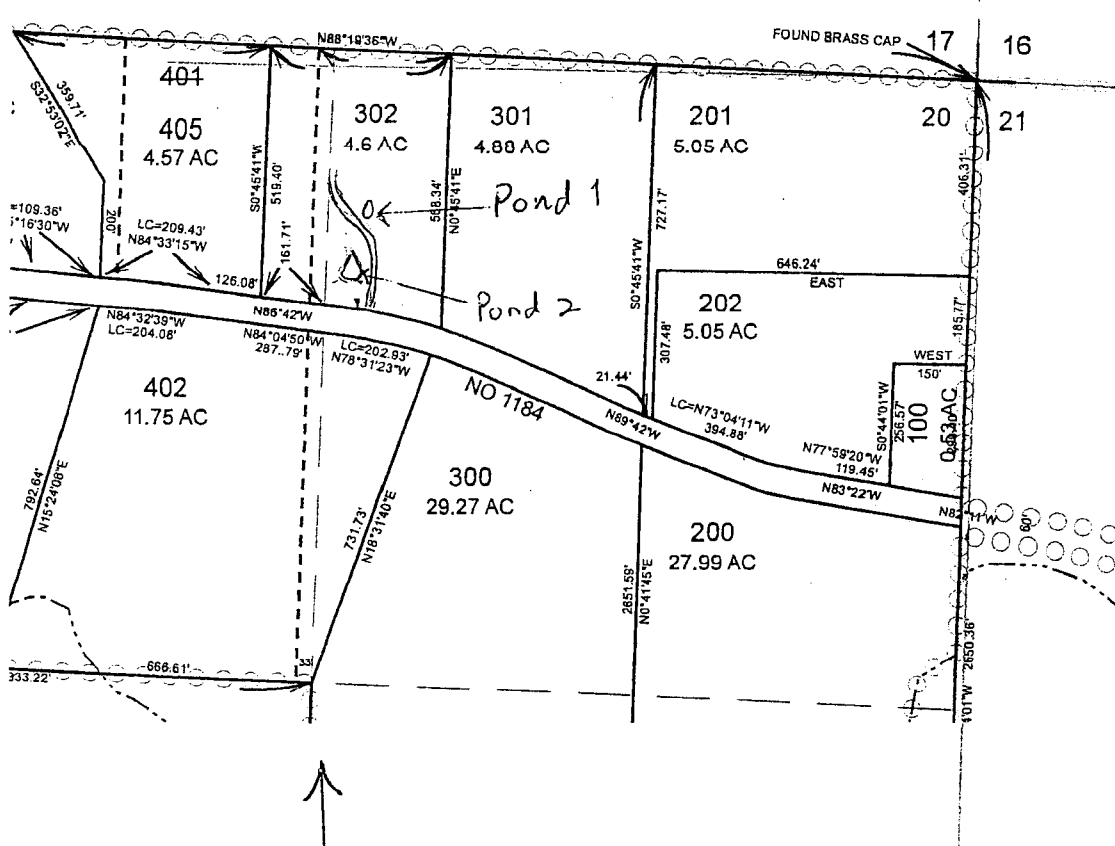
DEC 09 2015

Ponds in NE 1/4 NE 1/4

SALEM, OR

Pond 1 300' S, 1260' W

Pond 2 430' S, 1280' W from NE Sec Corner



1" = 400'

RECEIVED BY OWRD

SEP 15 2015

Steve Haney

SALEM, OR

Permit R-15123