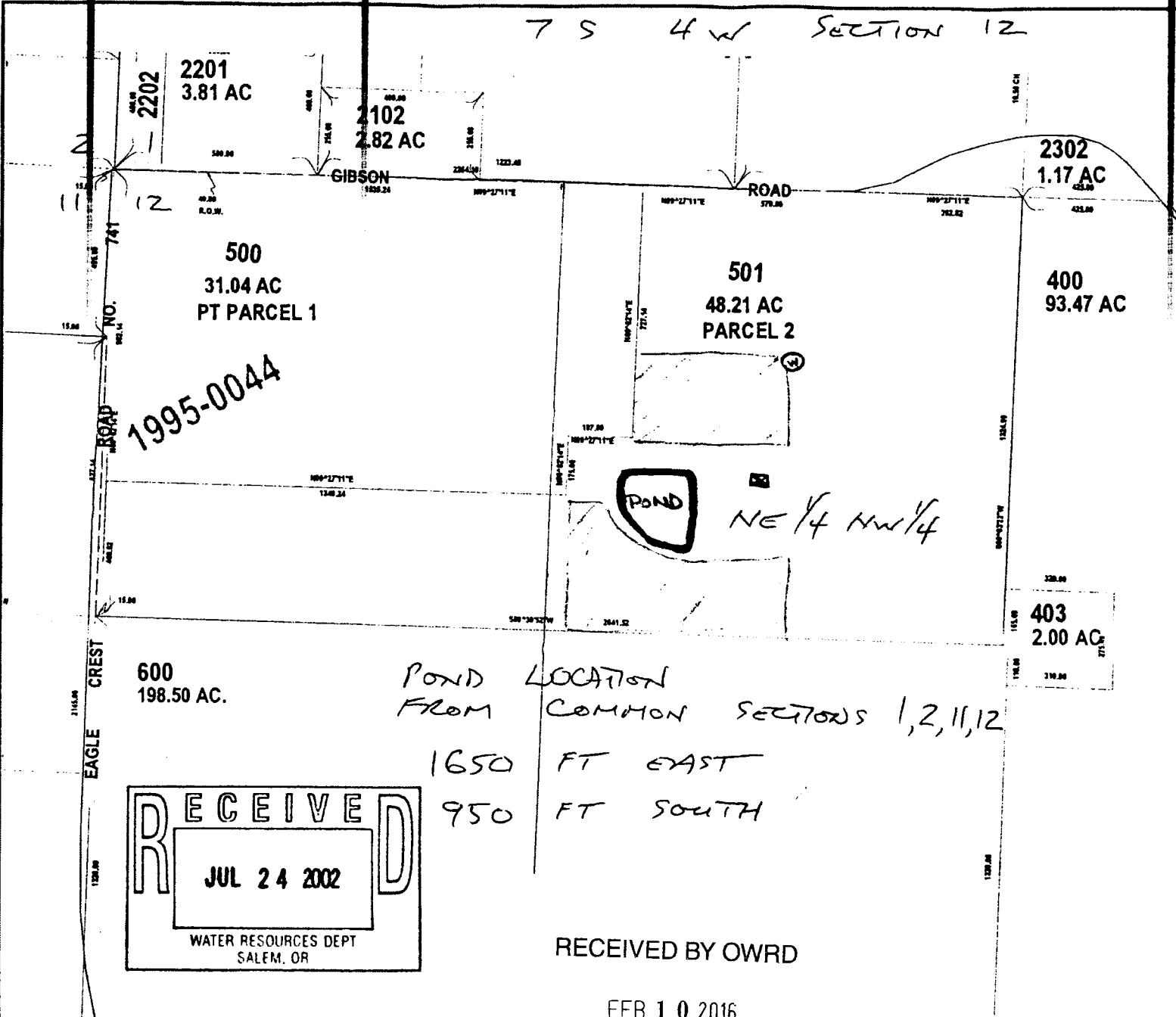


7 S 4 W SECTION 12

Polk County Map
Community Development



- Roads**
- OTHER
 - CO-GRAVL
 - STATEHWY
 - CO-PAVED
- Section**
- 1
 - 5
- Taxlot**
- Taxlot Arrows
 - Taxlot Boundary
- TaxMap**
- TaxMap Line
 - 22
 - 24
 - 26
 - 32
 - 33
 - 34
 - 8
 - 47
 - TaxMap Sub Line
 - TaxMapAr

- well
- pond
- drip irrigation
- site for future orchards that may need drip irrigation to get plants started.
- Barn to water animals

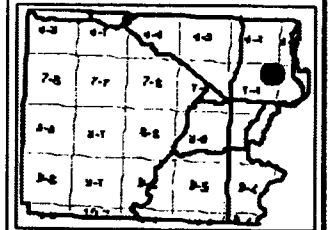
RECEIVED
 JUL 24 2002
 WATER RESOURCES DEPT
 SALEM, OR

POND LOCATION
FROM COMMON SECTIONS 1, 2, 11, 12
1650 FT EAST
950 FT SOUTH

RECEIVED BY OWRD

FEB 10 2016

R-85244



This map was produced using the Polk County GIS data. The GIS data is maintained by the county to support its governmental activities. The county is not responsible for map errors, omissions, misuse or misinterpretation.

1 in. = 400 ft.

SALEM, OR