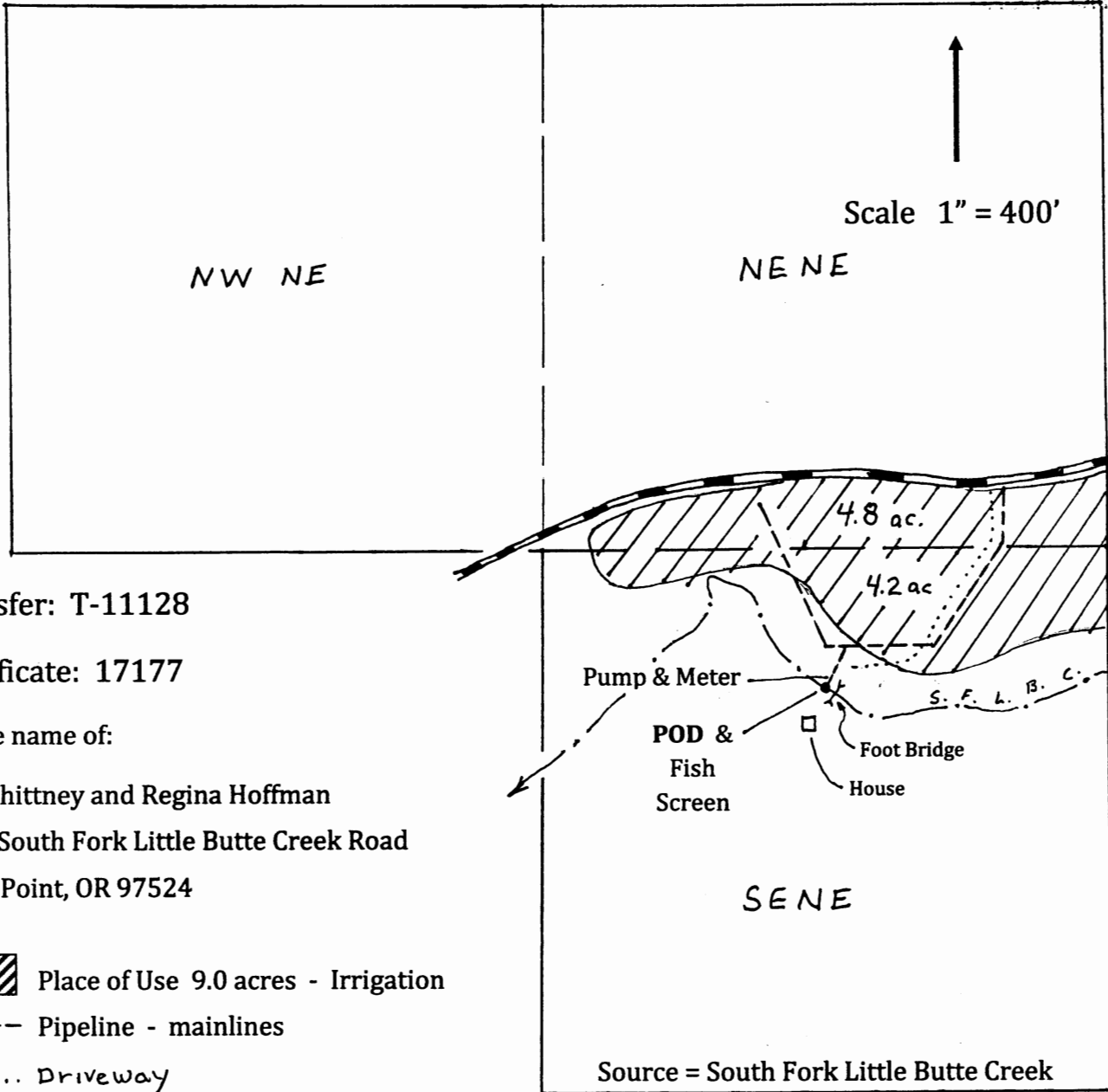


CLAIM OF BENEFICIAL USE MAP

T. 37 S., R. 2 E., Section 13, Taxlot 4500







Transfer: T-11128

Certificate: 17177

In the name of:

Pat Whitney and Regina Hoffman
 9500 South Fork Little Butte Creek Road
 Eagle Point, OR 97524

-  Place of Use 9.0 acres - Irrigation
-  Pipeline - mainlines
-  Driveway
-  County Road

Source = South Fork Little Butte Creek

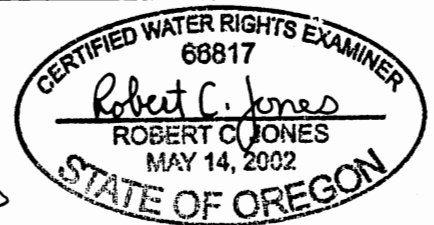
POD is located ¹⁷⁸⁴1000 feet North and ⁶⁰⁰1150 feet West of ^{NE}SE Corner of Section ²⁶13.

GPS coordinates are: 42° 55' 43.11" N & 122° 25' 23.24" W

This map revised by WRD to correctly identify measured distance of POD. 5-19-10 LJOE/WRD

Base Map is Jackson County GIS taxlots over 2005 Aerial photos & Google aerial photos overlay for assumed best fit.

NOTE: This map is for water rights purposes, not for property boundary locations.



RENEWAL DATE: 6/30/2013

Map by Bob Jones on September 24, 2012