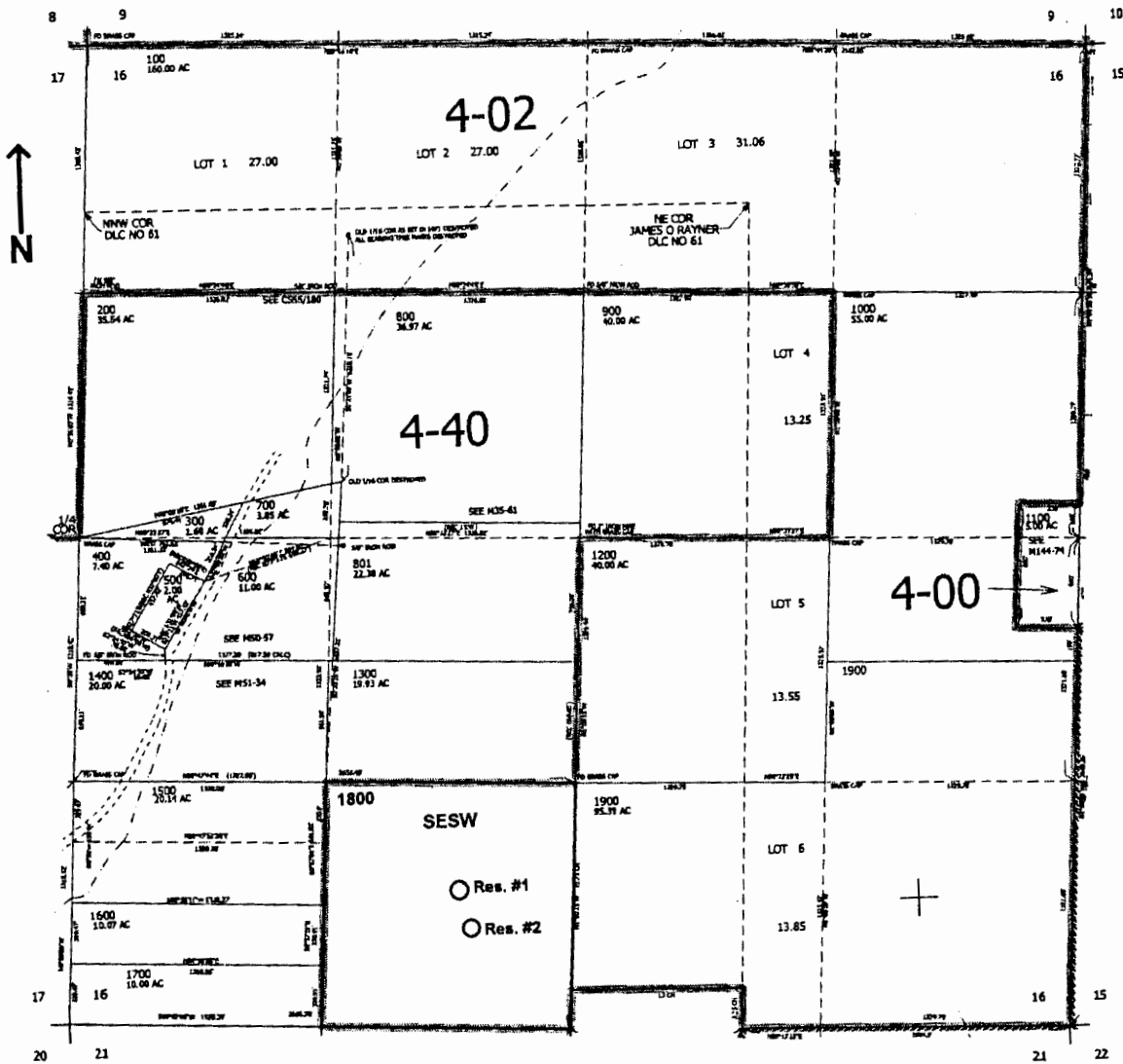


SEC.16 T.26S. R.6W. W.M.
DOUGLAS COUNTY
Scale: 1" = 1000'



Res. #1- 750 ft. N. and 600 ft. W.)
 from the S1/4 corner of Sec. 16
 Res. #2- 530 ft. N. and 530 ft. W.)

RECEIVED BY OWRD

APR 17 2015

SALEM, OR

RECEIVED

NOV 20 2008

WATER RESOURCES DEPT
SALEM, OREGON

RECEIVED BY OWRD

MAY 15 2015

SALEM, OR

App No R 87345 Permit No R 14743