

township
19S

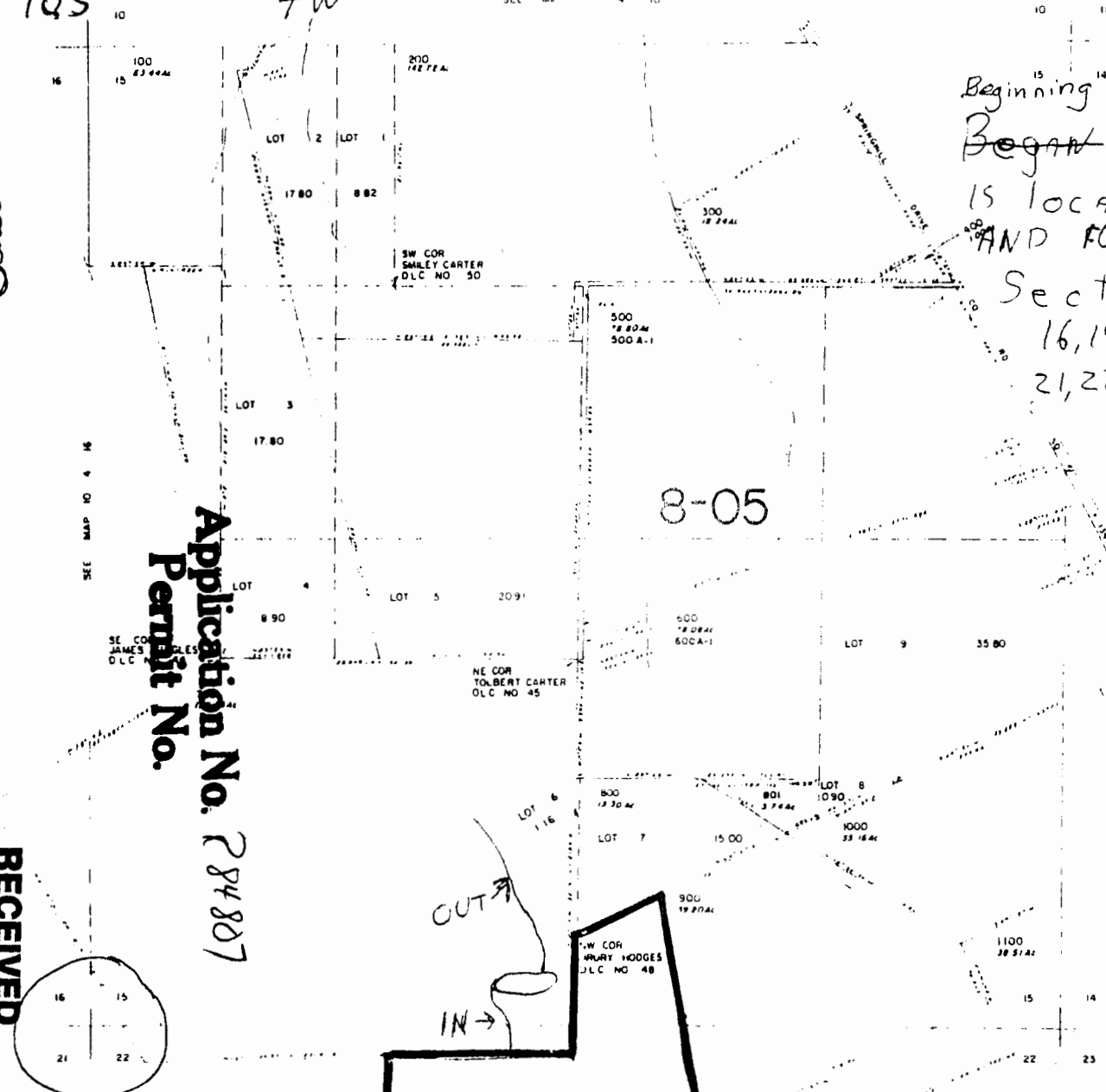
Range
4W

Section
15

quarter/quarter
SW

tax lot NO.
700

Scale
1" = 800' A



Beginning
Begin of Pond 1
is located 2250'E
AND 400'N from
Section Corner
16, 15
21, 22

Application No. 284887
Permit No.

RECEIVED
JUL 02 2001
WATER RESOURCES DEPT.
SALEM, OREGON

RECEIVED
JUL 17 2001
WATER RESOURCES DEPT.
SALEM, OREGON

RECEIVED BY OWRD

JUN 03 2015
SALEM, OR