

RECEIVED BY OWRD

JUN 01 2015

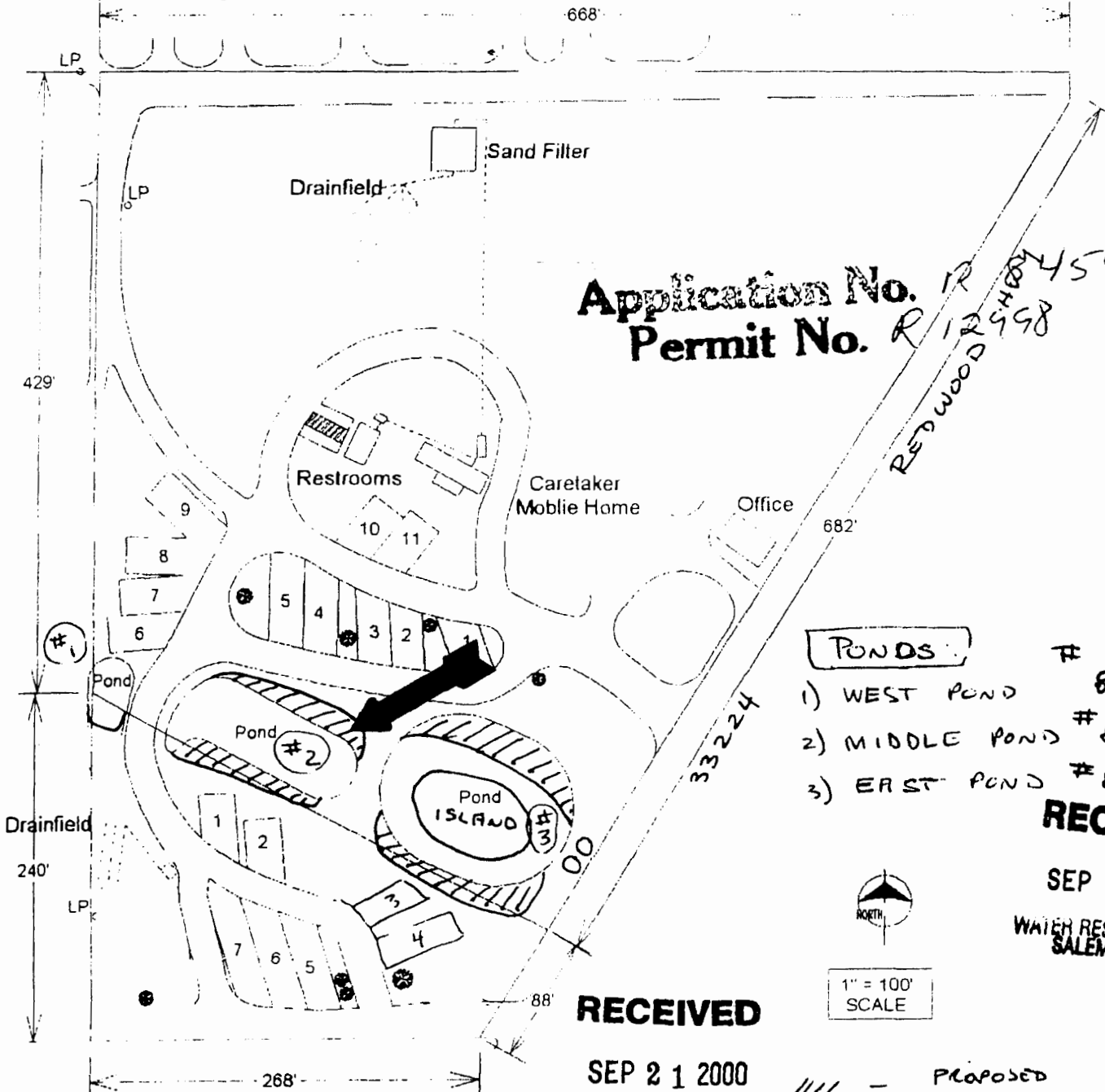
SALEM, OR

CONCEPT MAP

FOR PONDS

Application No. *R-84548*
Permit No.

40-9-25-10
TL 1601, 1602



Application No.
Permit No. *R-84548*

PONDS:

- | | |
|----------------|---------|
| 1) WEST POND | # 84527 |
| 2) MIDDLE POND | # 84548 |
| 3) EAST POND | # 84526 |

RECEIVED

SEP 08 2000

WATER RESOURCES DEPT.
SALEM, OREGON

RECEIVED

SEP 21 2000

WATER RESOURCES DEPT.
SALEM, OREGON

//// - PROPOSED
REMOVAL

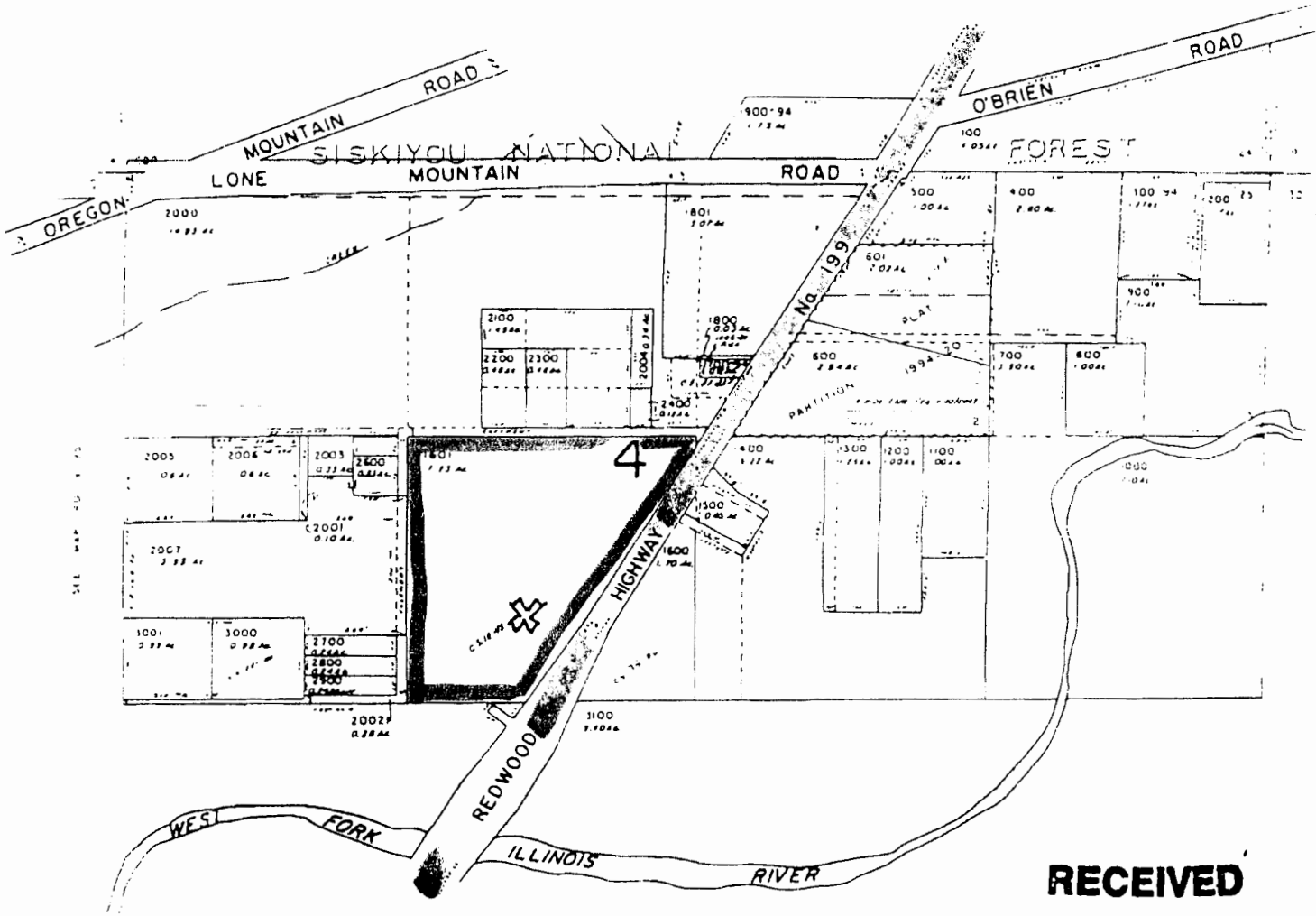
RECEIVED BY OWRD

JUN 01 2015

SALEM, OR

SEE MAP 40 9 21

used by
a copy.



SEE MAP 40 9 21

RECEIVED

SEP 08 2000

WATER RESOURCES DEPT.
SALEM, OREGON

RECEIVED

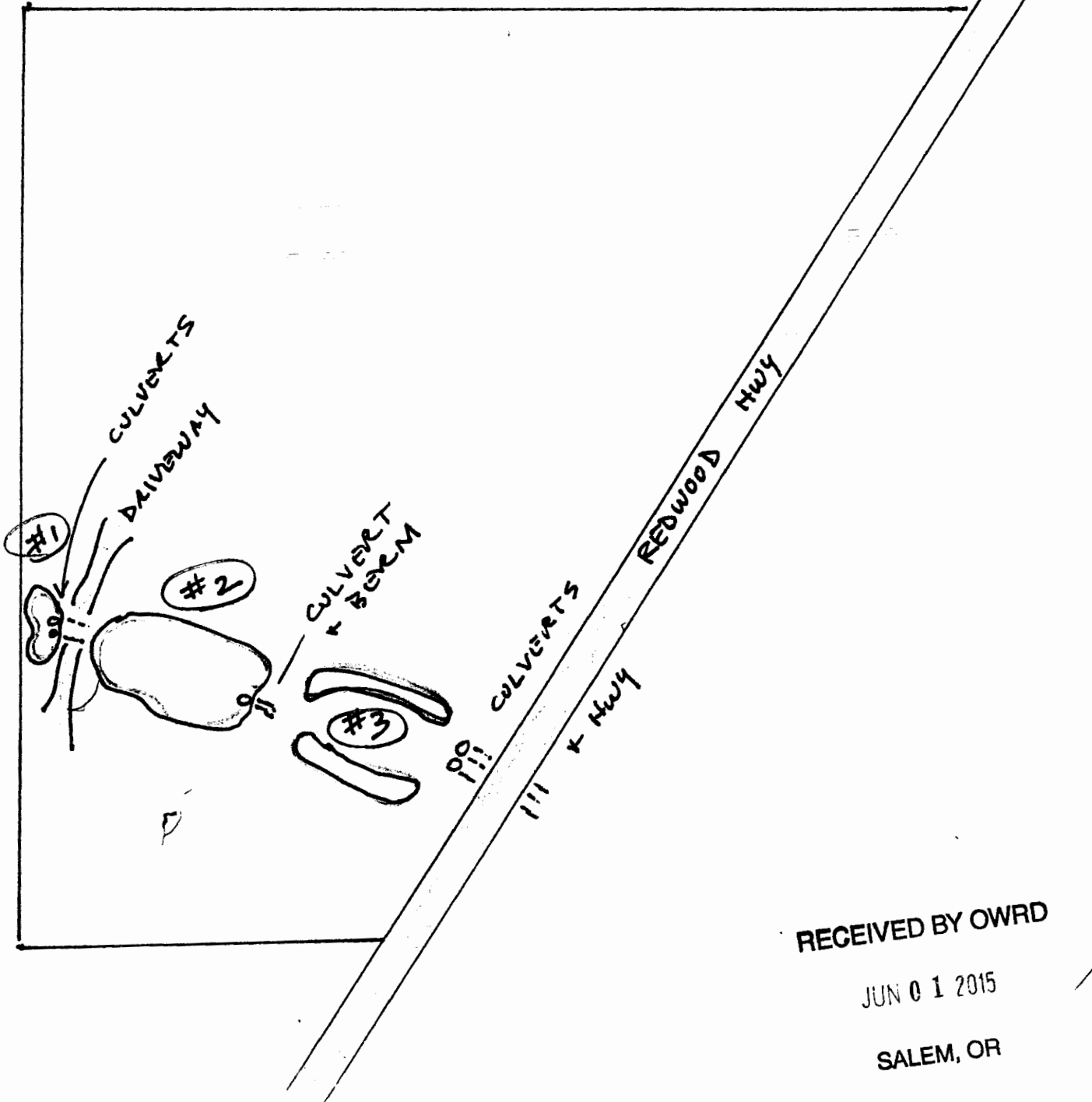
SEP 21 2000

WATER RESOURCES DEPT.
SALEM, OREGON

40-9-25-10

Application No. B-84548
Permit No. R-12098

40-9-25-10
T2 1601, 1602



RECEIVED BY OWRD

JUN 01 2015

SALEM, OR