

RECEIVED BY OWRD

JUN 01 2015

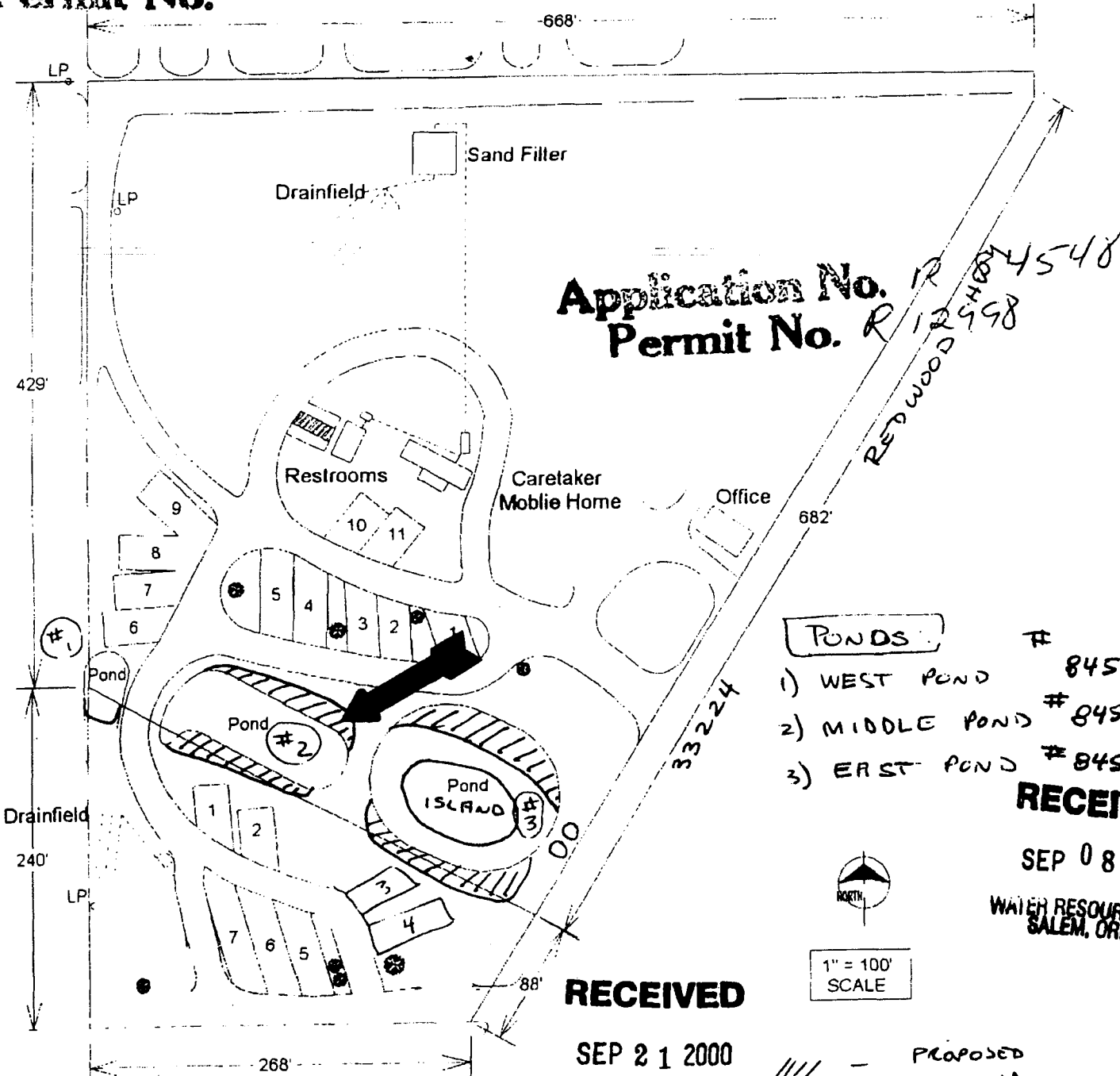
SALEM, OR

CONCEPT MAP

FOR PONDS

Application No. *R-84548*
Permit No.

40-9-25-10
TL 1601, 1602



Application No. *R-12998*
Permit No. *R-12998*

- PONDS:**
- 1) WEST POND # 84527
 - 2) MIDDLE POND # 84548
 - 3) EAST POND # 84526

RECEIVED

SEP 08 2000

WATER RESOURCES DEPT.
SALEM, OREGON

RECEIVED

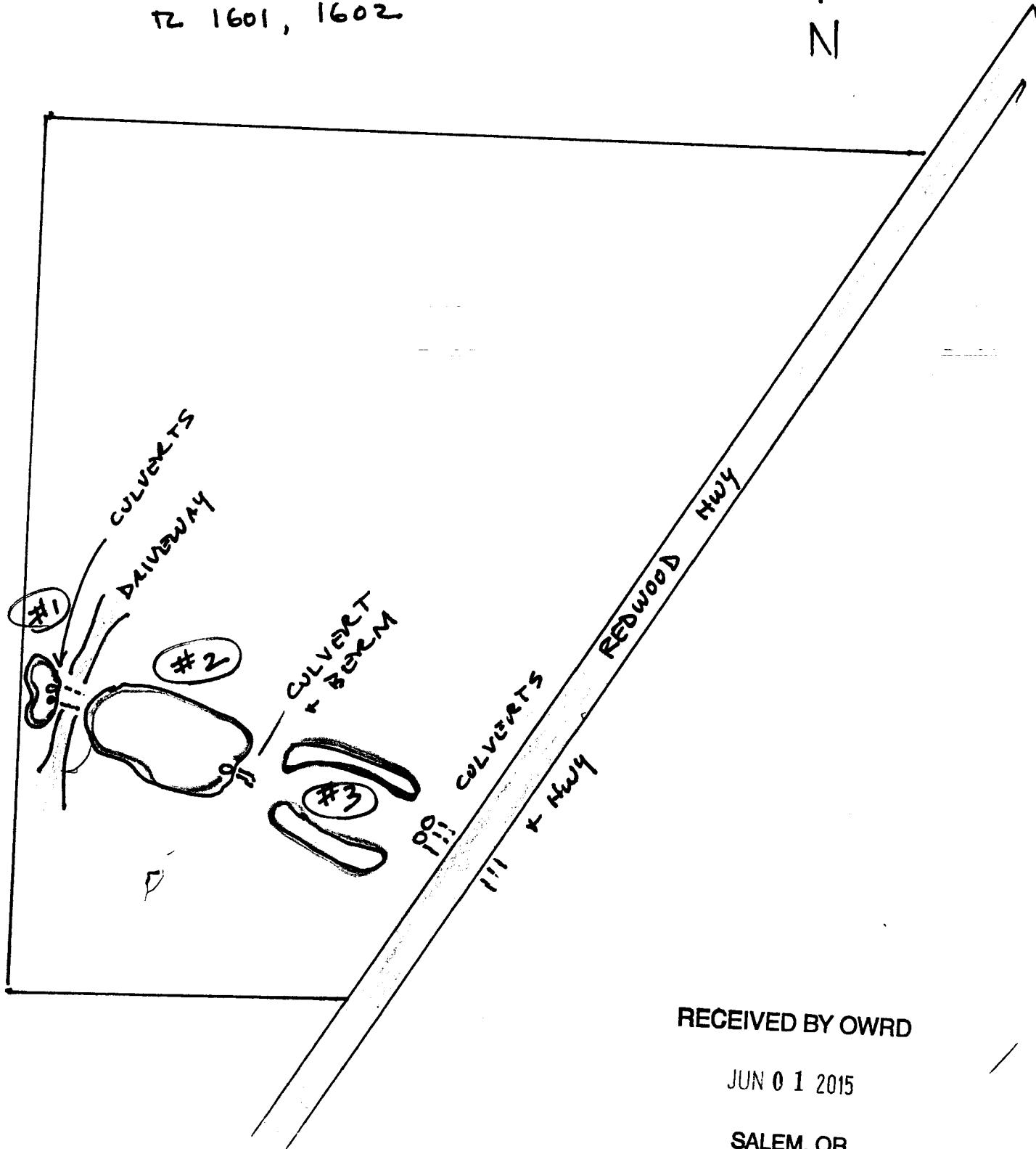
SEP 21 2000

WATER RESOURCES DEPT.
SALEM, OREGON

//// - PROPOSED
REMOVAL

40-9-25-10

TZ 1601, 1602



RECEIVED BY OWRD

JUN 01 2015

SALEM, OR

HK 22

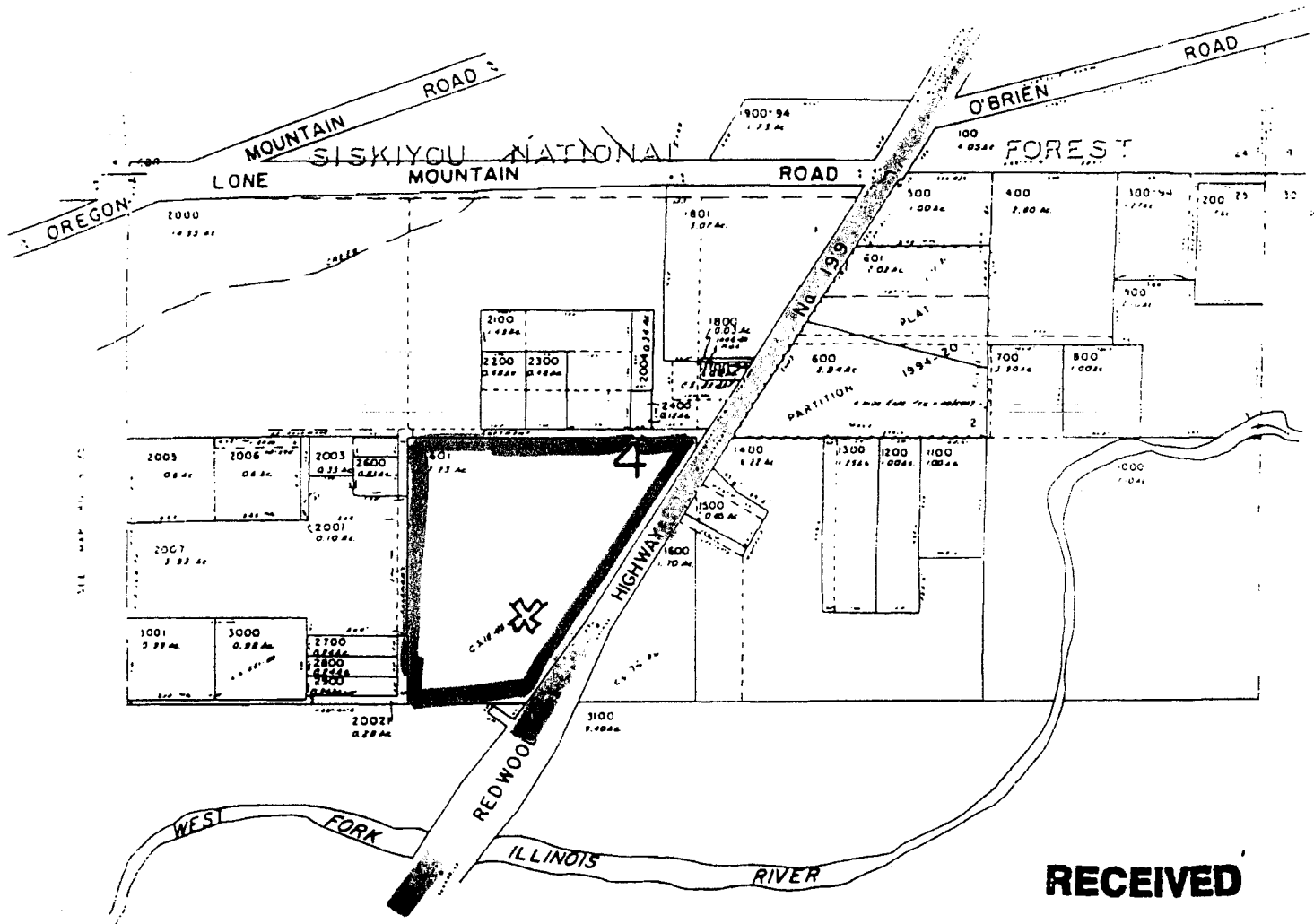
NE1/4 SEC. 25 T40S. R.9W. W.M
JOSEPHINE COUNTY

RECEIVED BY OWRD 40 9 25

JUN 0 1 2015

SALEM, OR

SEE MAP 40 9 24



SEE MAP 40 9 25

RECEIVED

SEP 0 8 2000

WATER RESOURCES DEPT.
SALEM, OREGON

RECEIVED

SEP 2 1 2000

WATER RESOURCES DEPT.
SALEM, OREGON

40 9 25

40-9-25-10

Application No. *R-84548*
Permit No. *R-12498*