

FINAL PROOF SURVEY
UNDER
APPLICATION T-6863
PERMIT SPECIAL ORDER VOL 67, PG 449

IN NAME OF
LUCE-LONG DITCH COMPANY

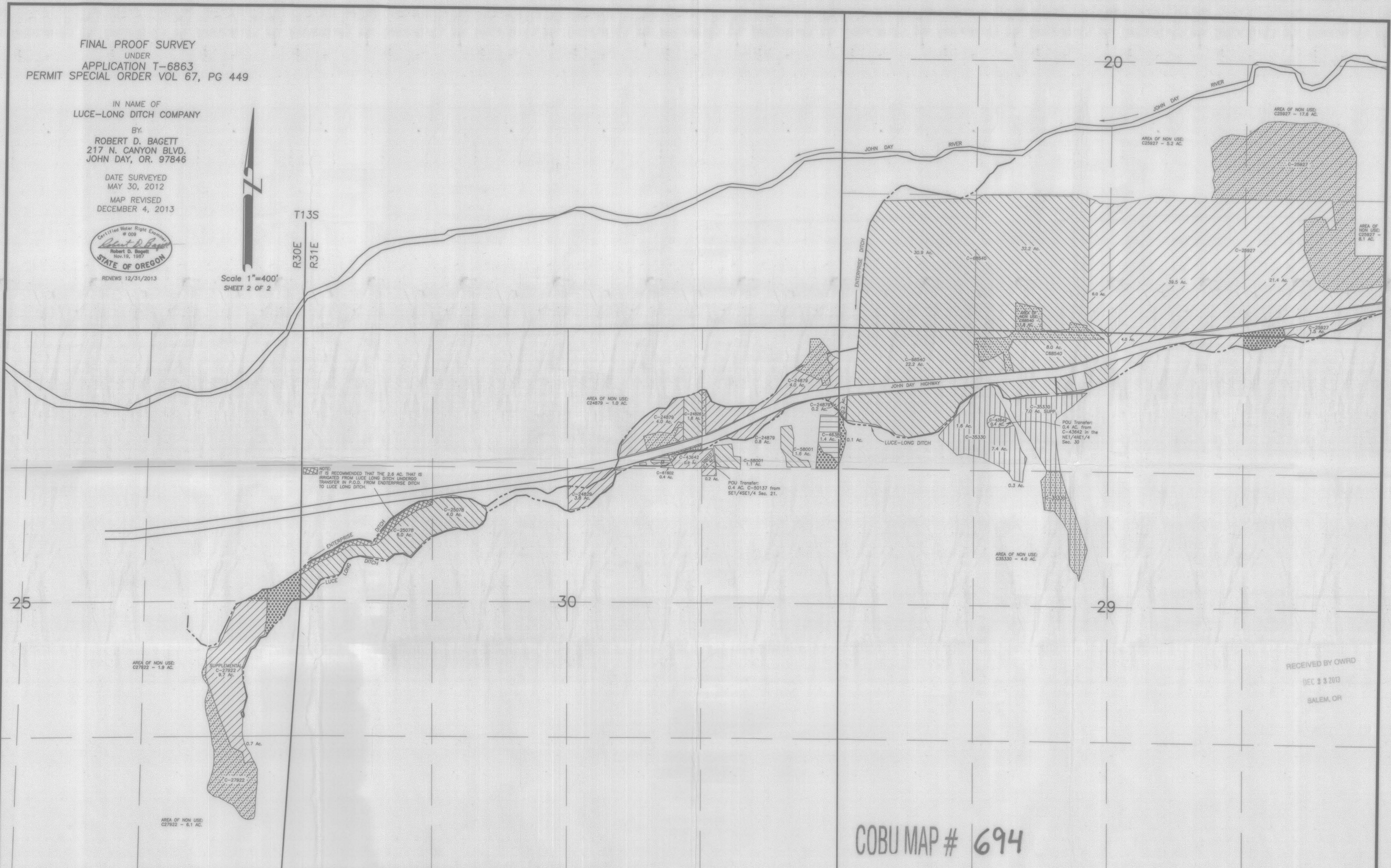
BY
ROBERT D. BAGETT
217 N. CANYON BLVD.
JOHN DAY, OR. 97846

DATE SURVEYED
MAY 30, 2012
MAP REVISED
DECEMBER 4, 2013



Scale 1"=400'
SHEET 2 OF 2

T13S
R30E
R31E



NOTE:
IT IS RECOMMENDED THAT THE 2.6 AC. THAT IS
BRACKETED FROM LUCE LONG DITCH UNDERGO
TRANSFER IN P.O.D. FROM ENTERPRISE DITCH
TO LUCE LONG DITCH.

POU Transfer:
0.4 AC. C-50137 from
SE1/4SE1/4 Sec. 21.

POU Transfer:
0.4 AC. from
C-43642 in the
NE1/4SE1/4
Sec. 30

AREA OF NON USE:
C27922 - 1.9 AC.

AREA OF NON USE:
C27922 - 6.1 AC.

AREA OF NON USE:
C24879 - 1.0 AC.

AREA OF NON USE:
C25927 - 5.2 AC.

AREA OF NON USE:
C25927 - 17.6 AC.

AREA OF NON USE:
C25927 - 8.1 AC.

AREA OF NON USE:
C35330 - 4.0 AC.

RECEIVED BY OWRD
DEC 23 2013
SALEM, OR

COBU MAP # 694

T-6863