

FINAL PROOF SURVEY  
UNDER  
APPLICATION T-6863  
PERMIT SPECIAL ORDER VOL 67, PG 449

IN NAME OF  
LUCE-LONG DITCH COMPANY

BY  
ROBERT D. BAGETT  
217 N. CANYON BLVD.  
JOHN DAY, OR. 97846

DATE SURVEYED  
MAY 30, 2012  
MAP REVISED  
DECEMBER 4, 2013



RENEWS 12/31/2013

Scale 1"=400'  
SHEET 2 OF 2

T13S

R30E  
R31E

25

30

29

20

AREA OF NON USE  
C27922 - 1.9 AC.

AREA OF NON USE  
C27922 - 6.1 AC.

AREA OF NON USE  
C24879 - 1.0 AC.

AREA OF NON USE  
C25927 - 5.2 AC.

AREA OF NON USE  
C25927 - 17.6 AC.

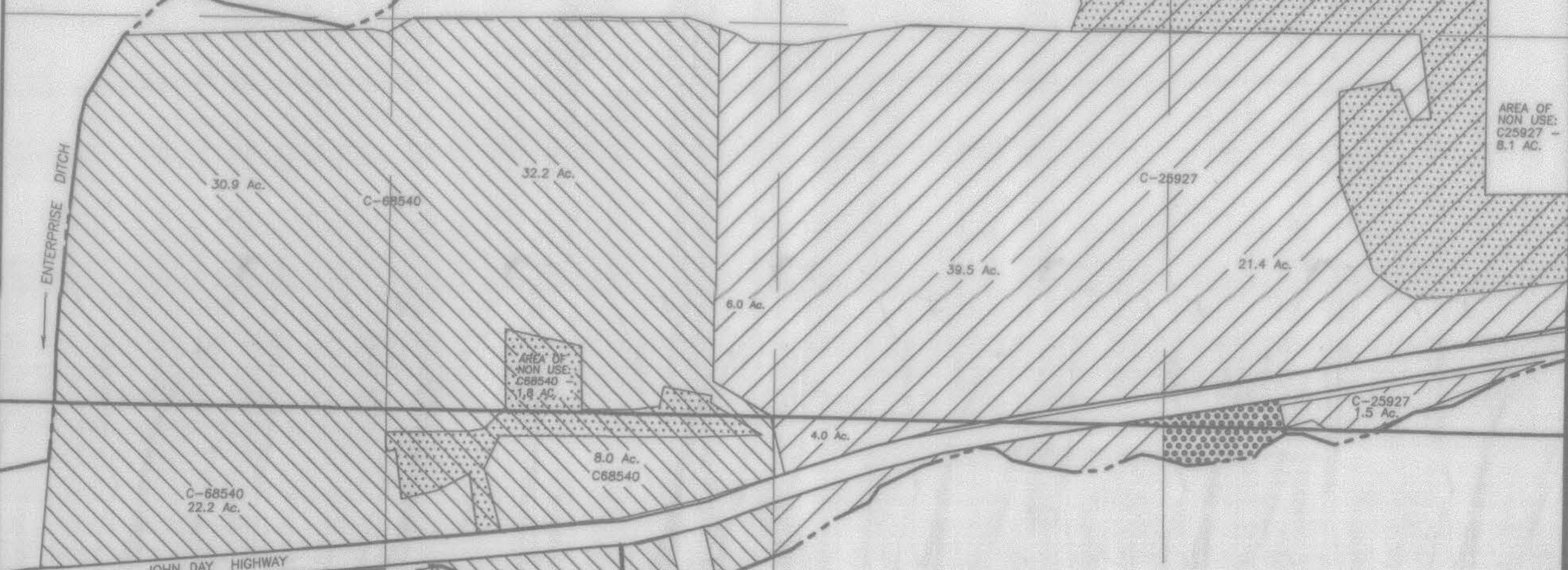
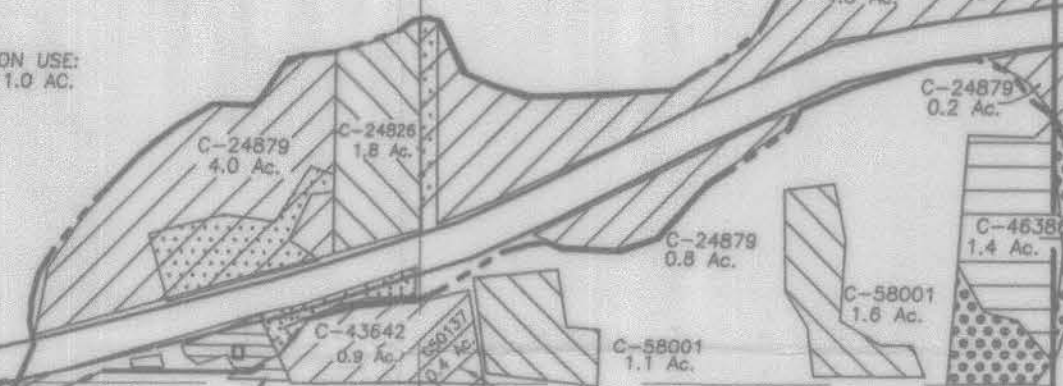
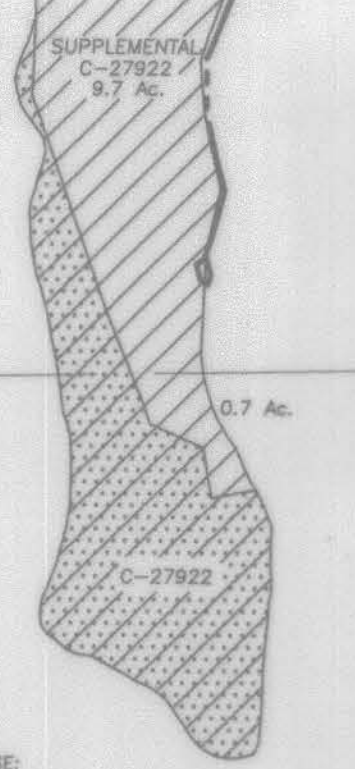
AREA OF NON USE  
C25927 - 8.1 AC.

AREA OF NON USE  
C35330 - 4.0 AC.

NOTE:  
IT IS RECOMMENDED THAT THE 2.6 AC. THAT IS  
BRACKETED FROM LUCE LONG DITCH UNDERGO  
TRANSFER IN P.O.D. FROM ENTERPRISE DITCH  
TO LUCE LONG DITCH.

POU Transfer:  
0.4 AC. C-50137 from  
SE1/4SE1/4 Sec. 21.

POU Transfer:  
0.4 AC. from  
C-43642 in the  
NE1/4SE1/4  
Sec. 30



RECEIVED BY OWRD  
DEC 23 2013  
SALEM, OR

COBU MAP # 694

T-6863