

100 R-84353
R-84353

RECEIVED
MAR - 1 2000
WATER RESOURCES DEPT
SALEM, OR

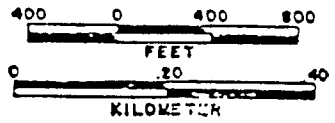
RECEIVED BY OWRD

FEB 20 2015

SALEM, OR

SEE MAP NO 862

SCALE 1:9600



SCALE 1"=800' POND #2

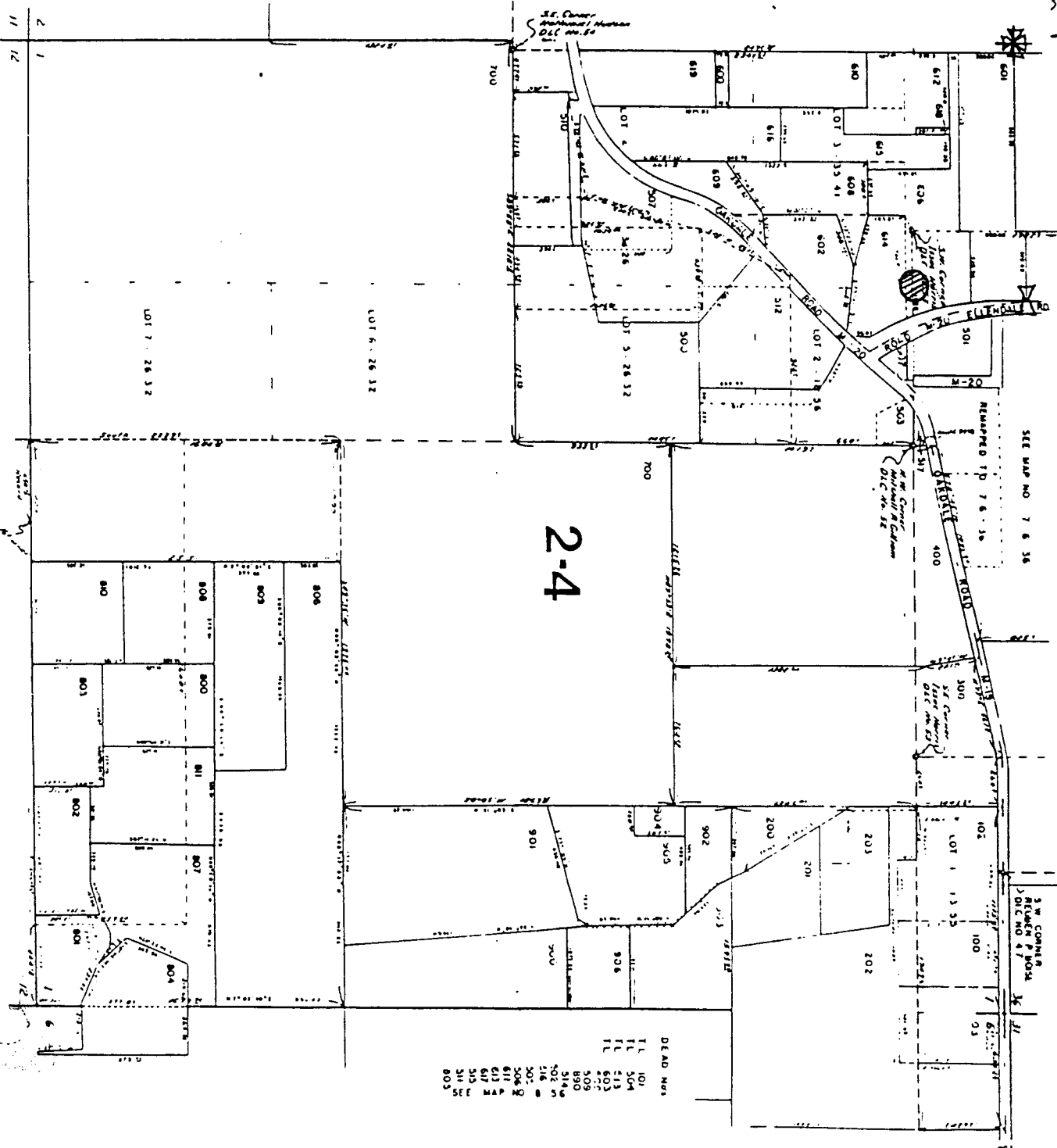
P.O.D Located 540'S + 1160' E of NW Corner + section 1

SEC. 1 T8SR6WWM
POLK COUNTY

SCALE 1"=400'

Proposed place of use
 Proposed place of use
 section corner
 quarter corner

861



DEAD NPS

TL	101
TL	104
TL	113
TL	114
TL	115
TL	116
TL	117
TL	118
TL	119
TL	120
TL	121
TL	122
TL	123
TL	124
TL	125
TL	126
TL	127
TL	128
TL	129
TL	130
TL	131
TL	132
TL	133
TL	134
TL	135
TL	136
TL	137
TL	138
TL	139
TL	140
TL	141
TL	142
TL	143
TL	144
TL	145
TL	146
TL	147
TL	148
TL	149
TL	150
TL	151
TL	152
TL	153
TL	154
TL	155
TL	156
TL	157
TL	158
TL	159
TL	160
TL	161
TL	162
TL	163
TL	164
TL	165
TL	166
TL	167
TL	168
TL	169
TL	170
TL	171
TL	172
TL	173
TL	174
TL	175
TL	176
TL	177
TL	178
TL	179
TL	180
TL	181
TL	182
TL	183
TL	184
TL	185
TL	186
TL	187
TL	188
TL	189
TL	190
TL	191
TL	192
TL	193
TL	194
TL	195
TL	196
TL	197
TL	198
TL	199
TL	200

Application # updated by Dept. *mfb*/wrd 5-24-16 / Measured distance directional updated to 1160 Feet East. *mfb*