

SECTION 14 T.124S. R.8W. W.M.  
BENTON COUNTY

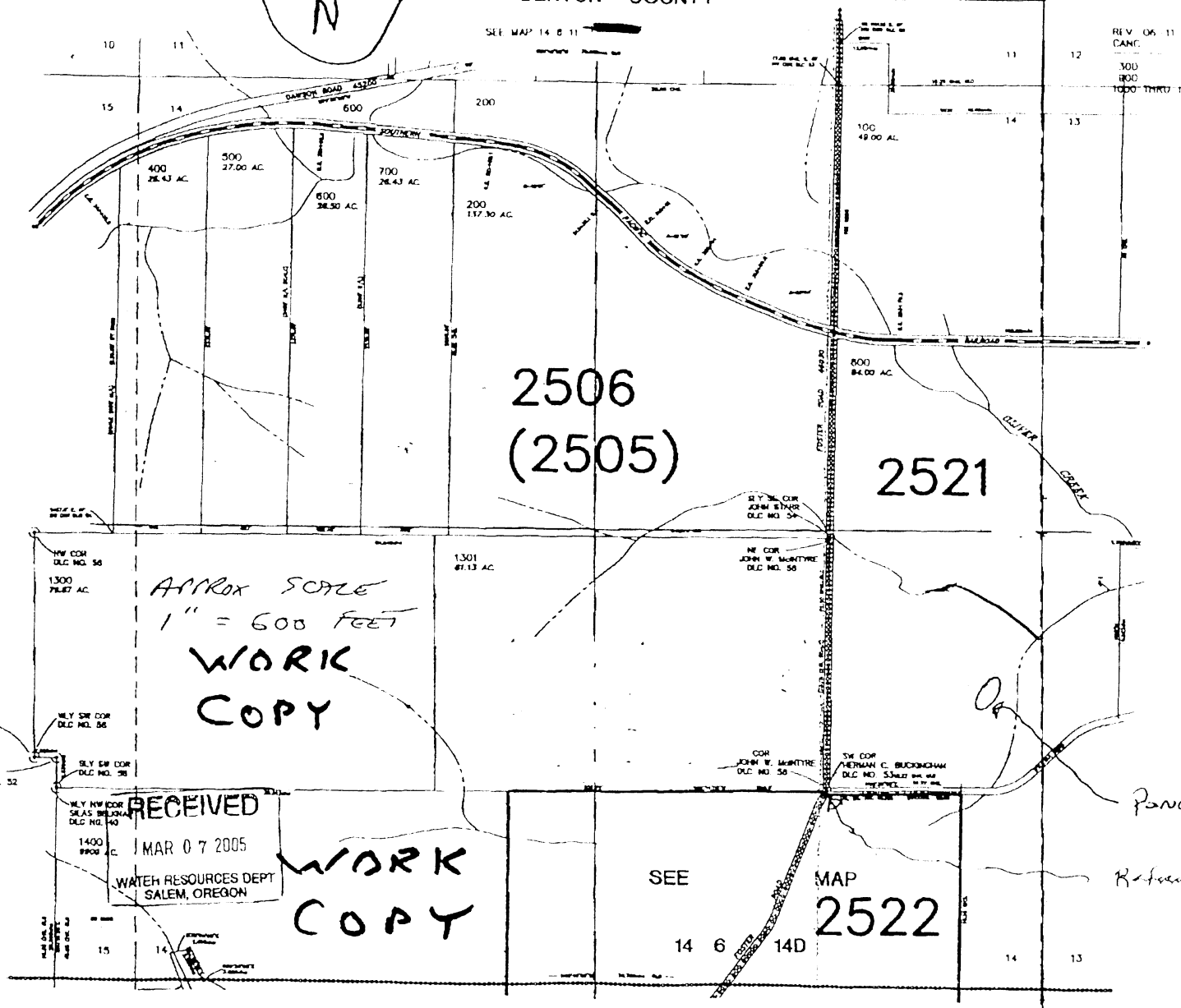
14 6

THIS MAP WAS PREPARED FOR  
ASSESSMENT PURPOSES ONLY

REV. 06 11  
CANC.  
300  
300  
1000 THRU 1

297 \* 11/16/11

SEE MAP 14 6 11



Pond Located from  
Section 14  
1700 ft North  
320 ft West

TAX Lot #1

Pond Location - 1050' - N X  
From Reference Poi

Pond Location - N 44° 21.04',  
W 123° 22.343

Reference Point S 1/4 corner of Prop.  
N 44° 20.957',  
W 123° 22.358

RECEIVED  
MAR 07 2005  
WATER RESOURCES DEPT  
SALEM, OREGON

WORK  
COPY

SEE  
MAP  
2522

RECEIVED BY OWRD

AUG 27 2015

SALEM, OR