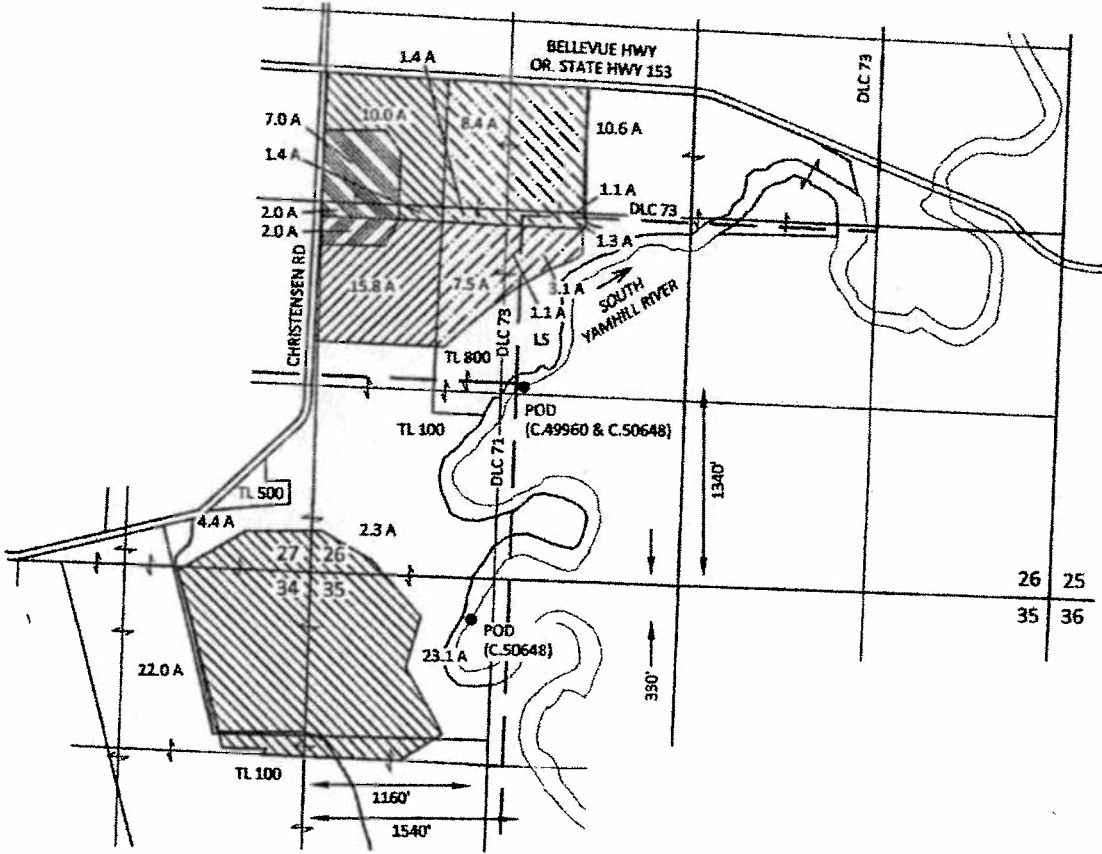



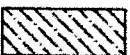



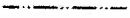


Sections 26, 27, 34 & 35, T5S, R5W, W.M., Yamhill County

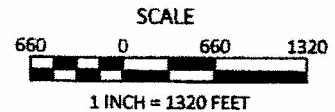
REQUEST FOR REVERSIONS IN T-11478
Christensen Farms LLC



EXPLANATION

- | | | | |
|---|---|---|---|
|  | CANCELED CERTIFICATE 49960
CHRISTENSEN FARMS LLC OWNED LANDS
15.8 ACRES
PRIORITY: 7/6/1976 |  | CANCELED CERTIFICATE 50648
CHRISTENSEN FARMS LLC OWNED LANDS
63.2 ACRES
PRIORITY: 5/4/1977 |
|  | CANCELED CERTIFICATE 49960
LANDS OWNED BY OTHERS
11.7 ACRES
PRIORITY: 7/6/1976 |  | CANCELED CERTIFICATE 50648
LANDS OWNED BY OTHERS
22.8 ACRES
PRIORITY: 5/4/1977 |
|  | CANCELED CERTIFICATE 49960
CHRISTENSEN FARMS LLC OWNED LANDS
SOLAR PANEL USE
2.0 ACRES
PRIORITY: 7/6/1976 |  | CANCELED CERTIFICATE 50648
CHRISTENSEN FARMS LLC OWNED LANDS
SOLAR PANEL USE
9.0 ACRES
PRIORITY: 5/4/1977 |
|  | POINT OF DIVERSION (POD) |  | PIPELINE (APPROX.) |

DRAFT



August 16, 2016

This map is not intended to provide legal dimensions or locations of property ownership lines

FIGURE 1

1626 VICTORIAN WAY
EUGENE, OR 97401
(503) 319-8926