

MAP 3: ROADS AND DRAINAGE

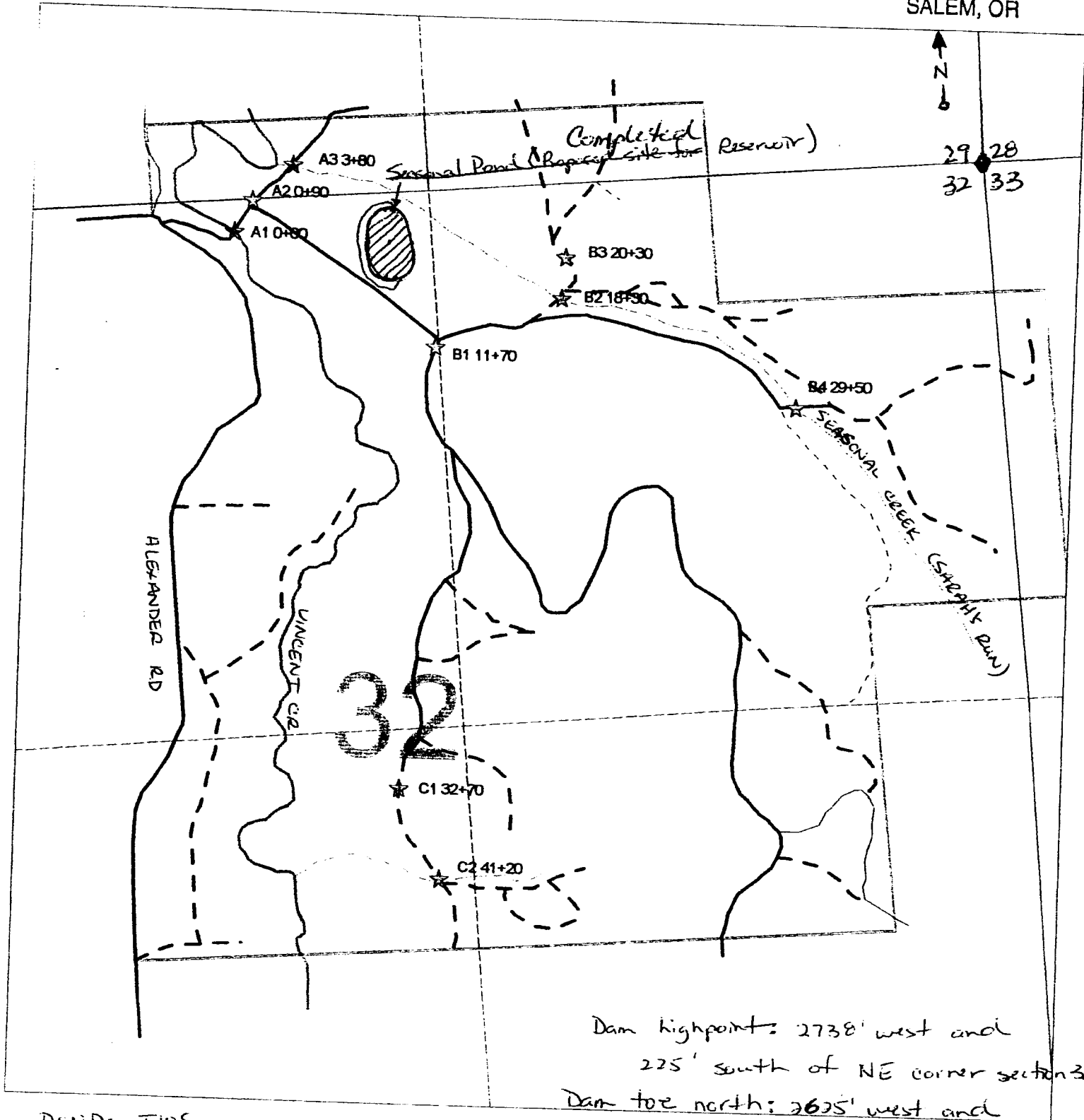
RECEIVED BY OWRD

EHLERS TRACT
 Sections 29, 32 & 33
 T10S, R6W, Benton Co.
 Map Scale: 1" = 600' 500'

- Surfaced roads
- - - Unsurfaced roads
- ☆ Stream crossing structure
- ☆ Drainage structure

JUN 17 2015

SALEM, OR



Dam highpoint: 2738' west and
 225' south of NE corner section 32
 Dam toe north: 2625' west and
 75' south of NE corner section 32
 Dam toe south: 2625' west and
 375' south of NE corner section 32

POND: T10S
 ROW
 S 32
 NE 1/4 NW 1/4
 Tax lot (#100) = 102