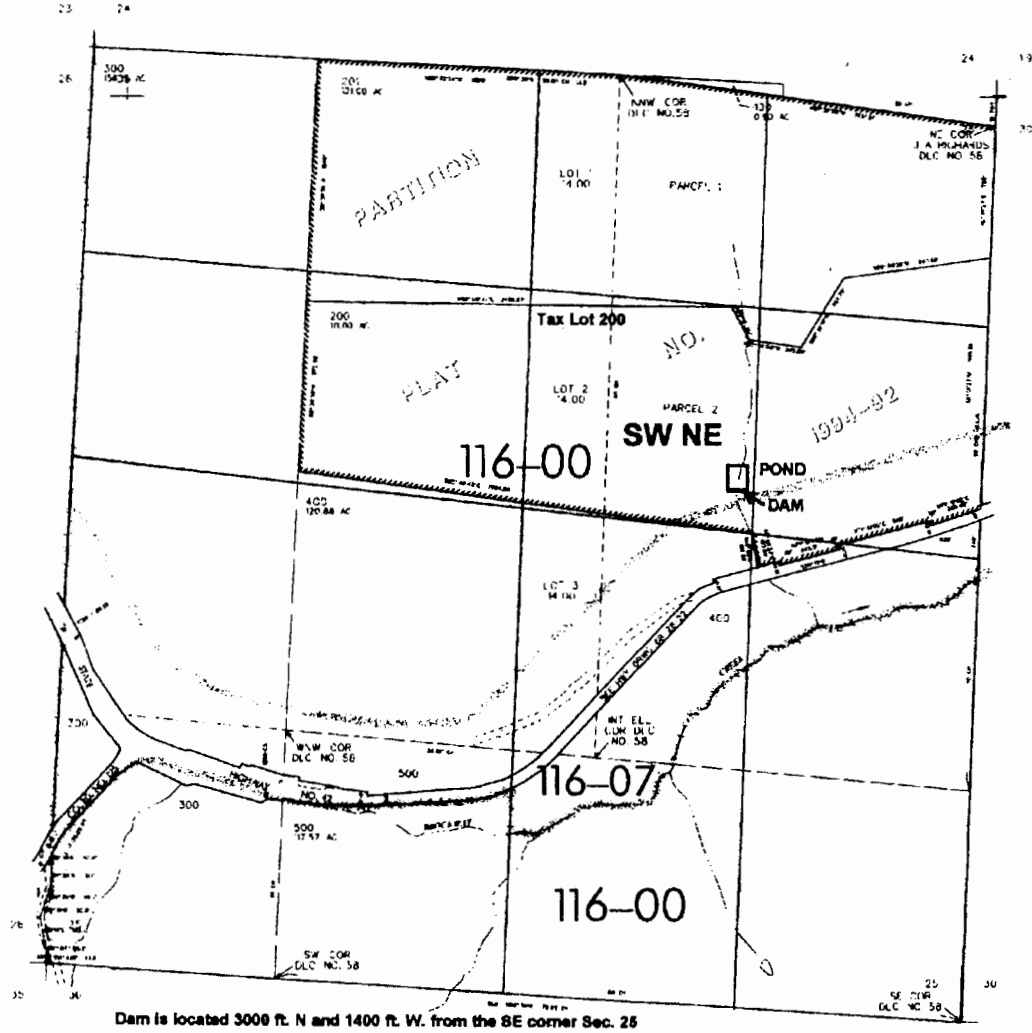


Person Point + Little Ranch

SEC. 25 T.28S. R. 7W W.M.
DOUGLAS COUNTY

Scale: 1" = 1000'



RECEIVED BY OWRD

SEP 14 2015

SALEM, OR

RECEIVED
 AUG 23 2002
 WATER RESOURCES DEPT
 SALEM, OREGON

Application No. R-85276
 Permit No. R-13466