

1) (T) (R) (S) HANDLING

8928 OLD STAGE RD
CENTRAL POINT, OR 97502

T 36S R 3W S 35

1" = 400'

POND IS LOCATED APPROX:

1120 FEET SOUTH OF NW SECTION CORNER
AND 350 FEET EAST OF WEST SECTION LINE

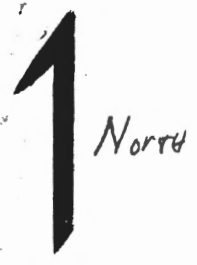
DAM IS LOCATED APPROX:

1080 FEET SOUTH OF NW SECTION CORNER
AND 350 FEET EAST OF WEST SECTION LINE

RECEIVED

APR 01 2002

WATER RESOURCES DEPT.
SALEM, OREGON

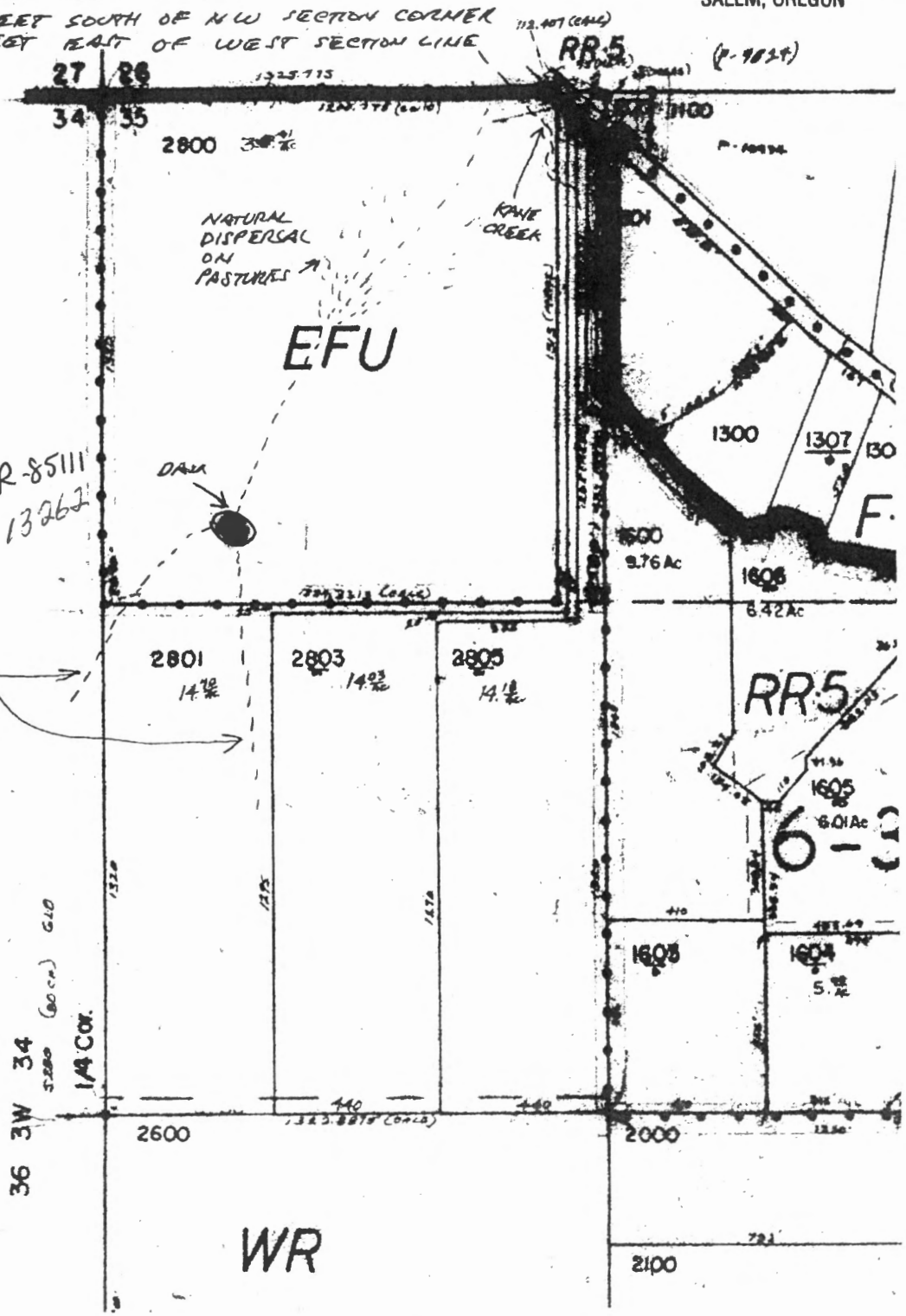


Application No. R-85111
Permit No. R-13262

UNNAMED
SEASONAL
TRIBUTARIES

NOTE:

DAM HAS 4-8"
OVERFLOW PIPES
AND SPILLWAY ON
VIRGIN GROUND



RECEIVED BY OWRD

AUG 24 2015

SALEM, OR

WR