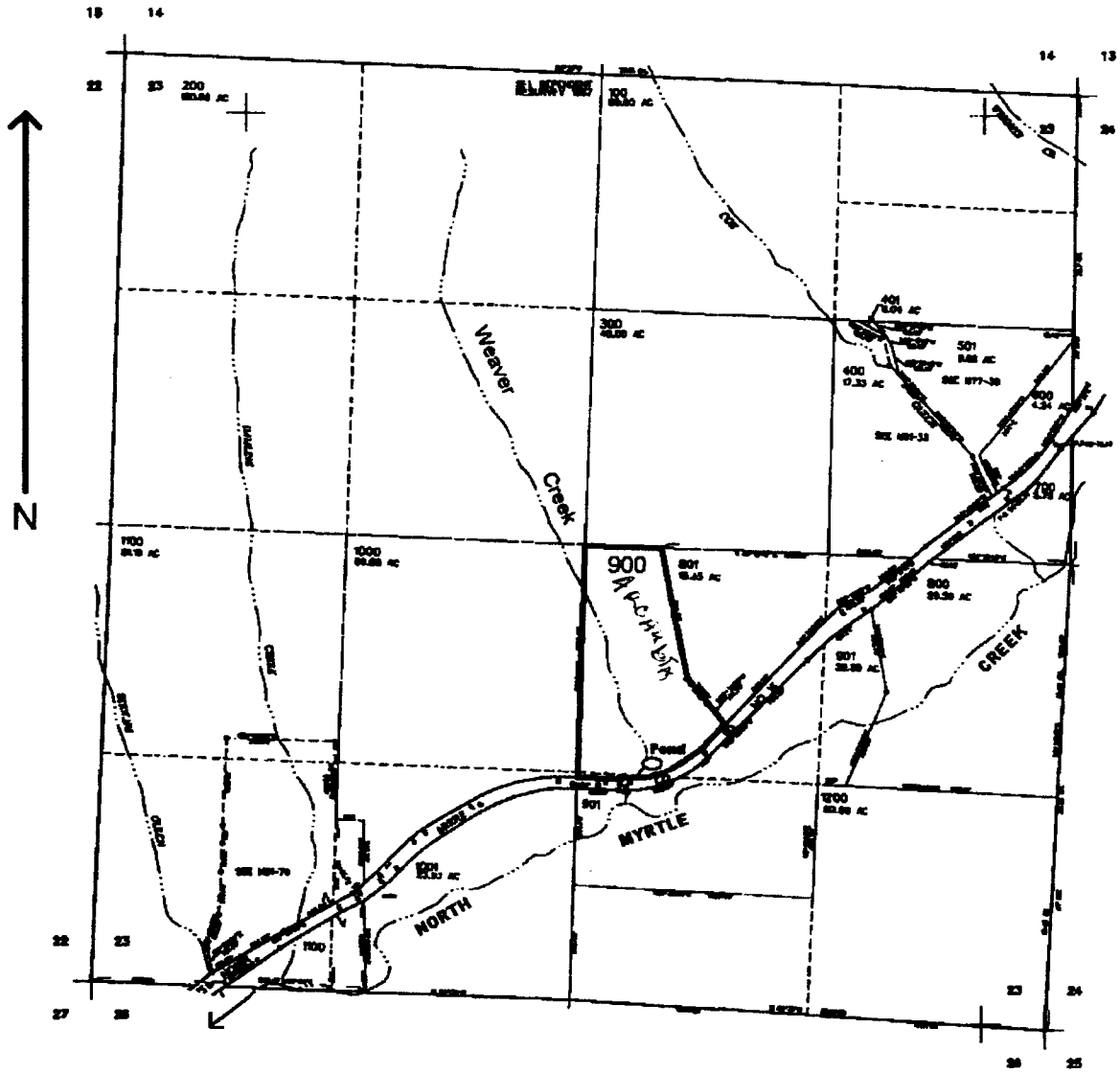


RECEIVED
JUN 02 2003
WATER RESOURCES DEPT.
SALEM, OREGON

SEC. 23 T.28S. R.4 W. W.M.
DOUGLAS COUNTY
Scale: 1" = 1000'



Dam located 1300 ft. N. and 350 ft. E. from the S. 1/4 corner of Sec. 23

app no R-85627
Permit no R.13737

RECEIVED BY OWRD
SEP 22 2015
SALEM, OR