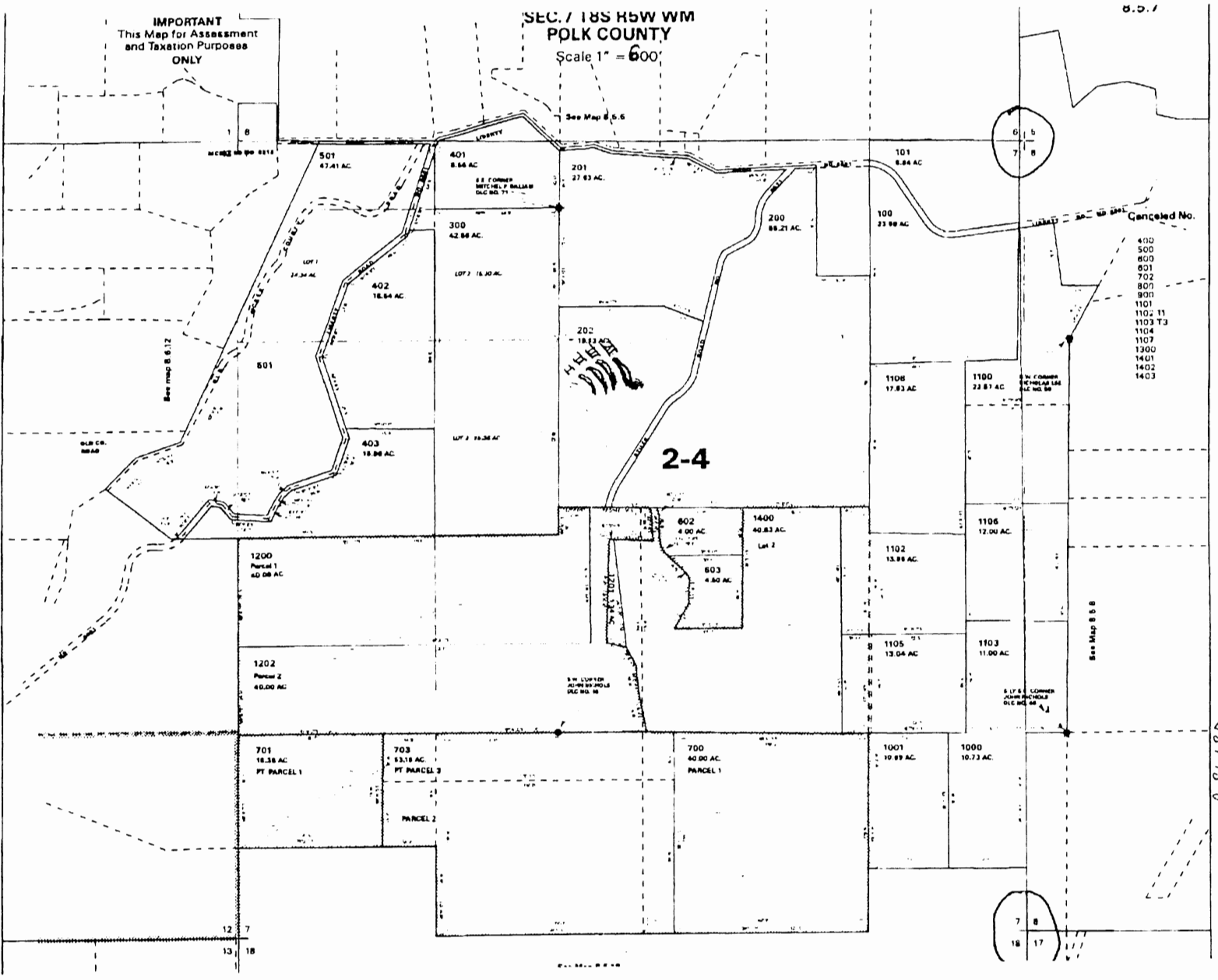


I 1600 FT SOUTH AND 2910 FT WEST
 II 1560 FT SOUTH AND 2840 FT WEST
 III 1530 FT SOUTH AND 2775 FT WEST
 IV 1540 FT SOUTH AND 2650 FT WEST
Kim Allan
 25 FEB 2005



R 86180 # ddy

RECEIVED BY OWRD
 OCT 05 2015
 SALEM, OR