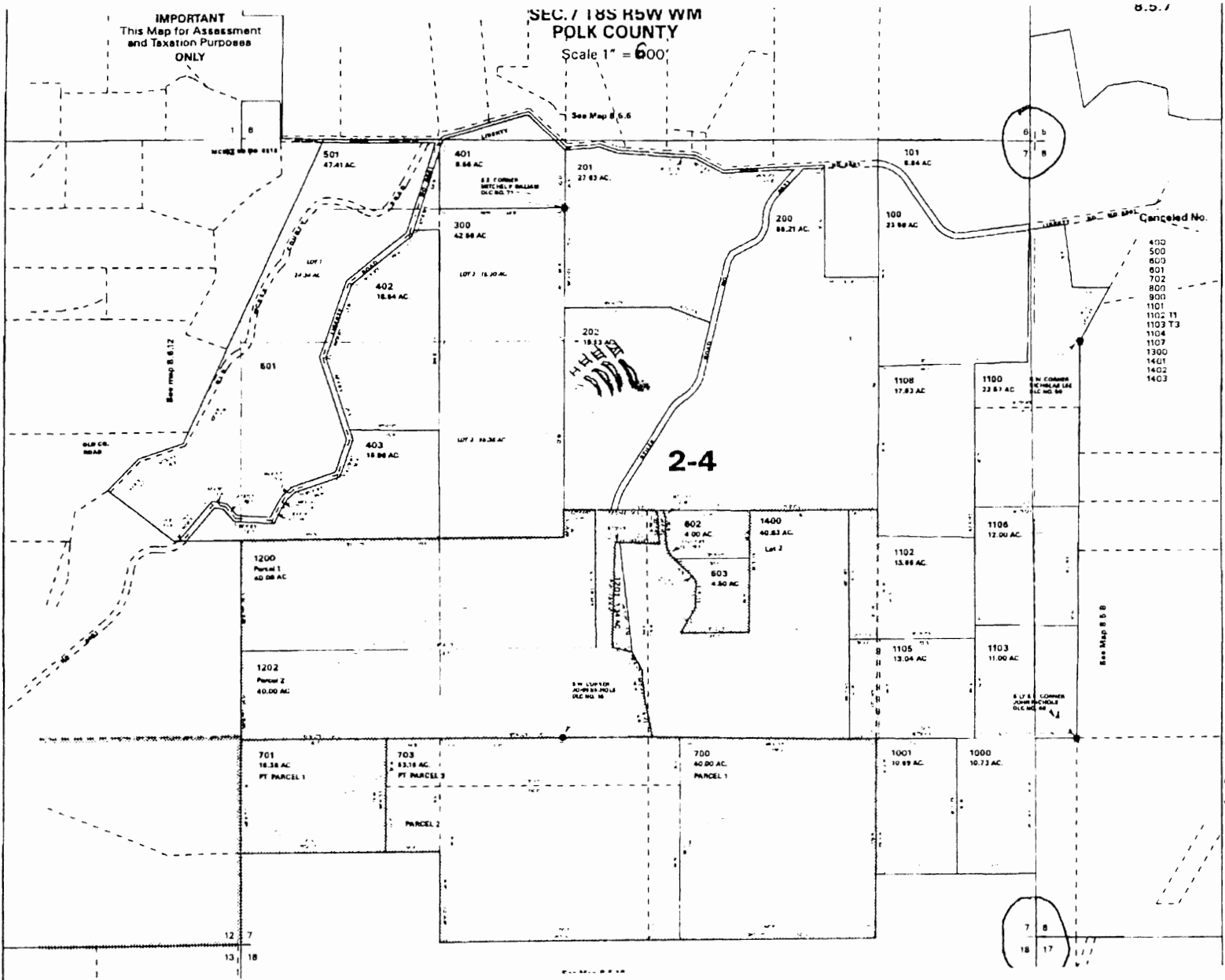


FZL ROAD, MEASURED FROM THE SE corner SECTION 1  
 I 1600 FT SOUTH AND 2910 FT WEST  
 II 1560 FT SOUTH AND 2840 FT WEST  
 III 1530 FT SOUTH AND 2775 FT WEST  
 IV 1540 FT SOUTH AND 2650 FT WEST  
 Brian J. Palmer



28198 R # ddr

SALEM, OR

OCT 05 2015

RECEIVED BY OWPRD