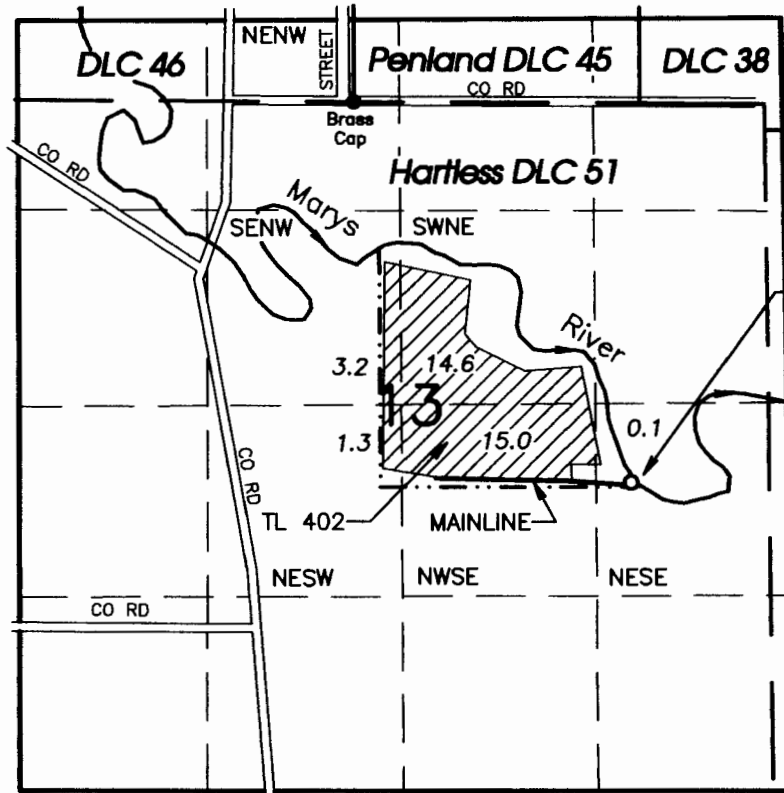


T12S, R6W, W.M.



- BRASS CAP AT SW CORNER DLC 45
- PROPERTY / TAX LOT LINE
- 1/6TH LINE

POD#2: SOUTH 2610 FT & EAST 1880 FT FROM THE SW CORNER, HENRY PENLAND DLC 45. LAT N 44°31'30.84", LONG W 123°21'27.43"

FISH SCREEN INSTALLED AT THE INTAKE AT POD#2. THE PUMP IS S50°W 25 FEET FROM POD#2. THE METER IS S74°W 35 FEET FROM THE PUMP, S83°W 55 FEET FROM POD#2.

INFORMATION FROM CERTIFICATE 41975 & FPS MAP, GLO SURVEYS T12S R6W, COUNTY SURVEY GHC12600016, GPS & GROUND SURVEY OF POD #2.

1" = 1320

RECEIVED BY OWRD

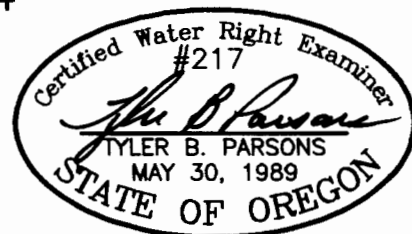
NOV 12 2013

SALEM, OR

CLAIM OF BENEFICIAL USE MAP

FOR
VITAL FARMLAND LP
 Transfer T-11374

Prepared: October 24, 2013
 PARSONS SURVEYING
 1915 S.E. Stone St.
 Corvallis, OR 97333
 541-752-7515
 Project No. 1204



This map is not intended to provide legal dimensions or locations of property ownership lines

RENEWS: 12/31/2014