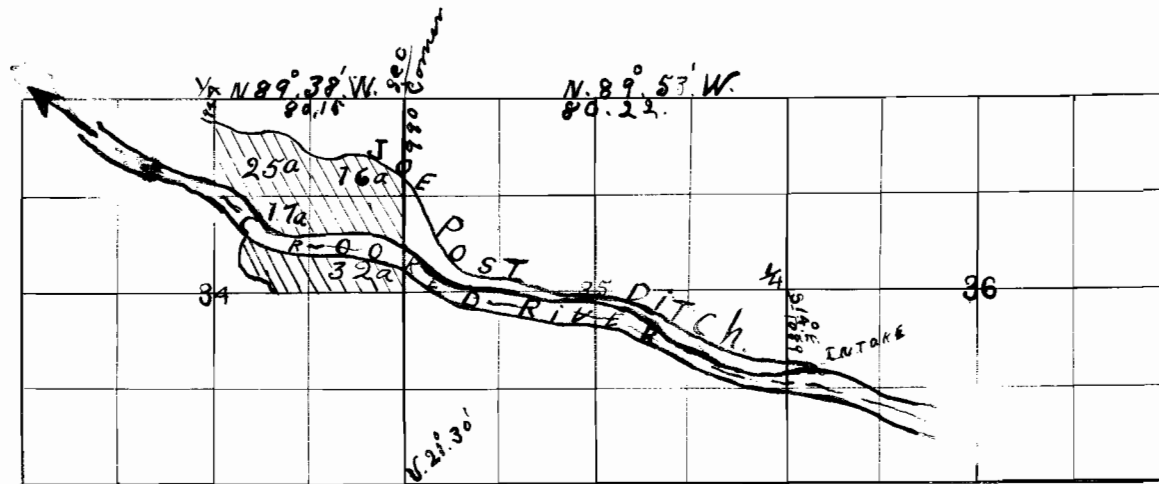


Township 16 S. Range 19 E. W. M.

OFFICE OF STATE ENGINEER
 REDEVELOPMENT
 JUL 1916
 TALSMA - OREGON

503 R
 3003

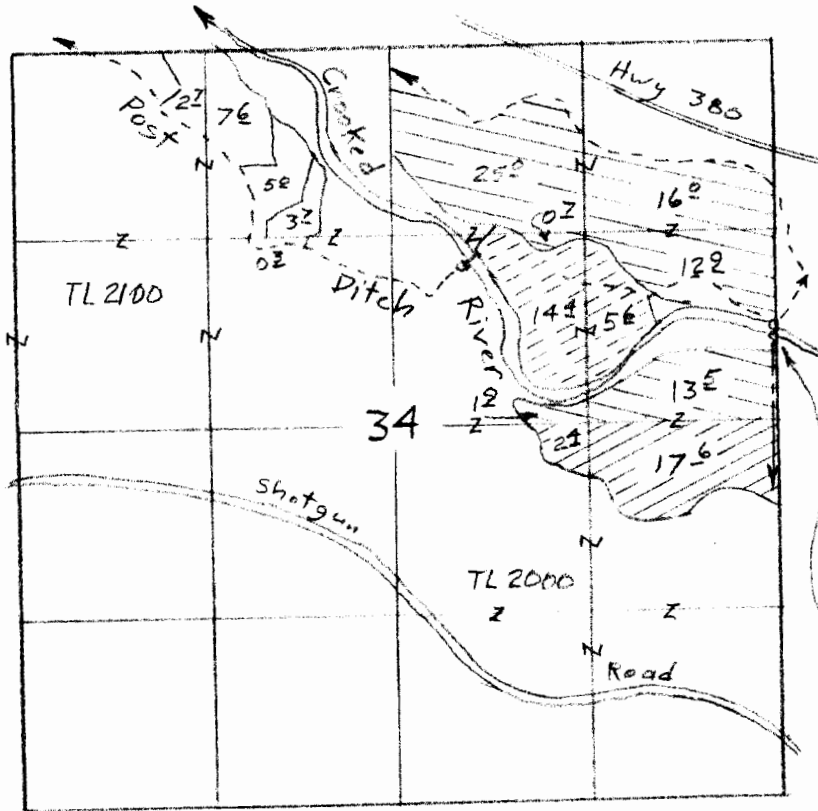


Intake S. 14° 0' E. 1089. From 1/4 Sec. corner
 between Sec. 36 and 35, T. 16 S. R. 19 E. W. M. Thence
 N. 70° 0' W. 400. N. 81° 30' W. 100. N. 88° 0' W. 200. N. 70° 0' W. 300. N. 60° 31' W.
 300. S. 64° 45' W. 200. S. 71° 0' W. 400. N. 65° 15' W. 100. N. 23° 0' W. 100.
 N. 60° 0' W. 100. N. 28° 30' W. 100. N. 64° 0' W. 400. S. 81° 30' W. 180. N. 68° 0' W. 200.
 N. 88° 45' W. 200. N. 70° 0' W. 180. N. 74° 0' W. 225. N. 34° 0' W. 275.
 N. 47° 0' W. 100. N. 34° 0' W. 200. N. 22° 0' W. 200. N. 56° 0' W. 160. N. 32° 0' W. 140.
 N. 40° 30' W. 300. N. 75° 0' W. 100. N. 84° 45' W. 100. S. 82° 15' W. 400.
 N. 64° 30' W. 100. S. 84° 0' W. 100. N. 77° 30' W. 200. N. 51° 0' W. 300. N. 34° 0' W. 100.
 N. 14° 0' W. 800. N. 57° 30' W. 200. N. 54° 15' W. 200. N. 87° 30' W. 100. S. 67° 0' W. 100.
 S. 79° 15' W. 200. S. 81° 0' W. 100. N. 81° 10' W. 100. N. 55° 0' W. 100. S. 83° 0' W. 100.
 N. 61° 15' W. 100. N. 43° 15' W. 200. N. 20° 15' W. 300. N. 77° 45' W. 300. S. 43° 30' W. 200.
 N. 60° 0' W. 700. Terminus 194. S. of 1/4 Sec. corner, between Sec. 34
 and 27, T. 16 S. R. 19 E. W. M.

I Wade Huston of Pineville, Cook
 County Oregon do hereby certify that this
 map was made from notes taken during
 an actual survey made by me on June 24,
 1916 and that it correctly represents the
 works described in the accompanying
 application, together with the location
 of ditches in the immediate vicinity, and
 has written thereon the area in each
 smallest legal subdivision which it
 is proposed to irrigate.

Wade Huston
 Surveyor.

T. 16 S., R. 19 E., W.M.



Scale 1" = 1320'
(4" = 1 mile)

PDD's #2 N&S
2100'S ± 10' W from
NE Corner Sec 34
2200'S ± 10' W from
NE corner Sec 34

- C-63825 (1916)
- ☉ From: 20^{acres}
- ☉ To: 20^{acres}
- ☉ No change 70^{acres}

RECEIVED BY OWRD

SEP 24 2015

SALEM, OR

Transfer Application Map for Aspen Valley Ranch



Renewal Dec 31, 2015

Sheet 3 of 3

T 12160

This map is for the purpose of
locating a water right only
and has no intent to provide
legal dimensions or the location
of property lines.

ESTES SURVEYS, LLC

PO Box 17519
Bend, OR 97305-7519
503-585-7588

60382 Arroyo
Bend, OR
(541) 382-7588