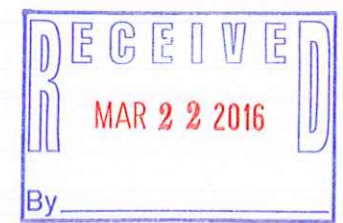


POD 1 is located in T18S, R41E in the SE NE of section 25;
1,860 feet south and 410 feet west from the NE corner of Section 25.

POD 2 is located in T18S, R41E in the NW SE of corner of Section 26;
1,490 feet north and 2,030 feet west from the SE corner of Section 26.

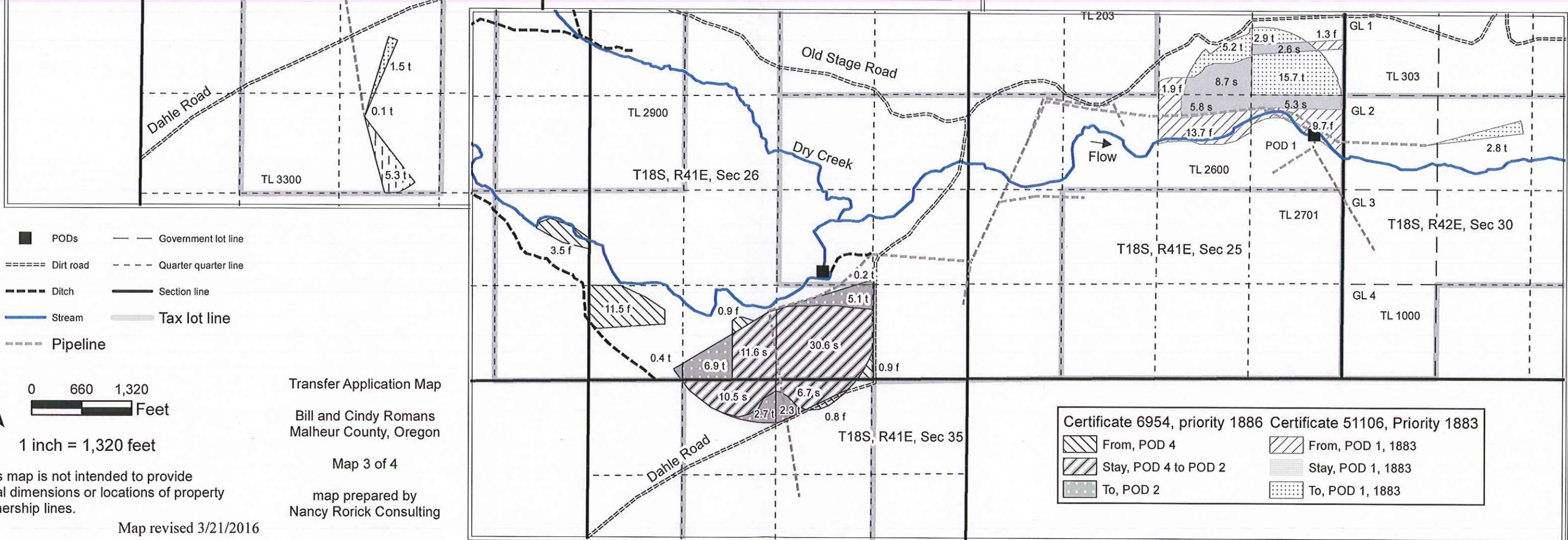
POD 3 is located in T18S, R41E in the NW NW corner of Section 27;
70 feet east and 60 feet south of the NW corner of section 27.

POD 4 is located in T18S, R41E in the NE NW corner of Section 27;
1,120 feet south and 2,130 feet east from the NW corner of section 27.



Cert 6954, priority 1881 Certificate 51106, priority 1876

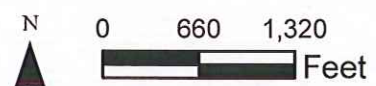
From, POD 3	From, POD 2
Stay, POD 3	To, POD 1
To, POD 2	To, POD 2



Certificate 6954, priority 1886 Certificate 51106, Priority 1883

From, POD 4	From, POD 1, 1883
Stay, POD 4 to POD 2	Stay, POD 1, 1883
To, POD 2	To, POD 1, 1883

- PODs
- Government lot line
- Dirt road
- Quarter quarter line
- Ditch
- Section line
- Stream
- Tax lot line
- Pipeline



1 inch = 1,320 feet

This map is not intended to provide legal dimensions or locations of property ownership lines.

Map revised 3/21/2016

Transfer Application Map
Bill and Cindy Romans
Malheur County, Oregon
Map 3 of 4
map prepared by
Nancy Rorick Consulting