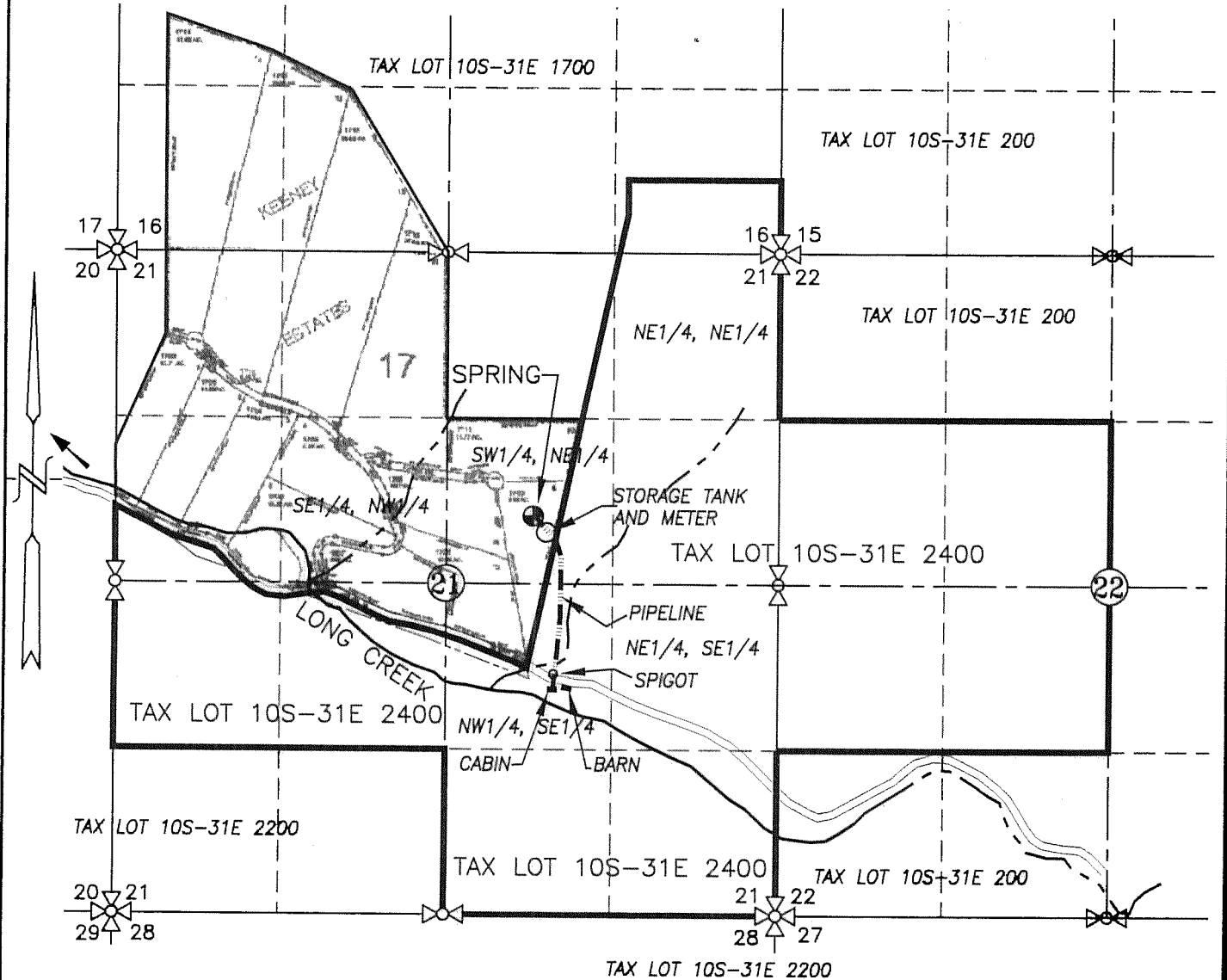


SECTIONS 16, 21 & 22, TWP.10 S. R.31 E. W.M.
GRANT COUNTY, OREGON

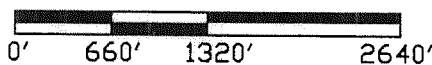


LEGEND :

- SPRING: 2098' S. & 1952 W. OF THE NE COR. SEC. 21
- PIPELINE
- ~ STREAM WITH DIRECTIONAL FLOW

CLAIM OF BENEFICIAL USE MAP

SCALE: 1" = 1320'



RECEIVED

SEP 01 2011

WATER RESOURCES DEPT
SALEM, OREGON

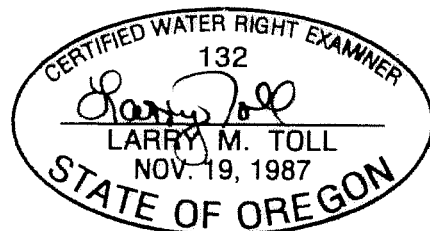
APPLICATION No. S-87005

PERMIT No. S-54643

IN THE NAME OF:

NEAL FAMILY TRUST

DATE: AUGUST 24, 2011



EXPIRES: 06/30/2012

BY: **TENNESON ENGINEERING CORP.**
3313 W. 2ND. STREET, SUITE 100
THE DALLES, OREGON. 97058
PH. 541-296-9177
FAX 541-296-6657



NOTE:

"THIS MAP IS NOT INTENDED TO PROVIDE DIMENSIONS OR LOCATIONS OF PROPERTY OWNERSHIP LINES."