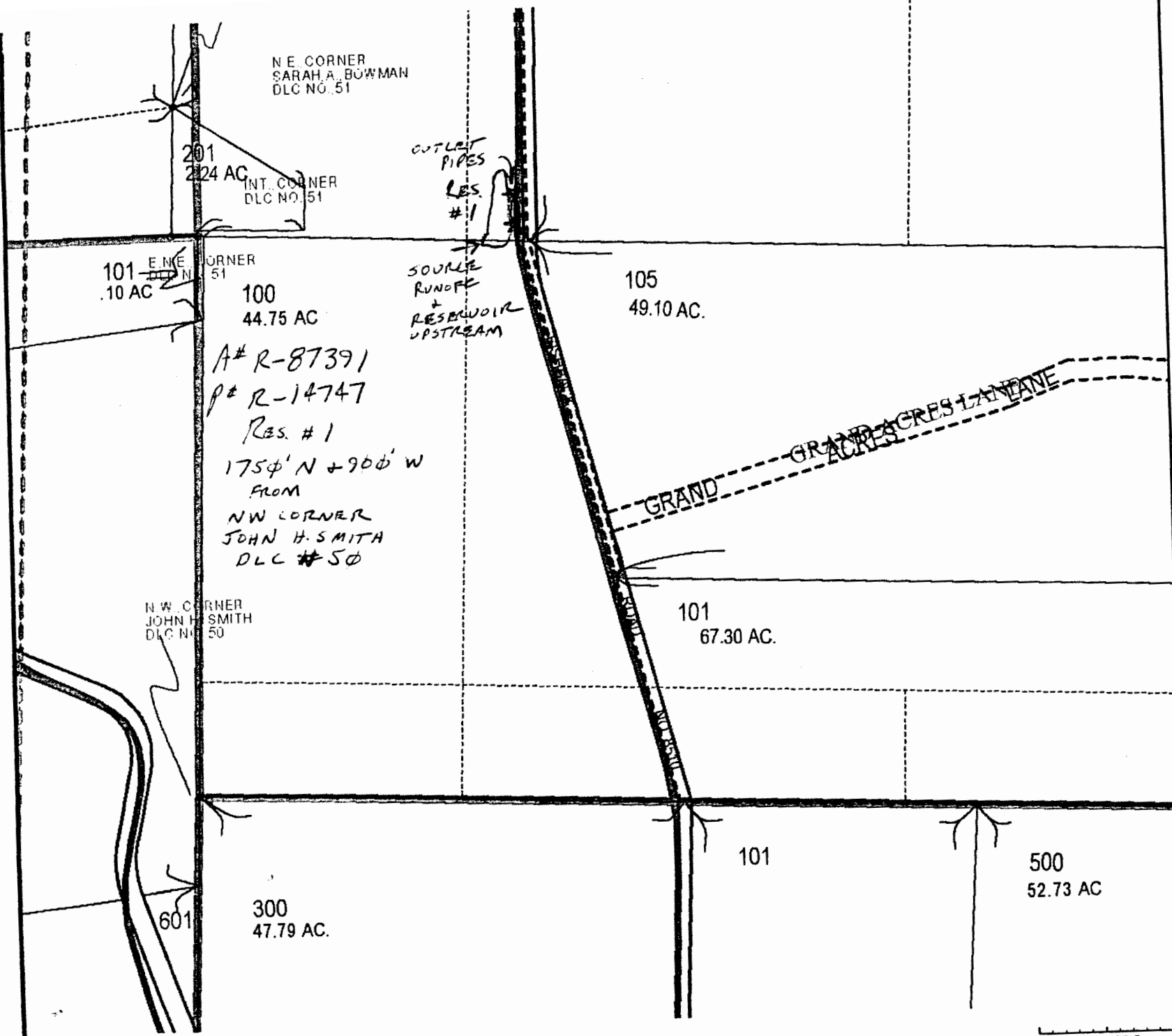


9.5.5

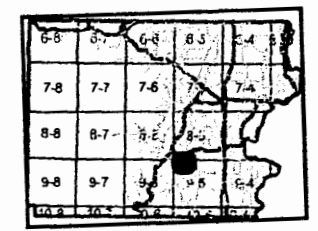
- ContMap
- contlar
- contmap
- DLC
- Railroad
- Roads
- GRAVEL
- Section
- Subdivision
- Taxlot14
- Taxlot Arrows14
- Taxlot Boundary14
- taxlot14
- TaxMap
- 2
- 32
- 33
- 34
- 47
- 7
- 8
- Updates





RECEIVED

JUN 24 2014

WATER RESOURCES DEPT
SALEM, OREGON



6/16/2014

POLK COUNTY

1in. = 400 ft.

This map was produced using the Polk County GIS data. The GIS data is maintained by the county to support its governmental activities. The county is not responsible for map errors, omissions, misuse or misinterpretation.