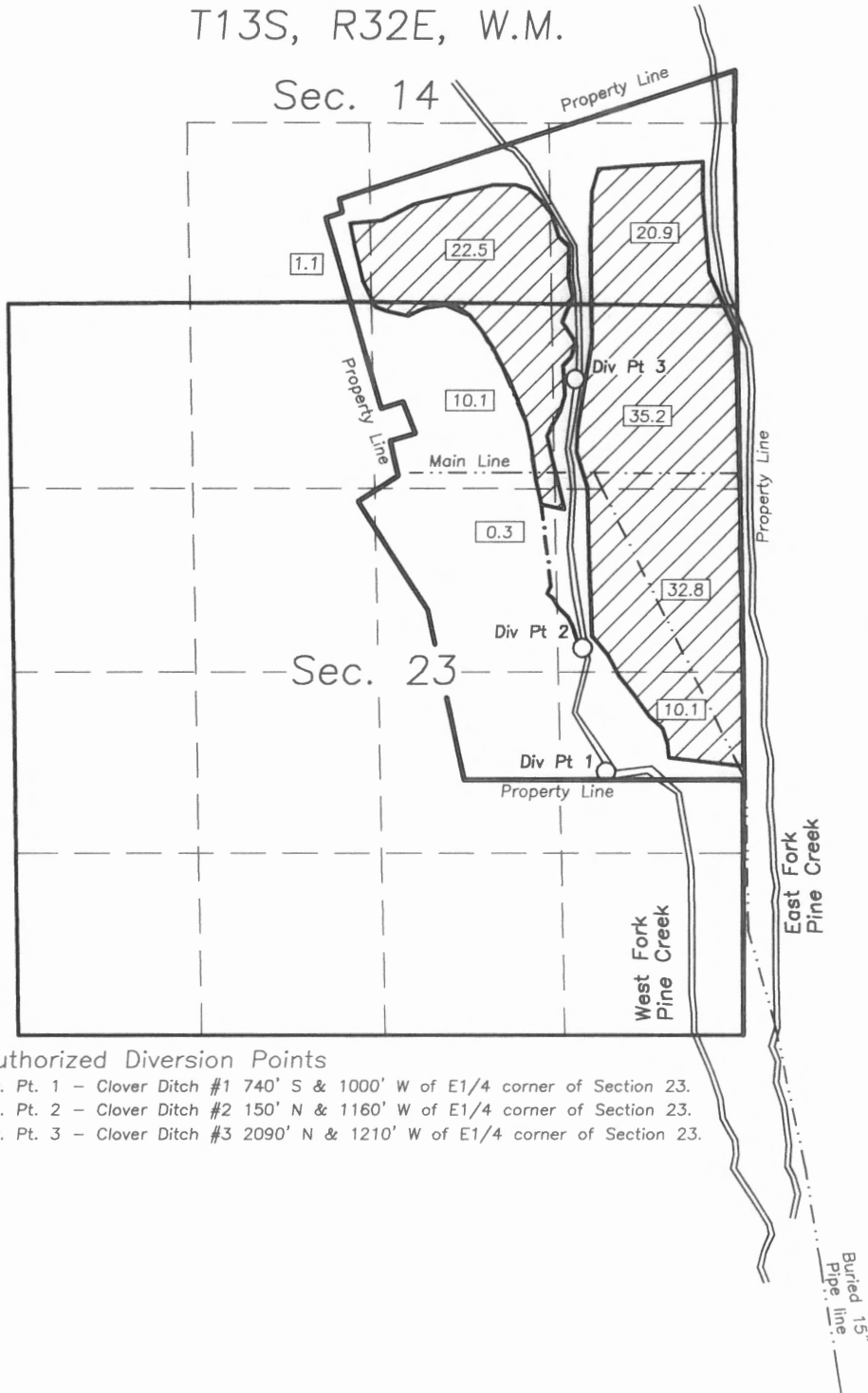


T13S, R32E, W.M.



Scale 1"=1320'

### FINAL PROOF SURVEY

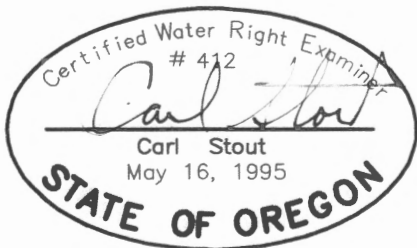
UNDER  
 Transfer No. T-7437  
 For  
 Ken Holliday  
 Tax map 13-32  
 Tax Lot 104

Surveyed Sept. 20, 2007

 C 53018 Priority 1908

#### Authorized Diversion Points

- Div. Pt. 1 - Clover Ditch #1 740' S & 1000' W of E1/4 corner of Section 23.
- Div. Pt. 2 - Clover Ditch #2 150' N & 1160' W of E1/4 corner of Section 23.
- Div. Pt. 3 - Clover Ditch #3 2090' N & 1210' W of E1/4 corner of Section 23.



Additional Point of  
 Diversion - Hillis Ditch  
 750' S and 1140' E  
 of NW corner of  
 Section 36, T13S, R32E.

This map is not intended to  
 provide legal dimensions or  
 locations of property ownership  
 lines.

**RECEIVED**  
 JAN 15 2010  
 WATER RESOURCES DEPT  
 SALEM, OREGON