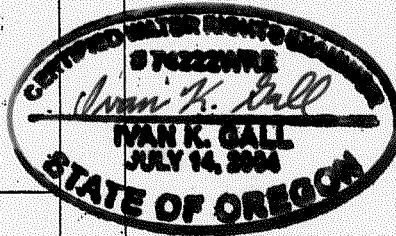


This map was prepared by
 DISTRICT 8 WATERMASTER
 RICK LUSK, UNDER THE DIRECTION
 AND CONTROL OF C.W.R.E.

MAP. 1 OF 2



- 73599
- 73572
- 73593
- 73610
- 73405
- 73580
- 4387
- 4070
- 73999
- 73583
- 73406
- 73410
- 73567
- 73552
- 73594

RECEIVED

JAN 28 2010

WATER RESOURCES DEP
 SALEM, OREGON

T. 8. S. R. 40. E. W.M.

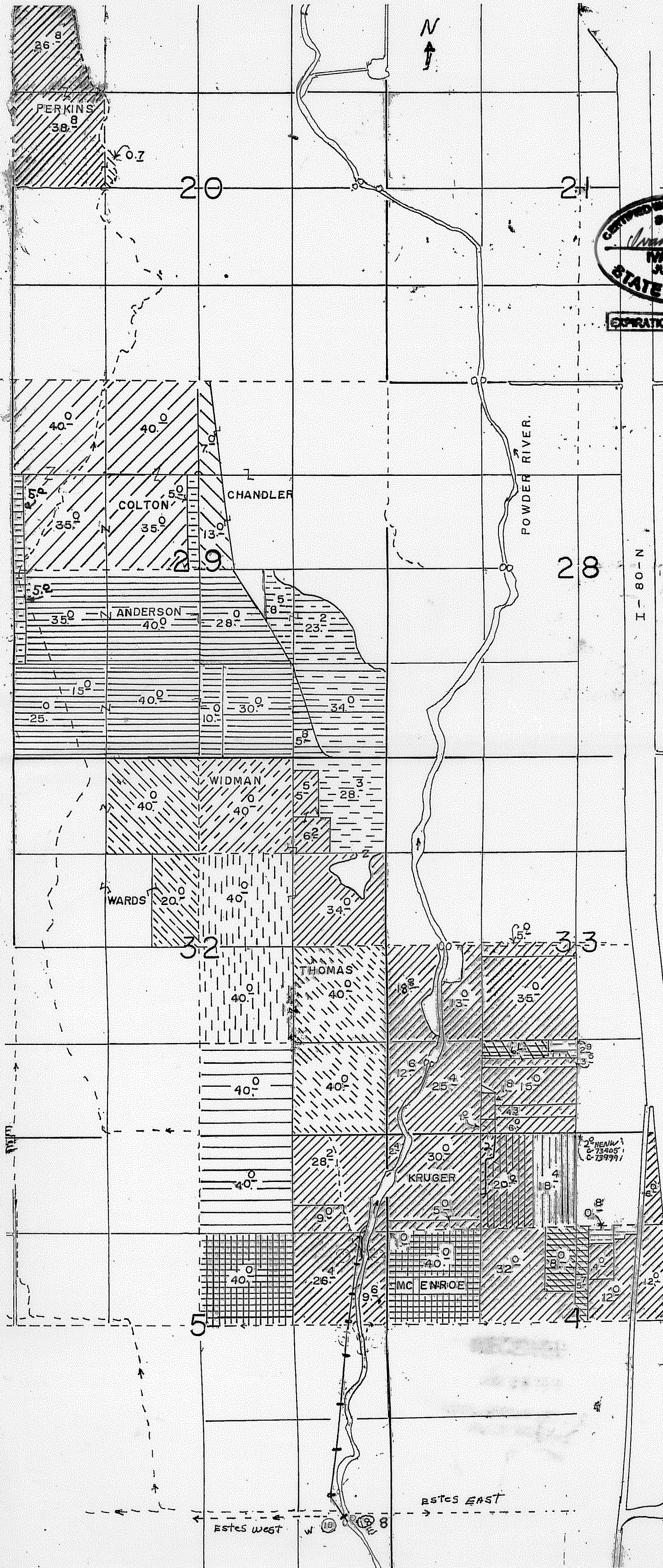
T. 9. S. R. 40. E. W.M.

SCALE: 1" = 1320'

THIS MAP IS NOT INTENDED TO
 PROVIDE LEGAL DIMENSIONS
 OR LOCATIONS OF PROPERTY
 OWNERSHIP LINES.

(18) P.O.D. 110' S. 600' W. FROM N.E. COR. SEC. 8,
 T. 9. S. R. 40. E. W.M. ADDITIONAL ESTES WEST
 PIPELINE.

ESTES EAST.
 (18) P.O.D. T. 9. S. R. 40. E. W.M. SEC. 8,
 100'S. - 550' W. FROM N.E. COR. SEC. 8



ESTES EAST

ESTES WEST

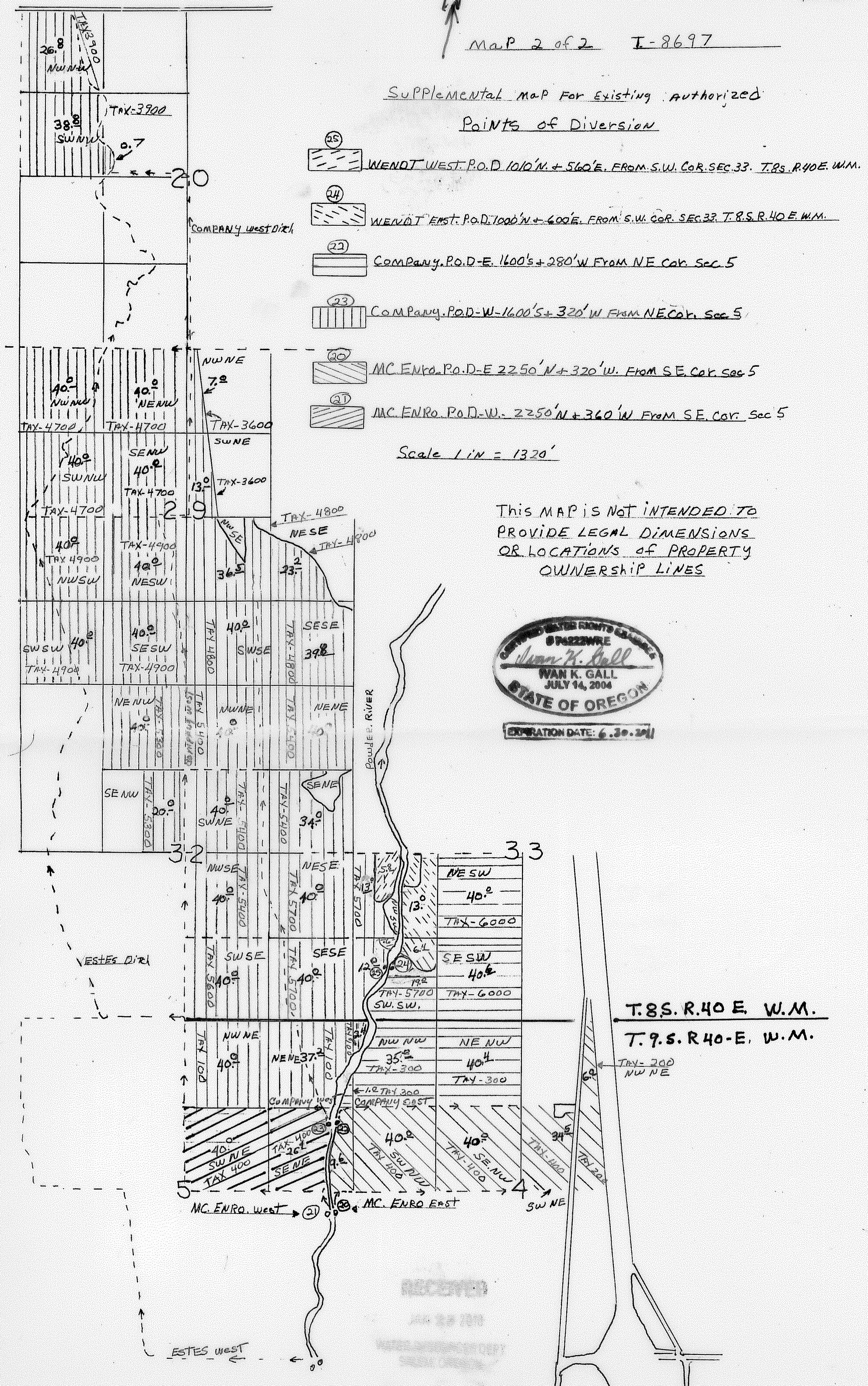
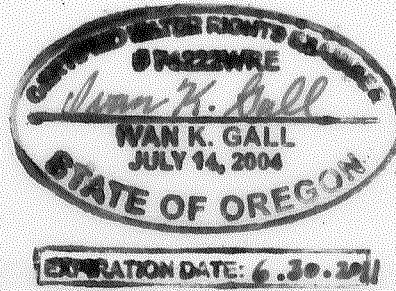
J.C.

Supplemental Map For Existing Authorized Points of Diversion

- 25 WENDT WEST P.O.D. 1010' N + 560' E. FROM S.W. COR. SEC. 33. T.8S. R.40E. W.M.
- 24 WENDT EAST P.O.D. 1000' N + 600' E. FROM S.W. COR. SEC. 33. T.8S. R.40E. W.M.
- 22 COMPANY P.O.D. E. 1600'S + 280' W FROM NE COR. SEC 5
- 23 COMPANY P.O.D. W. 1600'S + 320' W FROM NE COR. SEC 5
- 20 MC ENRO P.O.D. E. 2250' N + 320' W. FROM SE COR SEC 5
- 21 MC ENRO P.O.D. W. 2250' N + 360' W FROM SE COR. SEC 5

Scale 1" = 1320'

This MAP IS NOT INTENDED TO PROVIDE LEGAL DIMENSIONS OR LOCATIONS OF PROPERTY OWNERSHIP LINES



T.8S. R.40 E. W.M.

T.9.S. R40-E. W.M.

RECEIVED