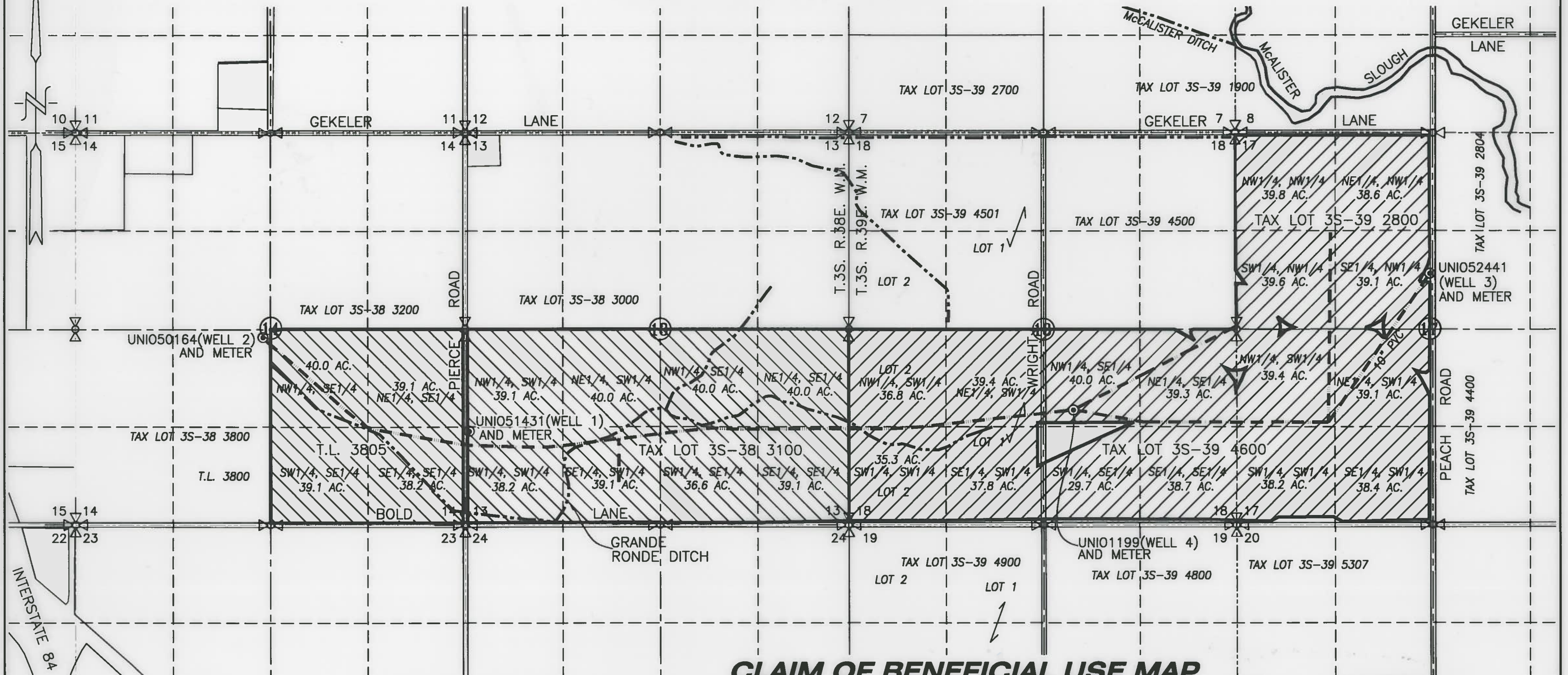


SECTIONS 13 & 14, TWP. 3 S. RANGE 38 E. AND SECTIONS 17 & 18, TWP. 3 S. RANGE 39 E., W.M.
UNION COUNTY, OREGON



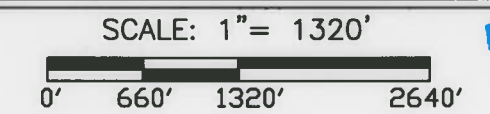
CLAIM OF BENEFICIAL USE MAP

TRANSFER No. 11830
 IN THE NAME OF:
THREEMILE CANYON FARMS
 DATE: JUNE 30, 2016
AMENDED OCTOBER 13, 2016
 BY: **TENNESON ENGINEERING CORP.**
 3775 CRATES WAY
 THE DALLES, OREGON. 97058
 PH. 541-296-9177
 FAX 541-296-6657



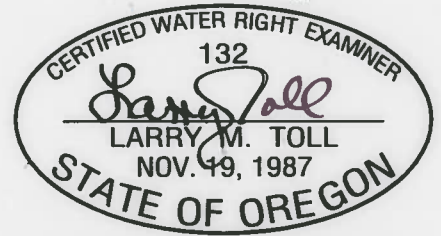
LEGEND :

- ⊙ UNIO51431 (WELL 1): LOCATED 1,280' N & 80' E. FROM THE SW CORNER SECTION 13, T.3 S, R.38 E., W.M.
- ⊙ UNIO50164 (WELL 2): LOCATED 2,520' N. & 2,769' W. FROM THE SE CORNER SECTION 14, T.3 S. R.38 E. W.M.
- ⊙ UNIO52441 (WELL 3): LOCATED 1,900' S. & 2,620' E. FROM THE NW CORNER OF SEC. 17, T.3 S. R.39 E. W.M.
- ⊙ UNIO1199 (WELL 4); LOCATED 1,509' N. & 443' E. FROM THE S1/4 CORNER SECTION 18, T.3 S., R.39 E., W.M.



- POU INVOLVED IN TRANSFER FROM CERTIFICATE 87023 (609.2 ACRES)
- POU INVOLVED IN TRANSFER FROM CERTIFICATE 89059 (468.5 ACRES)
- EXISTING WATER LINES
- DRAINAGE WITH DIRECTIONAL FLOW

RECEIVED BY OWRD
 OCT 14 2016



NOTE:
 EXPIRES: 06/30/2018
 "THIS MAP IS NOT INTENDED TO PROVIDE LEGAL DIMENSIONS OR LOCATIONS OF PROPERTY OWNERSHIP LINES."
 W.O. #14818wr