

RECEIVED BY OWRD

RECEIVED BY OWRD

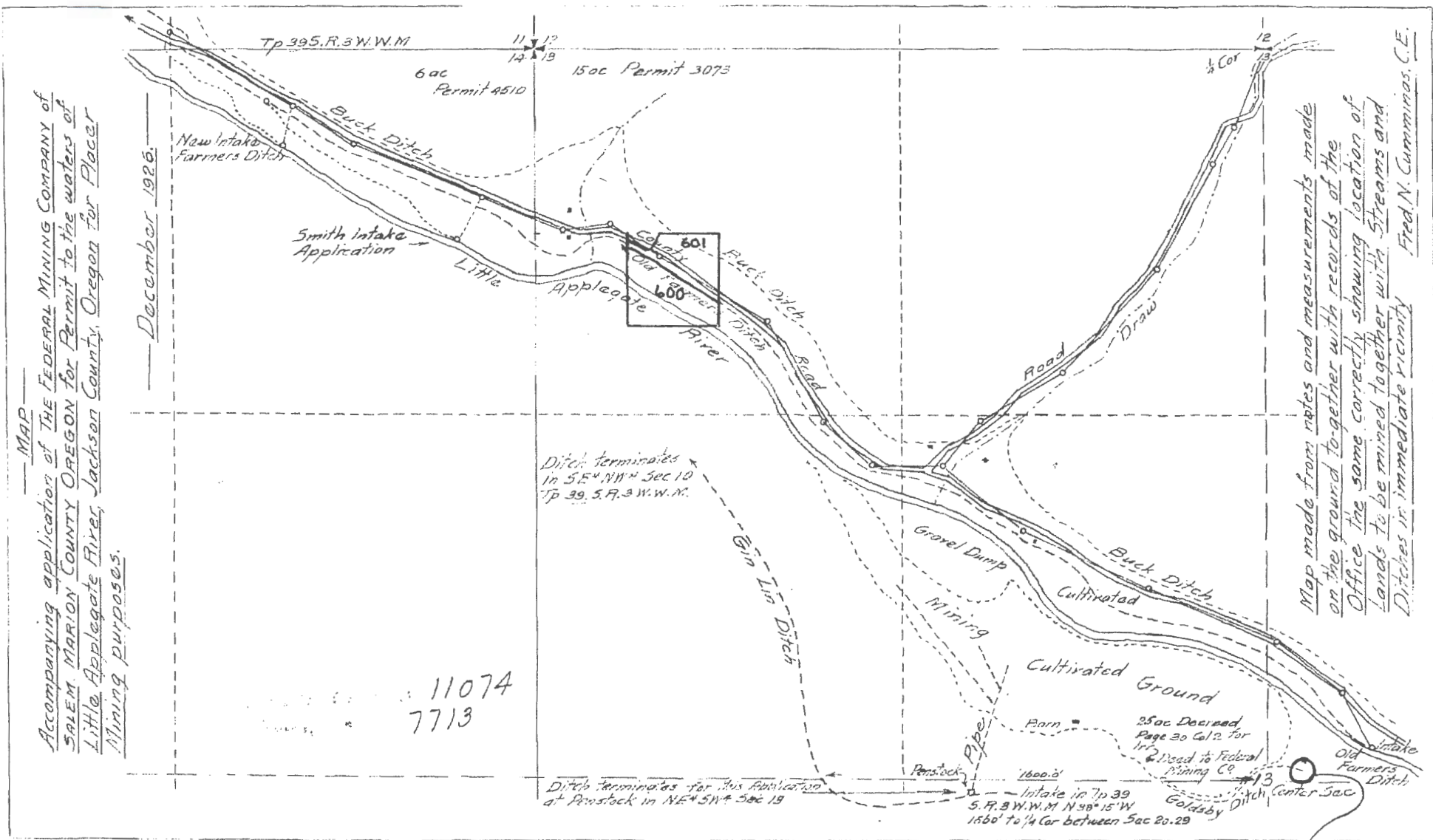
MAP # 2 OF 2

MAR 17 2016

MAY 16 2016

SALEM, OR

SALEM, OR



MAP
 Accompanying application of THE FEDERAL MINING COMPANY of
 SALEM, MARION COUNTY OREGON for Permit to the waters of
 Little Applegate River, Jackson County, Oregon for Placer
 Mining purposes.

December 1926.

Map made from notes and measurements made
 on the ground together with records of the
 Office the same correctly showing location of
 lands to be mined together with Streams and
 Ditches in immediate vicinity Fred N. Cummins, C.E.

Ditch terminates
 in SE 1/4 NW 1/4 Sec 10
 Tp 39, S. 9. 3 W.W.M.

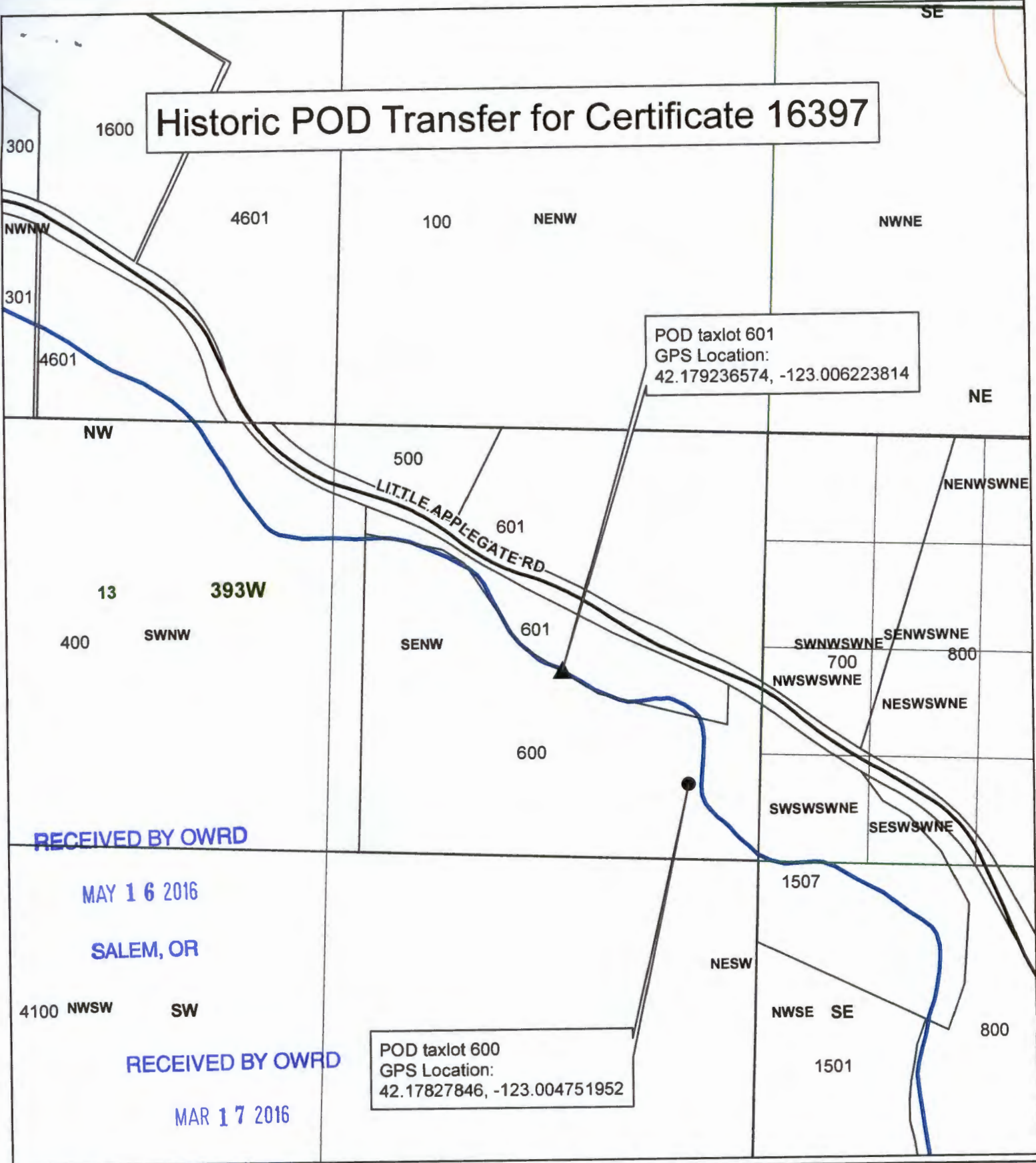
Ditch terminates for this publication
 at Penslock in NE 1/4 SW 1/4 Sec 19

ORIGINAL POD FOR TAX LOTS
 600 & 601

T 12382

11074
 7713

Historic POD Transfer for Certificate 16397



POD taxlot 601
GPS Location:
42.179236574, -123.006223814

POD taxlot 600
GPS Location:
42.17827846, -123.004751952

RECEIVED BY OWRD

MAY 16 2016

SALEM, OR

RECEIVED BY OWRD

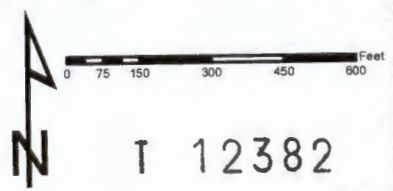
MAR 17 2016

SALEM, OR

Legend

- ▲ POD taxlot 601
- POD taxlot 600
- Taxlots
- Townships
- Sections
- Quarter Sections
- Quarter Quarter Sections

1 inch = 400 feet



JACKSON COUNTY
WATERMASTER

Prepared by Travis Kelly

This map is based on a digital database compiled by Jackson County from a variety of sources. Jackson County cannot accept responsibility for errors, omissions, or positional accuracy. There are no warranties, expressed or implied.