

CLAIM OF BENEFICIAL USE

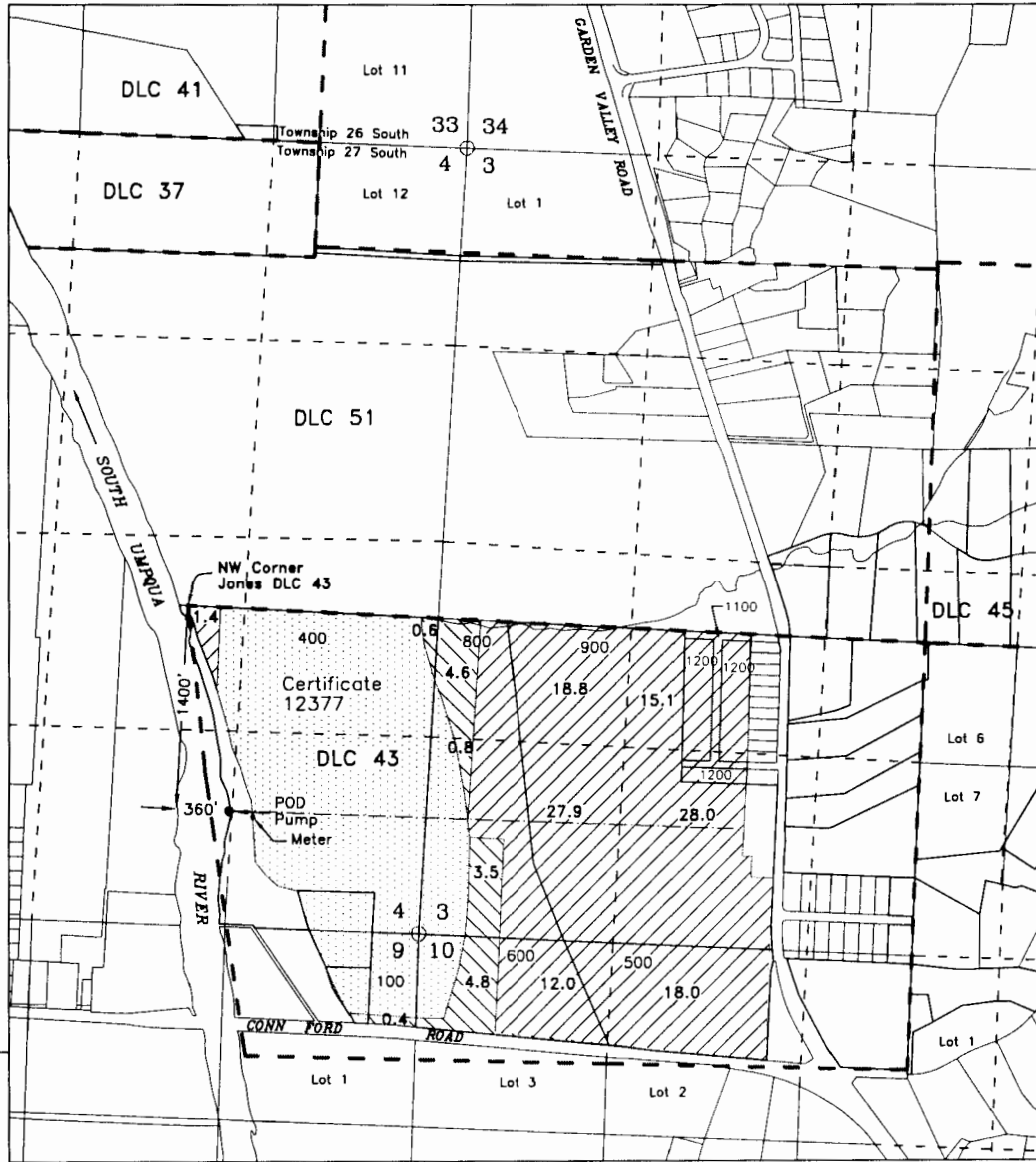
APPLICATION S-85239

PERMIT S-53952

IN THE NAME OF: BLUE HERON LAND CO., LLC

TOWNSHIP 27 SOUTH, RANGE 6 WEST, W.M.

DOUGLAS COUNTY, OREGON



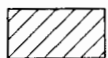
Portable Mainline

DLC Line

POD - SW/SE, Section 4, Within DLC 43, T27S, R6W, W.M., 1400 feet south & 360 feet east from the NW Corner of DLC 43

Supplemental Irrigation 135.9 Acres

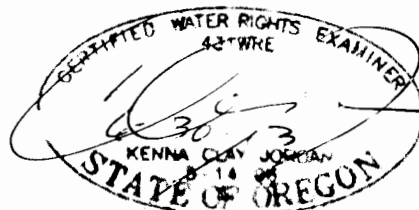
SOURCE: Galesville Reservoir; stored under Certificate 75970



Place of Use 121.2 Acres - Certificate 67517



Place of Use 14.7 Acres - Certificate 67546



NORTH

Scale

1" = 1320'

JORDAN ENGINEERING
460 JORDAN LANE
ROSEBURG, OR 97471
(541) 673-1931

Drawn 4/23/2012 n.e.d.

Base map - Douglas County GIS with 2005 FSA aerial photo overlay for assumed best fit

This map is not intended to provide legal dimensions or locations of property ownership lines

2012 5 9 2012
 2012 5 9 2012