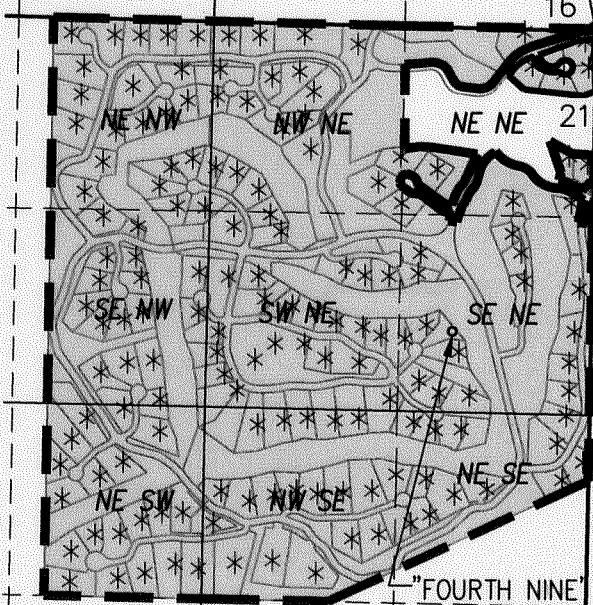
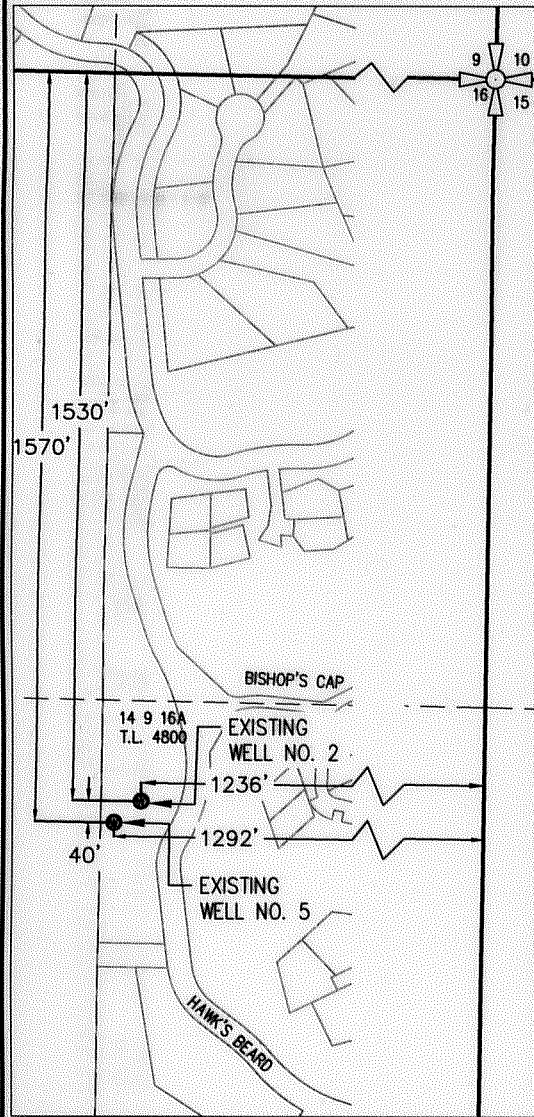
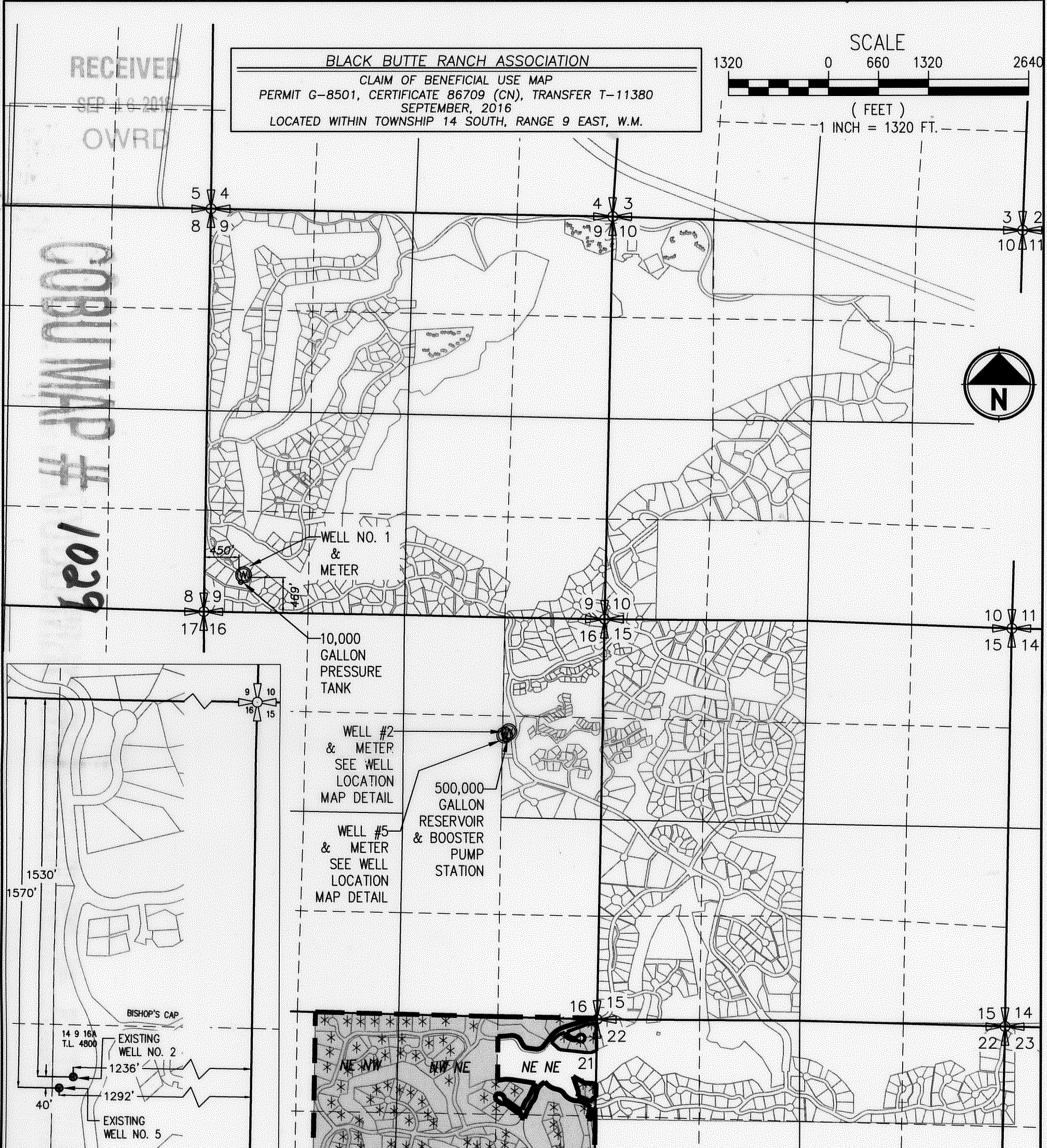
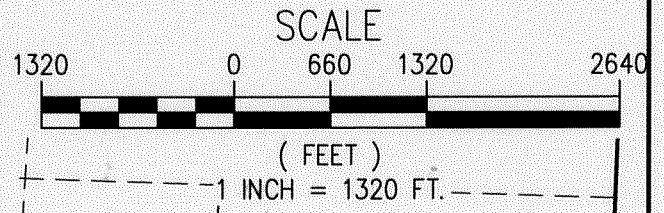


1029

RECEIVED
SEP 16 2016
OWRD

BLACK BUTTE RANCH ASSOCIATION
CLAIM OF BENEFICIAL USE MAP
PERMIT G-8501, CERTIFICATE 86709 (CN), TRANSFER T-11380
SEPTEMBER, 2016
LOCATED WITHIN TOWNSHIP 14 SOUTH, RANGE 9 EAST, W.M.



- LEGEND**
- WELL LOCATION
 - SECTION LINE
 - QUARTER SECTION LINE
 - SIXTEENTH SECTION LINE
 - TAXLOT LINE
 - AREA OF USE FOR GROUP DOMESTIC WATER RIGHT FOR 155 FAMILIES. PRIORITY DATE - FEB. 2, 1979.
 - SECTION CORNER

NOTE: THIS MAP WAS PREPARED FOR THE PURPOSE OF IDENTIFYING THE LOCATION OF WATER RIGHTS. THIS MAP IS NOT INTENDED TO PROVIDE LEGAL DIMENSIONS OR LOCATIONS OF PROPERTY OWNERSHIP LINES.

CERTIFIED WATER RIGHTS EXAMINER
80674 CWRE
Niall W. Boggs
NIALL W. BOGGS
JUNE 8, 2009
STATE OF OREGON
EXPIRES: 12-31-2017

DRAWING NO. 1 OF 1
WR1.0
TRANSFER T-11380

PROJECT NAME
CLAIM OF BENEFICIAL USE MAP
BLACK BUTTE RANCH ASSOCIATION

PRELIMINARY

Parametrix
ENGINEERING, PLANNING, ENVIRONMENTAL SCIENCES
595 SW BLUFF DRIVE, SUITE B | BEND, OR 97702
P. 541.508.7730
WWW.PARAMETRIX.COM
DATE: SEPTEMBER 2016
JOB No. 297-7391-001
DESIGNED: SCC
CHECKED: [Signature]
APPROVED: [Signature]

REVISIONS	DATE	BY

ONE INCH AT FULL SCALE. IF NOT, SCALE ACCORDINGLY