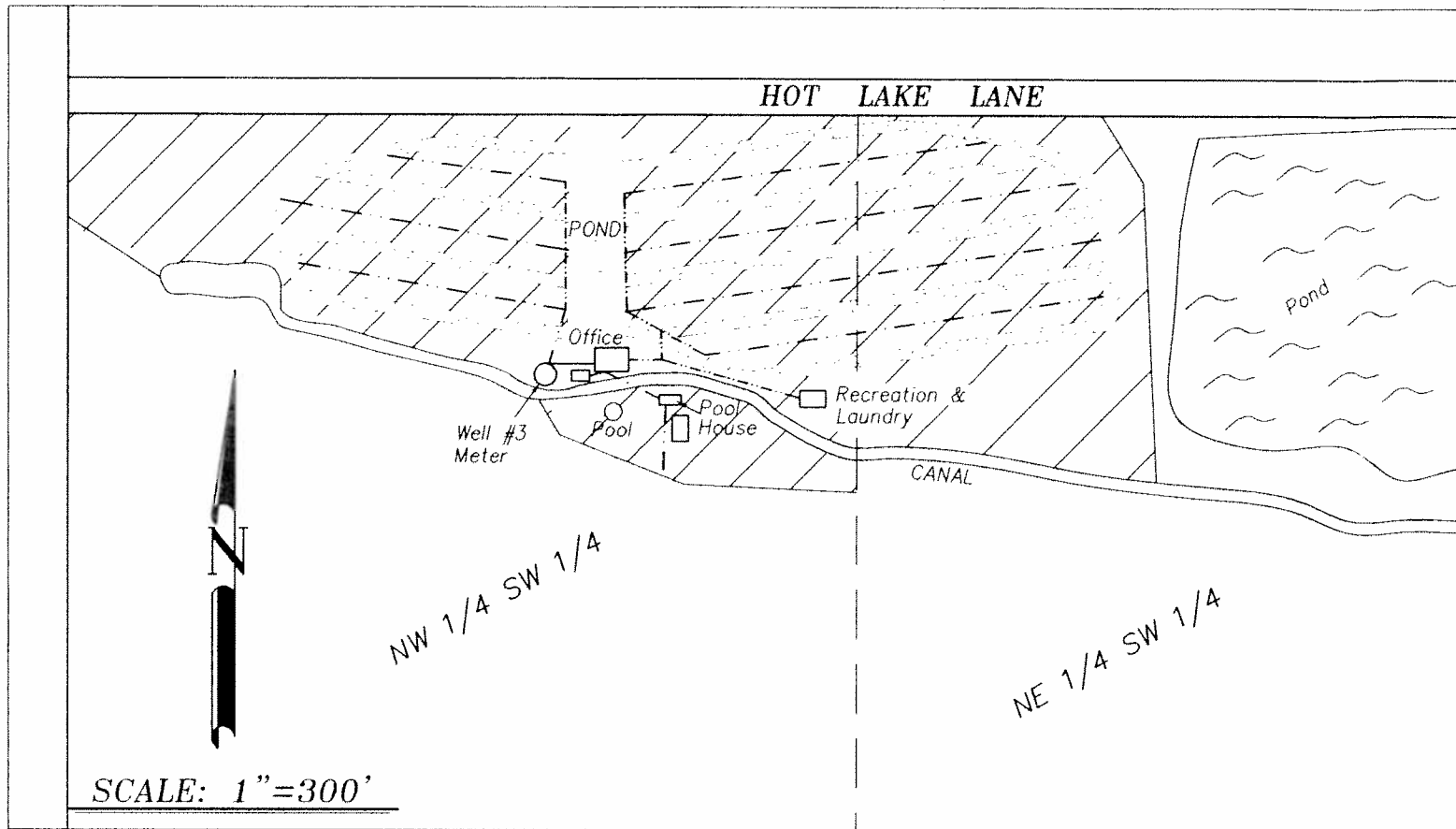
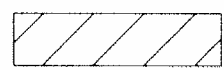




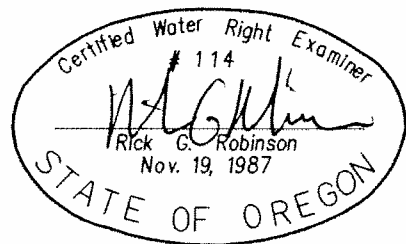
DETAIL



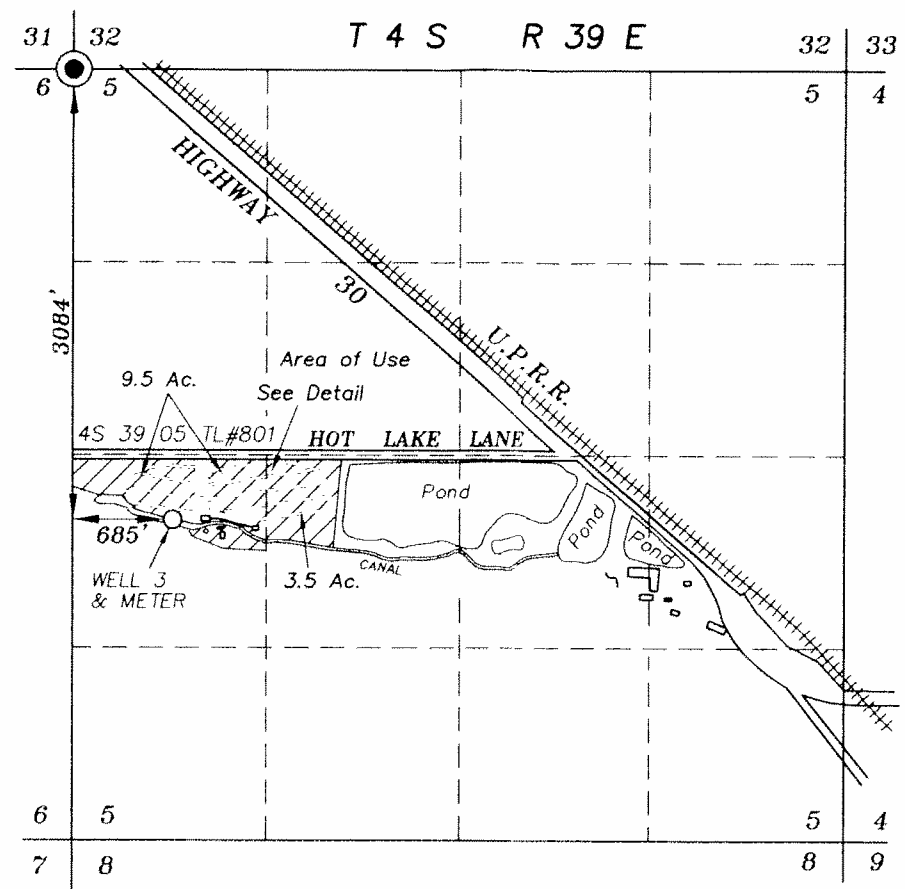
SCALE: 1"=300'

LEGEND

-  Lands with Commercial rights and Supplemental irrigation rights from well #3
-  Gravel surface
-  Buried water line



NOTE: The preparation of this map was for the purpose of identifying the location of water rights and has no intent to provide dimensions or location of property ownership lines. Location information shown hereon was furnished by the applicant.



SCALE: 1"=1320'

March 16, 2011
**FINAL PROOF MAP OF
 WATER RIGHTS FROM WELL #3
 FOR
 EAGLES HOT LAKE RV PARK
 BY**

**BAGETT - GRIFFITH & BLACKMAN
 2006 ADAMS AVENUE
 LA GRANDE, OREGON 97850**

APPLICATION NO. G-16646
 PERMIT NUMBER G-16213

RECEIVED

MAR 16 2011
 WATER RESOURCES DEPT
 SALEM, OREGON