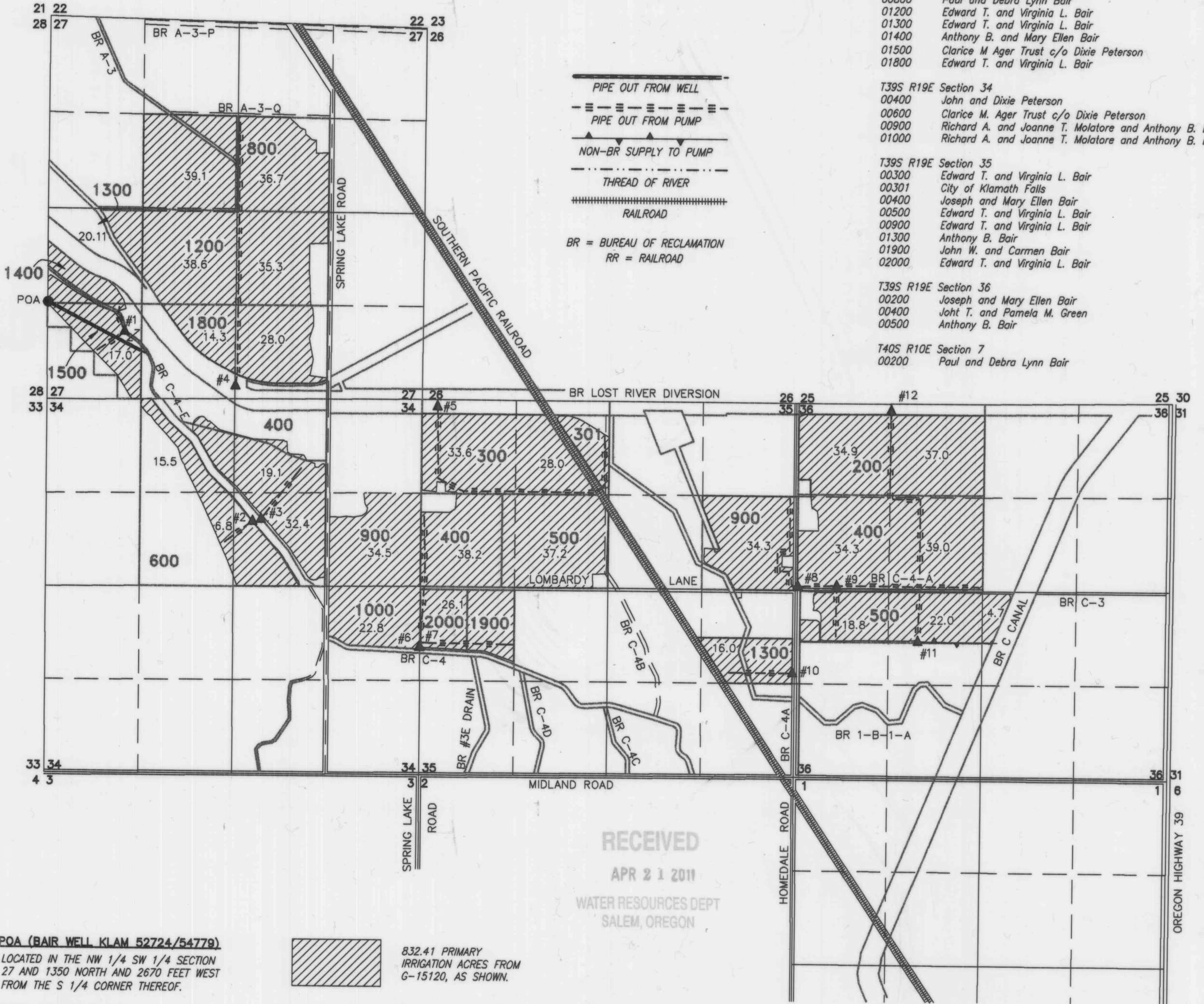


FINAL PROOF MAP TO ACCOMPANY COBU REPORT FOR GROUND WATER PERMIT G-15120 FOR BAIR FARMS, LLC

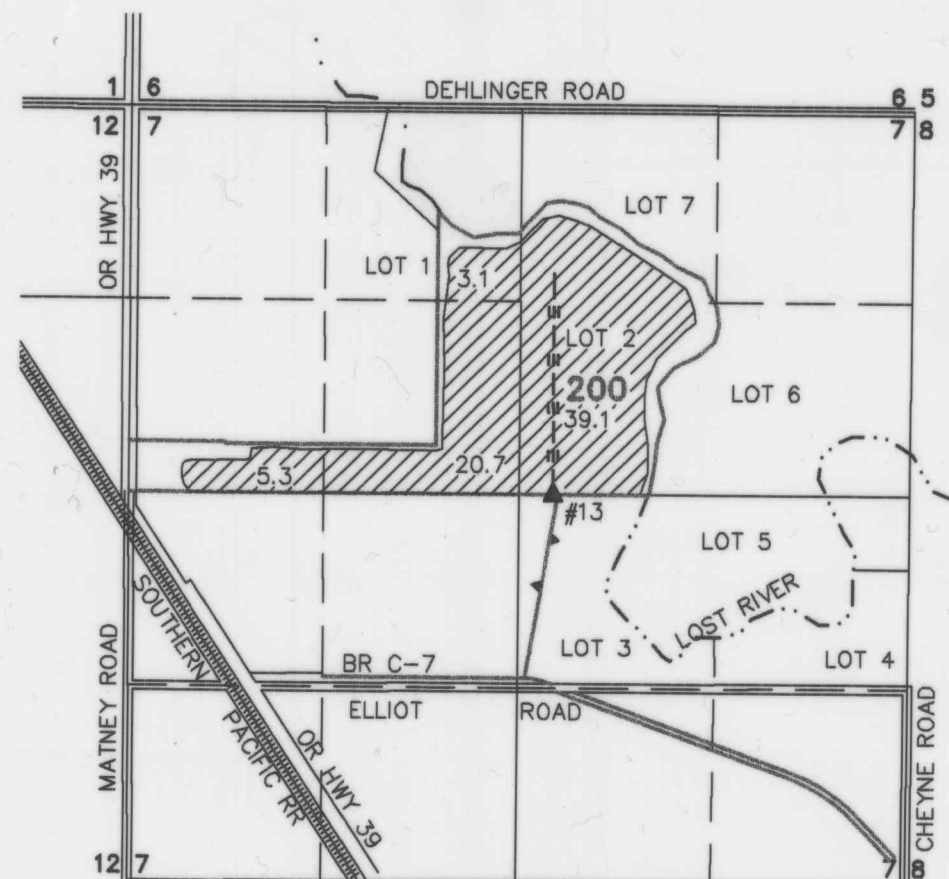
TOWNSHIP 39 SOUTH, RANGE 9 EAST, SECTIONS 27, 34, 35, AND 36, W.M.
ALL IN KLAMATH COUNTY, OREGON

TAX LOTS AND OWNERSHIP

T39S R19E Section 27	
00800	Paul and Debra Lynn Bair
01200	Edward T. and Virginia L. Bair
01300	Edward T. and Virginia L. Bair
01400	Anthony B. and Mary Ellen Bair
01500	Clarice M Ager Trust c/o Dixie Peterson
01800	Edward T. and Virginia L. Bair
T39S R19E Section 34	
00400	John and Dixie Peterson
00600	Clarice M. Ager Trust c/o Dixie Peterson
00900	Richard A. and Joanne T. Molatore and Anthony B. Bair
01000	Richard A. and Joanne T. Molatore and Anthony B. Bair
T39S R19E Section 35	
00300	Edward T. and Virginia L. Bair
00301	City of Klamath Falls
00400	Joseph and Mary Ellen Bair
00500	Edward T. and Virginia L. Bair
00900	Edward T. and Virginia L. Bair
01300	Anthony B. Bair
01900	John W. and Carmen Bair
02000	Edward T. and Virginia L. Bair
T39S R19E Section 36	
00200	Joseph and Mary Ellen Bair
00400	John T. and Pamela M. Green
00500	Anthony B. Bair
T40S R10E Section 7	
00200	Paul and Debra Lynn Bair



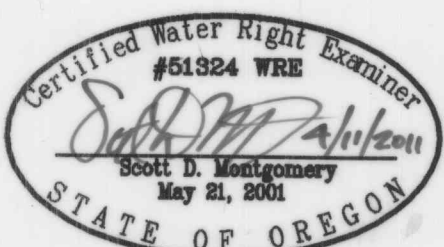
TOWNSHIP 40 SOUTH RANGE 10 EAST, SECTION 7, W.M.
ALL IN KLAMATH COUNTY, OREGON



- **POA (BAIR WELL KLAM 52724/54779)**
LOCATED IN THE NW 1/4 SW 1/4 SECTION 27 AND 1350 NORTH AND 2670 FEET WEST FROM THE S 1/4 CORNER THEREOF.
- ▲ **PUMP #1 FROM C-4-E**
LOCATED IN THE SW 1/4 SW 1/4 SECTION 27 AND 940 FEET NORTH AND 1575 FEET WEST FROM THE S 1/4 CORNER THEREOF.
- ▲ **PUMP #2 FROM C-4-E**
LOCATED IN THE SW 1/4 NE 1/4 SECTION 34 AND 1740 FEET SOUTH AND 275 FEET EAST FROM THE N 1/4 CORNER THEREOF.
- ▲ **PUMP #3 FROM C-4-E**
LOCATED IN THE SW 1/4 NE 1/4 SECTION 34 AND 1708 FEET SOUTH AND 385 FEET EAST FROM THE N 1/4 CORNER THEREOF.
- ▲ **PUMP #4 FROM LOST RIVER DIVERSION**
LOCATED IN THE SW 1/4 SE 1/4 SECTION 27 AND 180 FEET NORTH AND 9 FEET EAST FROM THE S 1/4 CORNER THEREOF.
- ▲ **PUMP #5 FROM LOST RIVER DIVERSION**
LOCATED IN THE NW 1/4 SW 1/4 SECTION 35 AND 95 FEET SOUTH AND 214 FEET EAST FROM THE NW CORNER THEREOF.
- ▲ **PUMP #6 FROM C-4-E**
LOCATED IN THE NW 1/4 SW 1/4 SECTION 35 AND 3526 FEET SOUTH AND 2 FEET EAST FROM THE NW CORNER THEREOF.
- ▲ **PUMP #7 FROM C-4-E**
LOCATED IN THE NW 1/4 SW 1/4 SECTION 35 AND 3522 FEET SOUTH AND 15 FEET EAST FROM THE NW CORNER THEREOF.
- ▲ **PUMP #8 FROM C-4-A**
LOCATED IN THE SW 1/4 NW 1/4 SECTION 36 AND 57 FEET NORTH AND 35 FEET EAST FROM THE W 1/4 CORNER THEREOF.
- ▲ **PUMP #9 FROM C-4-A**
LOCATED IN THE SW 1/4 NW 1/4 SECTION 36 AND 66 FEET NORTH AND 590 FEET EAST FROM THE W 1/4 CORNER THEREOF.
- ▲ **PUMP #10 FROM C-4-A**
LOCATED IN THE NE 1/4 SE 1/4 SECTION 35 AND 1180 FEET SOUTH AND 32 FEET WEST FROM THE E 1/4 CORNER THEREOF.
- ▲ **PUMP #11 FROM C CANAL**
LOCATED IN THE NE 1/4 SW 1/4 SECTION 36 AND 720 FEET SOUTH AND 1745 FEET EAST FROM THE W 1/4 CORNER THEREOF.
- ▲ **PUMP #12 FROM LOST RIVER DIVERSION**
LOCATED IN THE NE 1/4 NW 1/4 SECTION 36 AND 2565 FEET NORTH AND 1340 FEET EAST FROM THE W 1/4 CORNER THEREOF.
- ▲ **PUMP #13 FROM C-7**
LOCATED IN THE SW 1/4 NE 1/4 SECTION 7 AND 2 FEET NORTH AND 2910 FEET EAST FROM THE W 1/4 CORNER THEREOF.

832.41 PRIMARY IRRIGATION ACRES FROM G-15120, AS SHOWN.

SCALE: 4 INCHES = 1 MILE



RENEWAL DATE: 12/31/2012

COBU MAP #0580

THIS MAP IS FOR THE PURPOSE OF LOCATING A WATER RIGHT ONLY AND HAS NO INTENT TO PROVIDE LEGAL DIMENSIONS OR THE LOCATION OF PROPERTY LINES

PREPARED FOR:

BAIR FARMS
9743 SPRING LAKE ROAD
KLAMATH FALLS, OR 97601

PREPARED BY:



ALL POINTS ENGINEERING AND SURVEYING, INC
P.O. BOX 767 (CRR) TERREBONNE, OR 9776C
(541) 548-5833 www.APEandS.com

0580