

Josephine Co.

SEE 1

TRS:

37s-5w-25-NE/SW

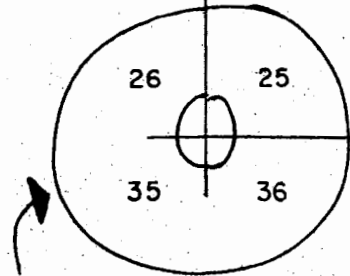


RECEIVED BY OWRD

SEP 14 2016

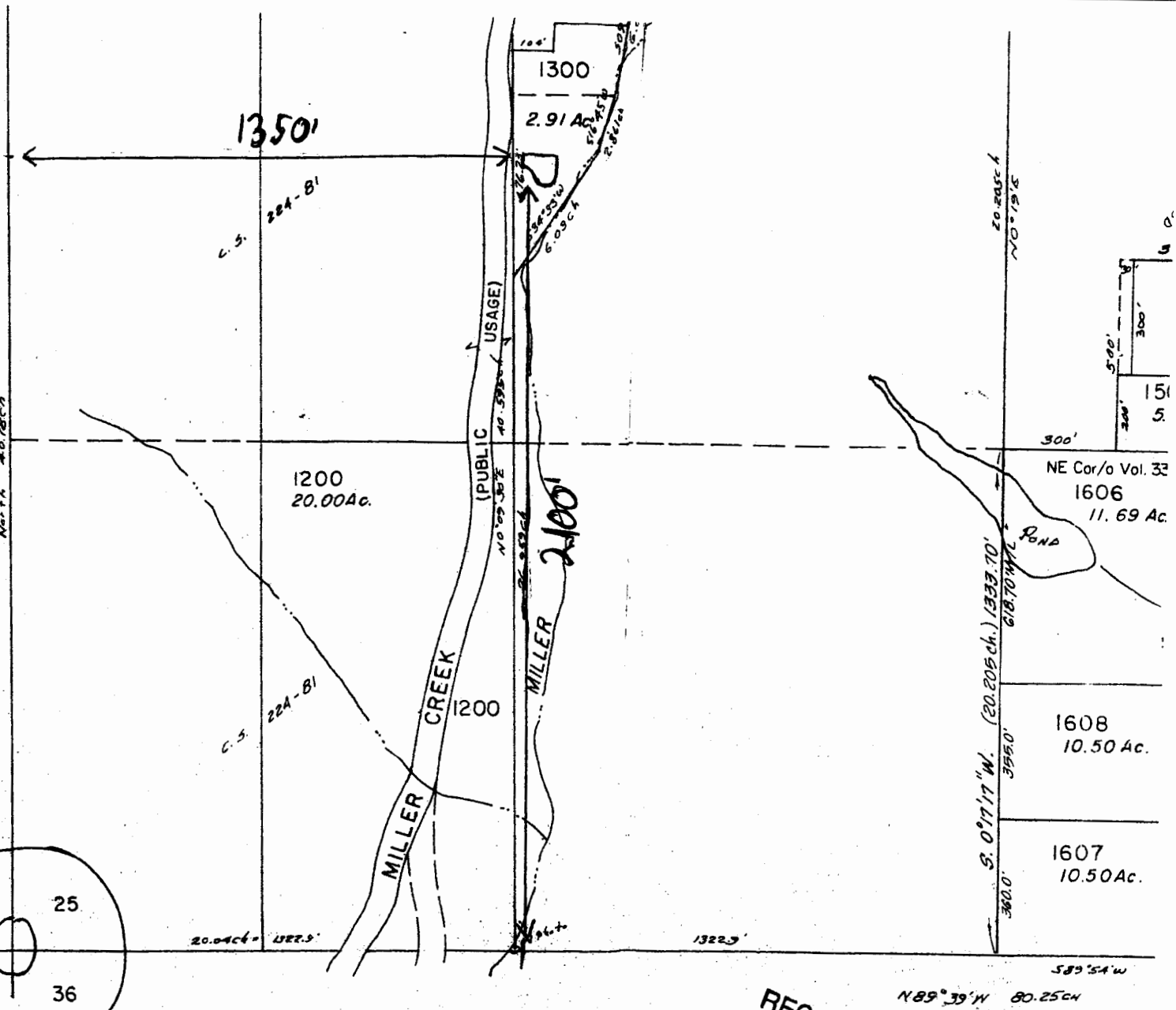
SALEM, OR

1350' East
and
2100' North
of the
SW^{1/4} Corner



SW^{1/4}
Corner

app no R 86408
Permit no R 14277



Scale
1" = 400'

RECEIVED BY OWRD

SEP 26 2016

SALEM, OR

MAP 37 5 36