

FOR ASSESSMENT
AND TAXATION
ONLY

S.W.1/4 SEC.1, T.17S. R.1 E.W.M.
LANE COUNTY

SCALE 1"=500'

SEE MAP 17 15 01

DATE	DESCRIPTION	BY
12/15/01	PREPARED FOR THE COUNTY	12/15/01
12/15/01	FILED FOR RECORD	12/15/01
12/15/01	FILED FOR RECORD	12/15/01
12/15/01	FILED FOR RECORD	12/15/01

17 15 01

NAD 83/91

RECEIVED

AUG 14 2007

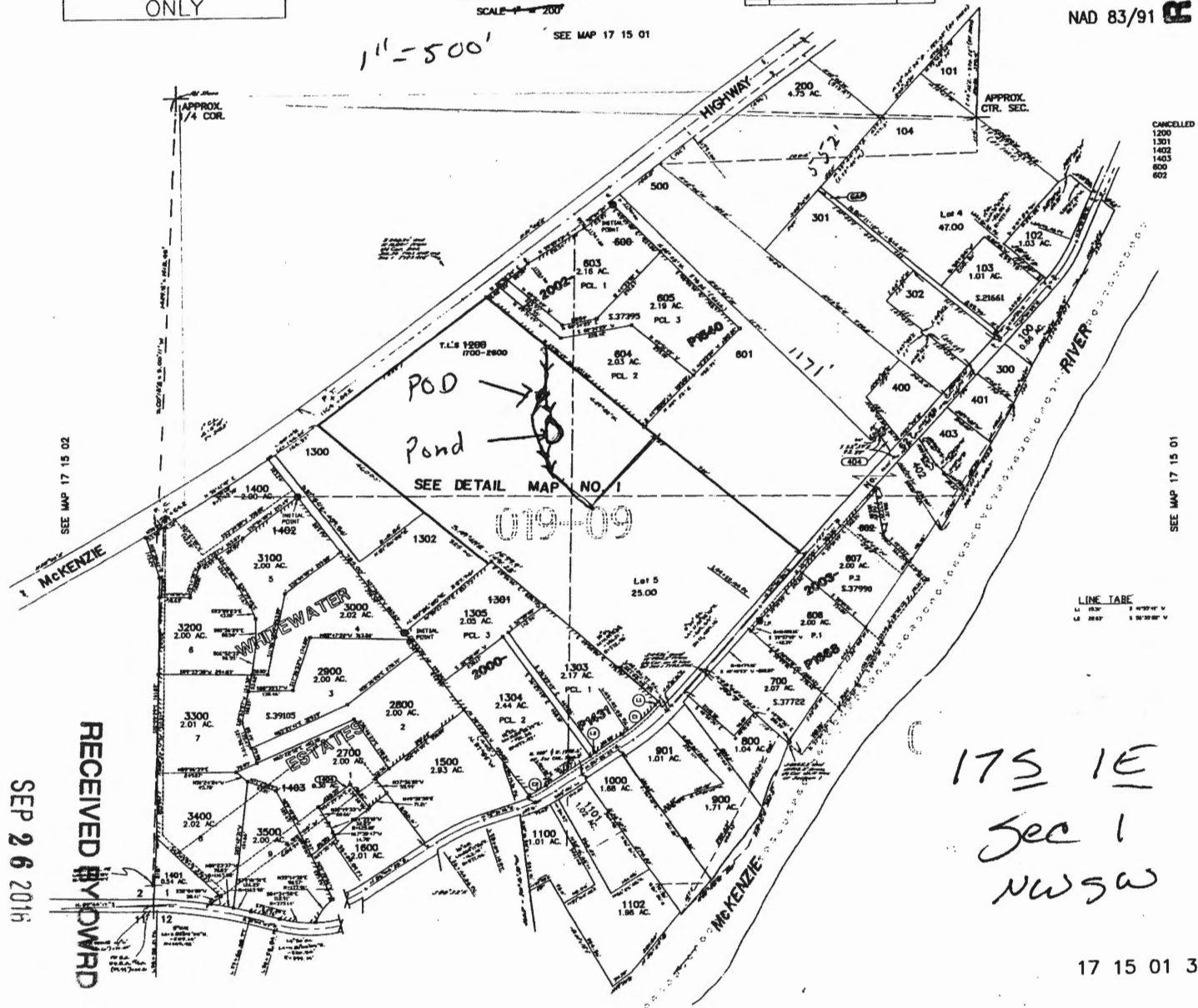
WATER RESOURCES DEPT
SALEM, OREGON

Pond on T2 1900
T 17S R 5 E
section 1
in NW SW

center of Pond
is
1050 ft South
1150 ft East
of
West 1/4 Corner
section 1

Point of
Diversion
is

930' South
and 1120' East
of
West 1/4 Cor
section 1



RECEIVED BY WARD

SEP 26 2016

SALEM, OR

17 15 01 3

SEE MAP 17 15 12