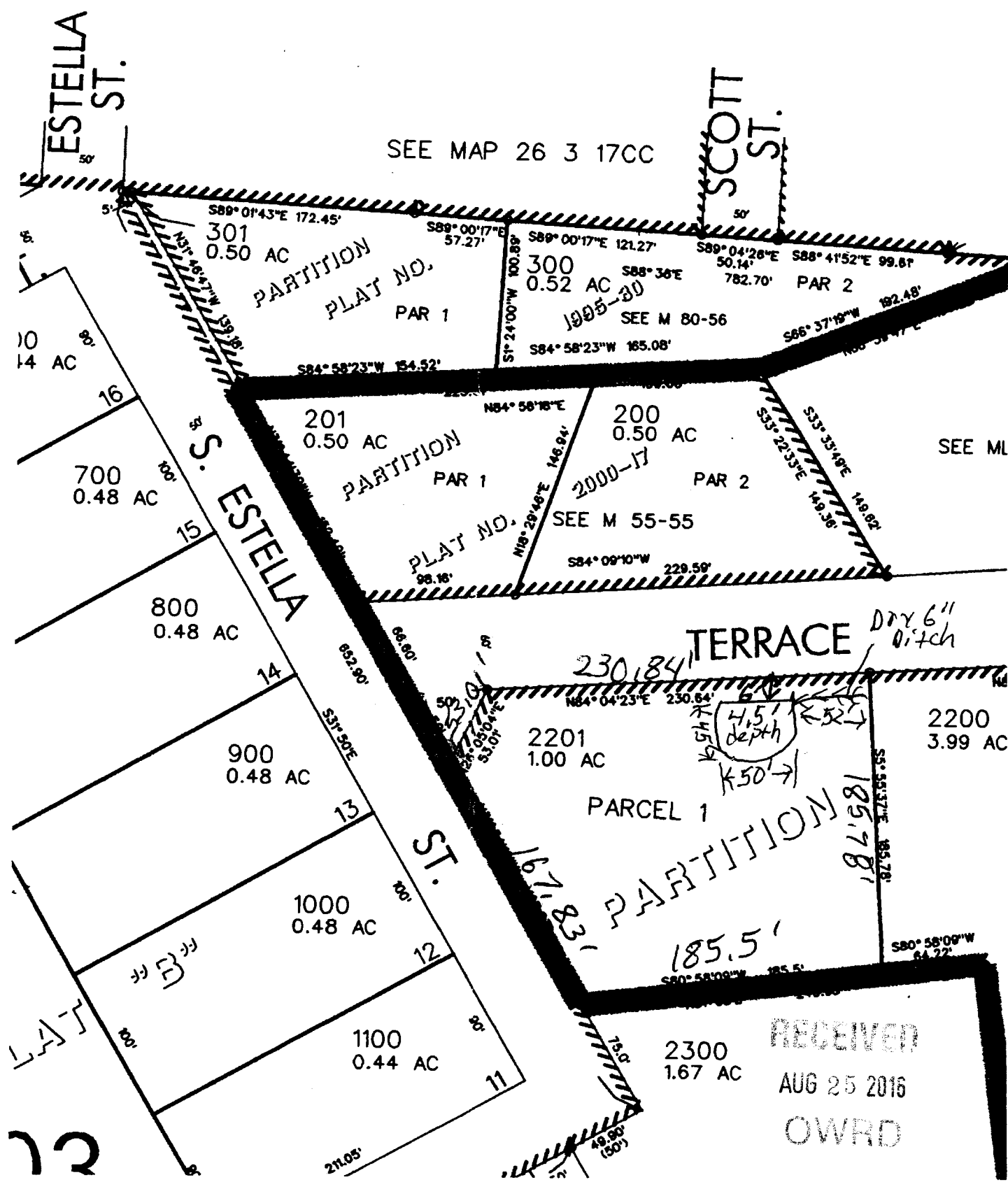


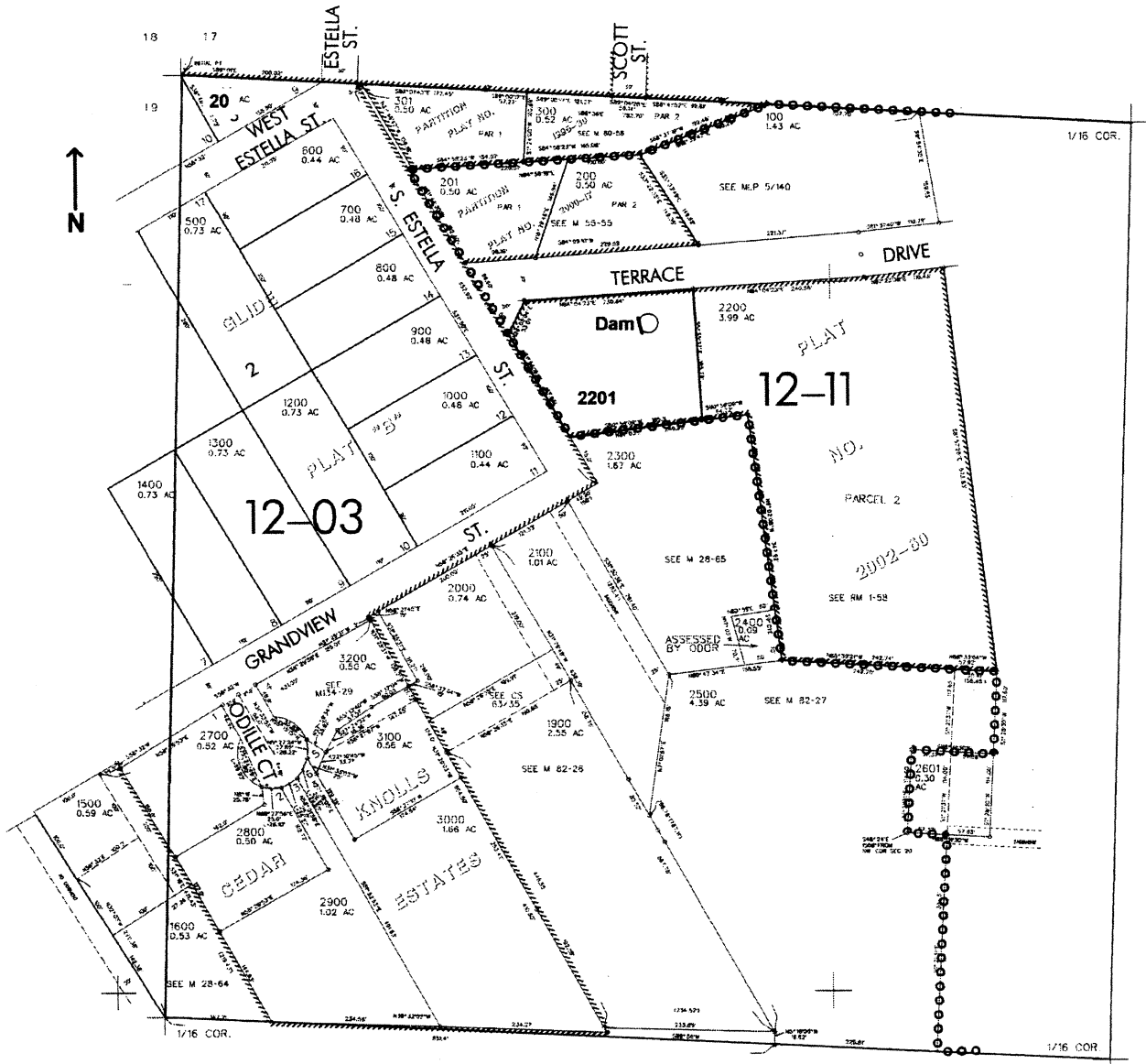
NW1/4 NW1/4 SEC. 20 T.26S. R. 3W.
DOUGLAS COUNTY

1" = 100'



NW1/4 NW1/4 SEC. 20 T.26S. R. 3W. W.M.
DOUGLAS COUNTY

Scale: 1" = 250'



Dam is located 325 ft. S. and 650 ft. E. from the NW corner of Sec. 20

RECEIVED
DEC 15 2006
WATER RESOURCES DEPT
SALEM, OREGON

app no R-86728 PERMIT # R14416