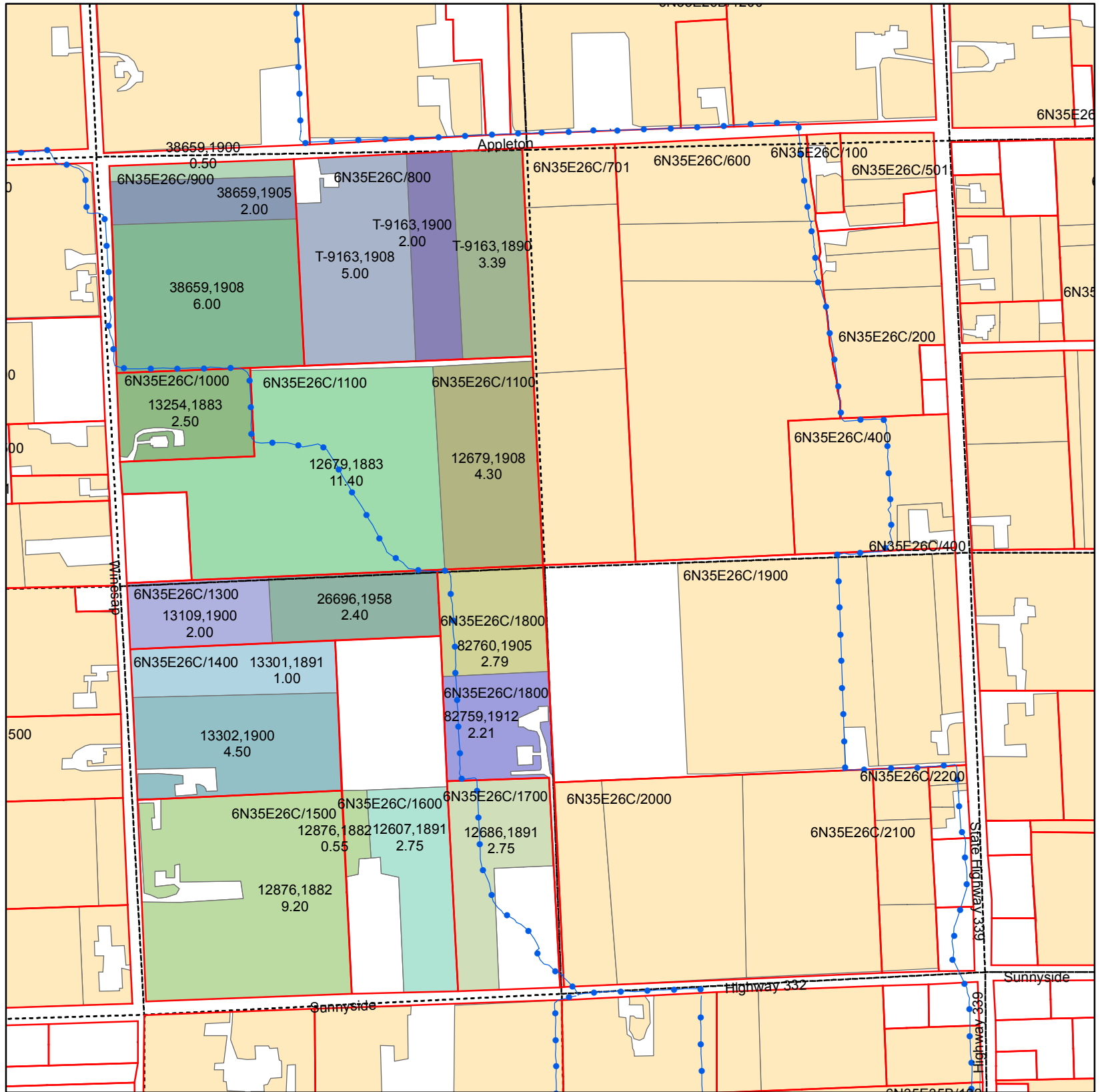


Walla Walla River Irrigation District

3201 Water Rights Map



Primary Certificates

T6N R35E WM Section 26 W1/2 SW Quarter

CERTIFICATE, PRIORITY

- 12607, 1891
- 12679, 1883
- 12679, 1908
- 12686, 1891
- 12876, 1882
- 13109, 1900
- 13254, 1883
- 13301, 1891
- 13302, 1900
- 26696, 1958
- 38659, 1900
- 38659, 1905
- 38659, 1908
- 82759, 1912
- 82760, 1905
- T-9163, 1890
- T-9163, 1900
- T-9163, 1908
- Water Rights Not Within Quarter

| ASSESSORMAP | CERTIFICATE | PRIORITY | QQ | WR ACRES |
|---------------|-------------|----------|------|----------|
| 6N35E26C/1000 | 13254 | 1883 | NWSW | 2.50 |
| 6N35E26C/1100 | 12679 | 1883 | NWSW | 11.40 |
| 6N35E26C/1100 | 12679 | 1908 | NWSW | 4.30 |
| 6N35E26C/1300 | 26696 | 1958 | SWSW | 2.40 |
| 6N35E26C/1300 | 13109 | 1900 | SWSW | 2.00 |
| 6N35E26C/1400 | 13301 | 1891 | SWSW | 1.00 |
| 6N35E26C/1400 | 13302 | 1900 | SWSW | 4.50 |
| 6N35E26C/1500 | 12876 | 1882 | SWSW | 9.20 |
| 6N35E26C/1600 | 12607 | 1891 | SWSW | 2.75 |
| 6N35E26C/1600 | 12876 | 1882 | SWSW | 0.55 |
| 6N35E26C/1700 | 12686 | 1891 | SWSW | 2.75 |
| 6N35E26C/1800 | 82760 | 1905 | SWSW | 2.79 |
| 6N35E26C/1800 | 82759 | 1912 | SWSW | 2.21 |
| 6N35E26C/800 | T-9163 | 1908 | NWSW | 5.00 |
| 6N35E26C/800 | T-9163 | 1890 | NWSW | 3.39 |
| 6N35E26C/800 | T-9163 | 1900 | NWSW | 2.00 |
| 6N35E26C/900 | 38659 | 1900 | NWSW | 0.50 |
| 6N35E26C/900 | 38659 | 1905 | NWSW | 2.00 |
| 6N35E26C/900 | 38659 | 1908 | NWSW | 6.00 |

Legend

- PIPE
- Parcel
- QCDB
- WWRID Boundary

