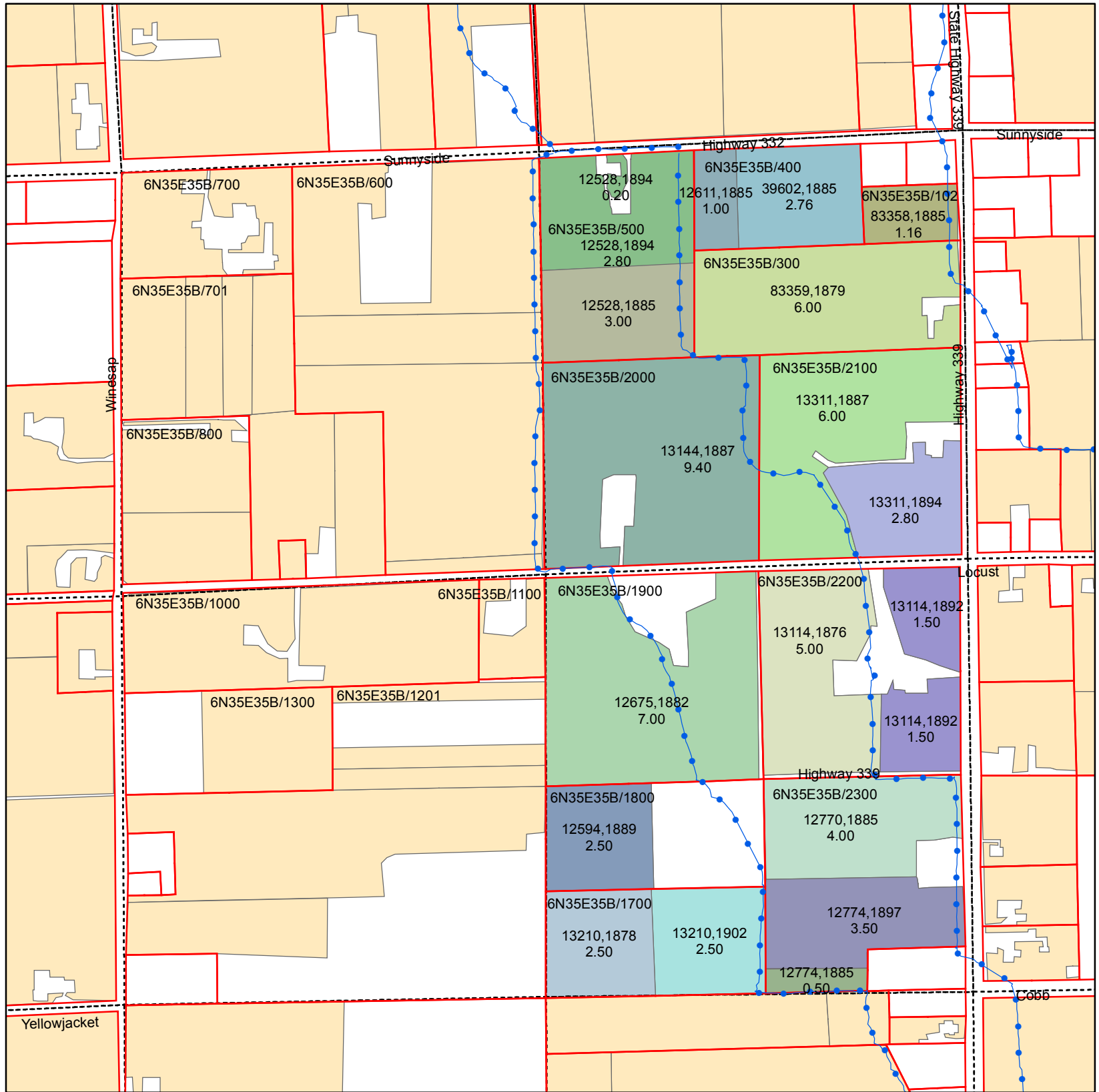


# Walla Walla River Irrigation District

## 3201 Water Rights Map



### Primary Certificates T6N R35E WM Section 35 E1/2 NW Quarter

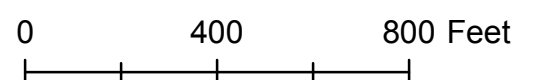
#### CERTIFICATE, PRIORITY

- 12528, 1885
- 12528, 1894
- 12594, 1889
- 12611, 1885
- 12675, 1882
- 12770, 1885
- 12774, 1885
- 12774, 1897
- 13114, 1876
- 13114, 1892
- 13144, 1887
- 13210, 1878
- 13210, 1902
- 13311, 1887
- 13311, 1894
- 39602, 1885
- 83358, 1885
- 83359, 1879
- Water Rights Not Within Quarter

ASSESSORMAP	CERTIFICATE	PRIORITY	QQ	WR ACRES
6N35E35B/102	83358	1885	NENW	1.16
6N35E35B/1700	13210	1902	SEnw	2.50
6N35E35B/1700	13210	1878	SEnw	2.50
6N35E35B/1800	12594	1889	SEnw	2.50
6N35E35B/1900	12675	1882	SEnw	7.00
6N35E35B/2000	13144	1887	NENw	9.40
6N35E35B/2100	13311	1887	NENw	6.00
6N35E35B/2100	13311	1894	NENw	2.80
6N35E35B/2200	13114	1876	SEnw	5.00
6N35E35B/2200	13114	1892	SEnw	1.50
6N35E35B/2200	13114	1892	SEnw	1.50
6N35E35B/2300	12770	1885	SEnw	4.00
6N35E35B/2300	12774	1897	SEnw	3.50
6N35E35B/2300	12774	1885	SEnw	0.50
6N35E35B/300	83359	1879	NENw	6.00
6N35E35B/400	39602	1885	NENw	2.76
6N35E35B/400	12611	1885	NENw	1.00
6N35E35B/500	12528	1894	NENw	0.20
6N35E35B/500	12528	1894	NENw	2.80
6N35E35B/500	12528	1885	NENw	3.00

#### Legend

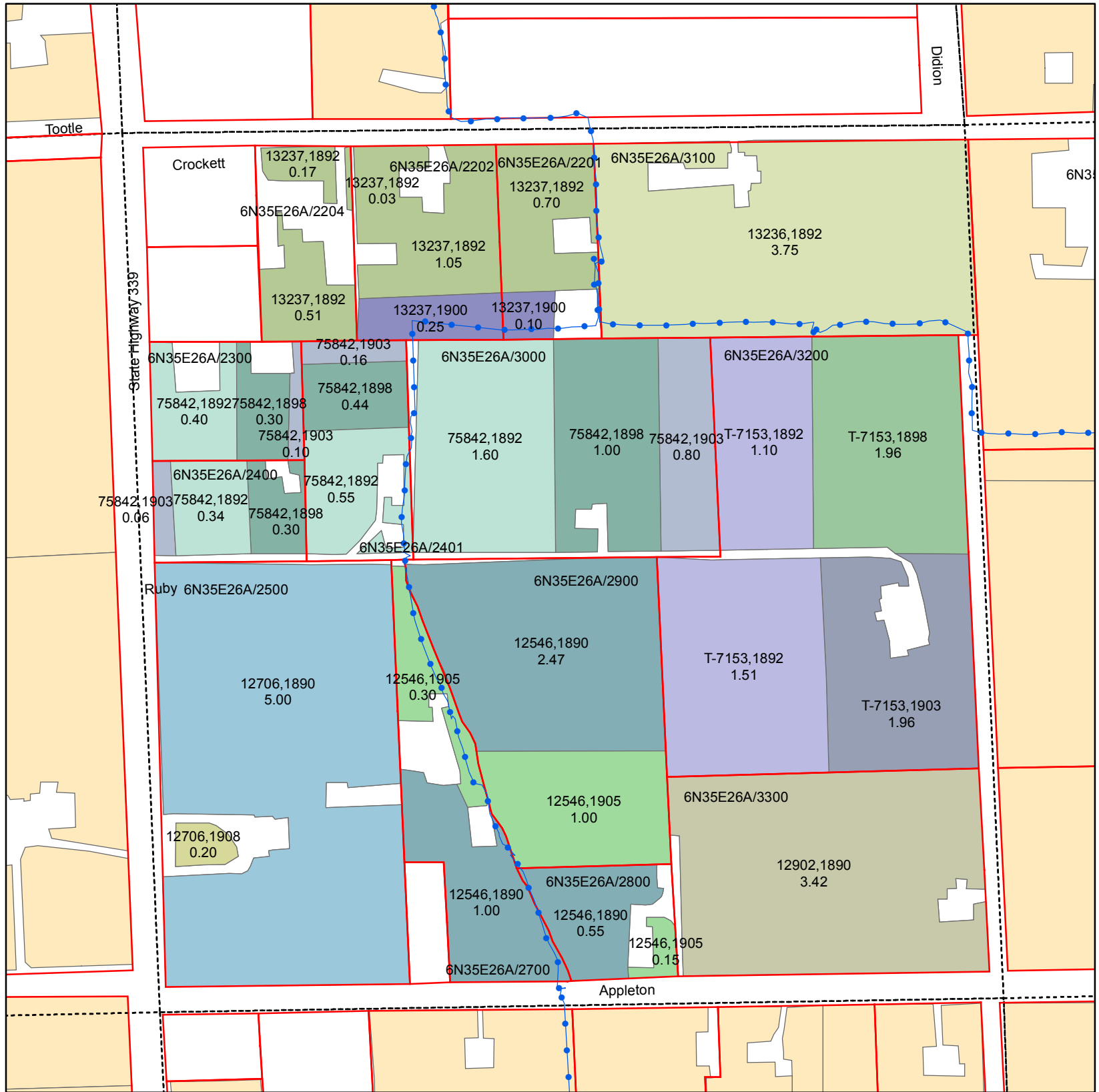
- PIPE
- Parcel
- QCDB
- WWRID Boundary



Date March 2011

# Walla Walla River Irrigation District

## 3201 Water Rights Map



### T6N R35E WM Section 26 SWNE Quarter



#### Primary Certificates

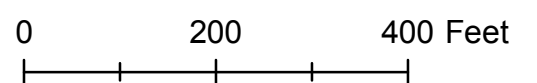
#### CERTIFICATE, PRIORITY

- 12546, 1890
- 12546, 1905
- 12706, 1890
- 12706, 1908
- 12902, 1890
- 13236, 1892
- 13237, 1892
- 13237, 1900
- 75842, 1892
- 75842, 1898
- 75842, 1903
- T-7153, 1892
- T-7153, 1898
- T-7153, 1903
- Water Rights Not Within Quarter

ASSESSORMAP	CERTIFICATE	PRIORITY	QQ	WR ACRES
6N35E26A/2500	12706	1908	SWNE	0.20
6N35E26A/3300	12902	1890	SWNE	3.42
6N35E26A/2500	12706	1890	SWNE	5.00
6N35E26A/3100	13236	1892	SWNE	3.75
6N35E26A/2800	12546	1905	SWNE	0.15
6N35E26A/2800	12546	1890	SWNE	0.55
6N35E26A/3200	T-7153	1898	SWNE	1.96
6N35E26A/3200	T-7153	1903	SWNE	1.96
6N35E26A/2201	13237	1892	SWNE	0.70
6N35E26A/3000	75842	1903	SWNE	0.80
6N35E26A/3000	75842	1898	SWNE	1.00
6N35E26A/3000	75842	1892	SWNE	1.60
6N35E26A/2401	75842	1903	SWNE	0.16
6N35E26A/2401	75842	1898	SWNE	0.44
6N35E26A/2401	75842	1892	SWNE	0.55
6N35E26A/2300	75842	1892	SWNE	0.40
6N35E26A/2300	75842	1903	SWNE	0.10
6N35E26A/2300	75842	1898	SWNE	0.30
6N35E26A/2202	13237	1892	SWNE	1.05
6N35E26A/2202	13237	1900	SWNE	0.25
6N35E26A/2204	13237	1892	SWNE	0.51
6N35E26A/2204	13237	1892	SWNE	0.17
6N35E26A/2700	12546	1890	SWNE	1.00
6N35E26A/2700	12546	1905	SWNE	0.30
6N35E26A/2400	75842	1898	SWNE	0.30
6N35E26A/2400	75842	1903	SWNE	0.06
6N35E26A/2400	75842	1892	SWNE	0.34
6N35E26A/2900	12546	1890	SWNE	2.47
6N35E26A/2900	12546	1905	SWNE	1.00
6N35E26A/2204	13237	1892	SWNE	0.03
6N35E26A/2201	13237	1900	SWNE	0.10
6N35E26A/3200	T-7153	1892	SWNE	1.10
6N35E26A/3200	T-7153	1892	SWNE	1.51

#### Legend

- PIPE
- Parcel
- QCDB
- WWRID Boundary



Date March 2011