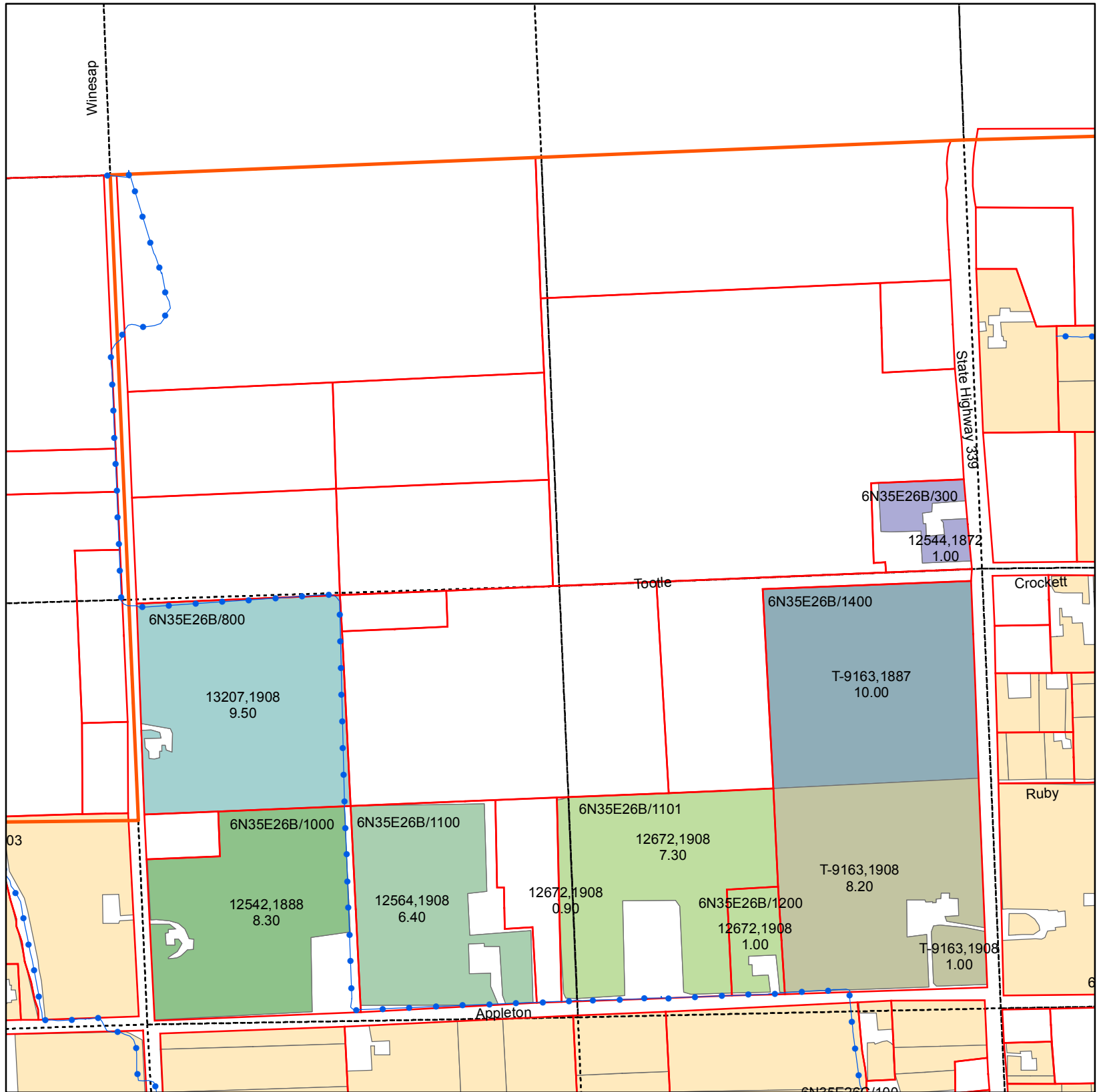


Walla Walla River Irrigation District

3201 Water Rights Map



T6N R35E WM Section 26 NW Quarter



ASSESSORMAP	CERTIFICATE	PRIORITY	QQ	WR ACRES
6N35E26B/1400	T-9163	1908	NWSE	1.00
6N35E26B/1200	12672	1908	SENW	1.00
6N35E26B/1000	12542	1888	SWNW	8.30
6N35E26B/1101	12672	1908	SWNW	0.90
6N35E26B/1100	12564	1908	SWNW	6.40
6N35E26B/1101	12672	1908	SENW	7.30
6N35E26B/800	13207	1908	SWNW	9.50
6N35E26B/300	12544	1872	NENW	1.00
6N35E26B/1400	T-9163	1887	SENW	10.00
6N35E26B/1400	T-9163	1908	SENW	8.20

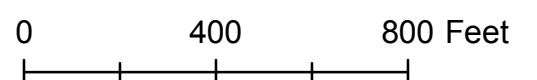
Primary Certificates

CERTIFICATE, PRIORITY

- 12542, 1888
- 12544, 1872
- 12564, 1908
- 12672, 1908
- 13207, 1908
- T-9163, 1887
- T-9163, 1908
- Water Rights Not Within Quarter

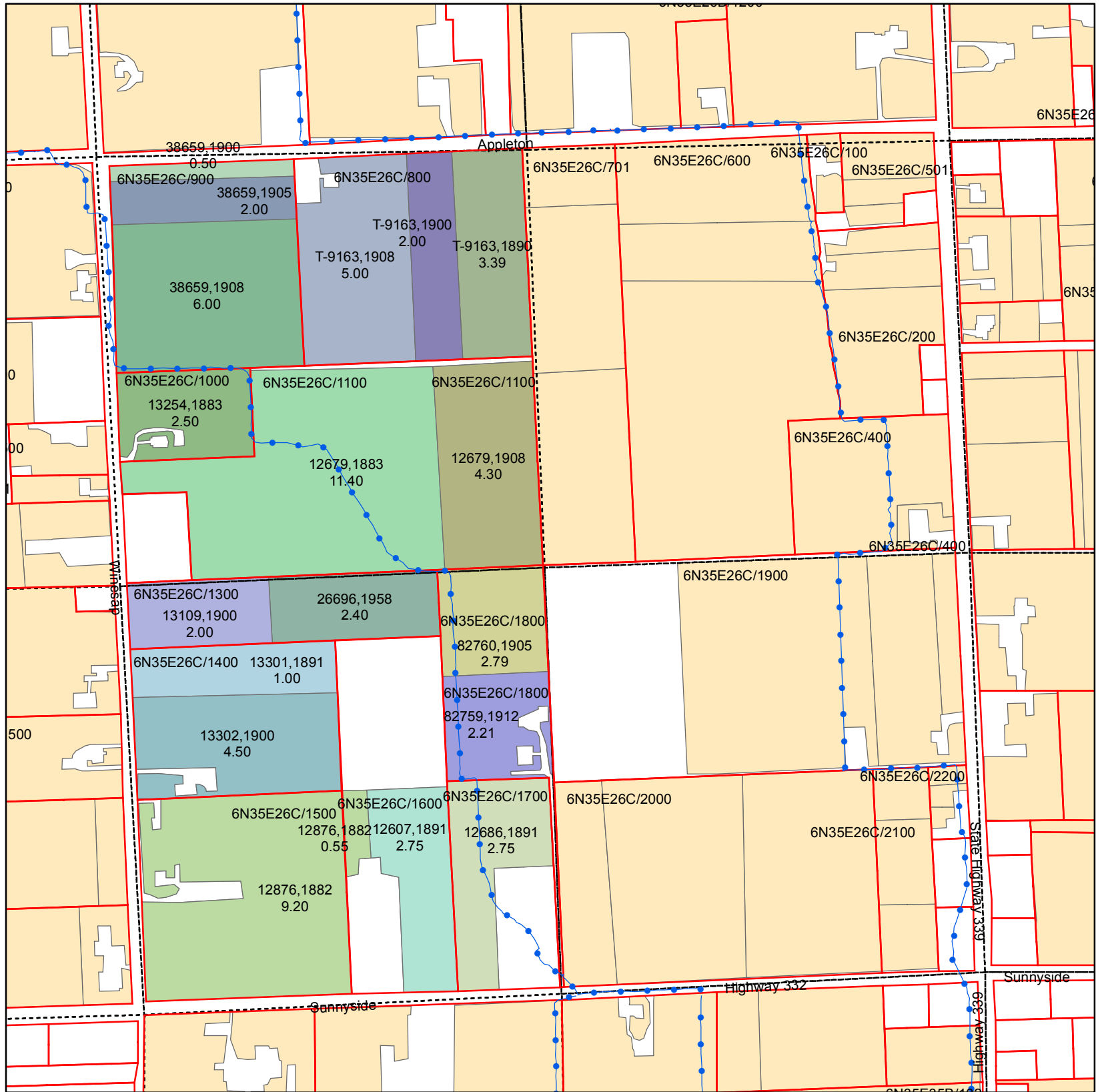
Legend

- PIPE
- Parcel
- QCDB
- WWRID Boundary



Walla Walla River Irrigation District

3201 Water Rights Map



Primary Certificates

T6N R35E WM Section 26 W1/2 SW Quarter

CERTIFICATE, PRIORITY

- 12607, 1891
- 12679, 1883
- 12679, 1908
- 12686, 1891
- 12876, 1882
- 13109, 1900
- 13254, 1883
- 13301, 1891
- 13302, 1900
- 26696, 1958
- 38659, 1900
- 38659, 1905
- 38659, 1908
- 82759, 1912
- 82760, 1905
- T-9163, 1890
- T-9163, 1900
- T-9163, 1908
- Water Rights Not Within Quarter

ASSESSORMAP	CERTIFICATE	PRIORITY	QQ	WR ACRES
6N35E26C/1000	13254	1883	NWSW	2.50
6N35E26C/1100	12679	1883	NWSW	11.40
6N35E26C/1100	12679	1908	NWSW	4.30
6N35E26C/1300	26696	1958	SWSW	2.40
6N35E26C/1300	13109	1900	SWSW	2.00
6N35E26C/1400	13301	1891	SWSW	1.00
6N35E26C/1400	13302	1900	SWSW	4.50
6N35E26C/1500	12876	1882	SWSW	9.20
6N35E26C/1600	12607	1891	SWSW	2.75
6N35E26C/1600	12876	1882	SWSW	0.55
6N35E26C/1700	12686	1891	SWSW	2.75
6N35E26C/1800	82760	1905	SWSW	2.79
6N35E26C/1800	82759	1912	SWSW	2.21
6N35E26C/800	T-9163	1908	NWSW	5.00
6N35E26C/800	T-9163	1890	NWSW	3.39
6N35E26C/800	T-9163	1900	NWSW	2.00
6N35E26C/900	38659	1900	NWSW	0.50
6N35E26C/900	38659	1905	NWSW	2.00
6N35E26C/900	38659	1908	NWSW	6.00

Legend

- PIPE
- Parcel
- QCDB
- WWRID Boundary

