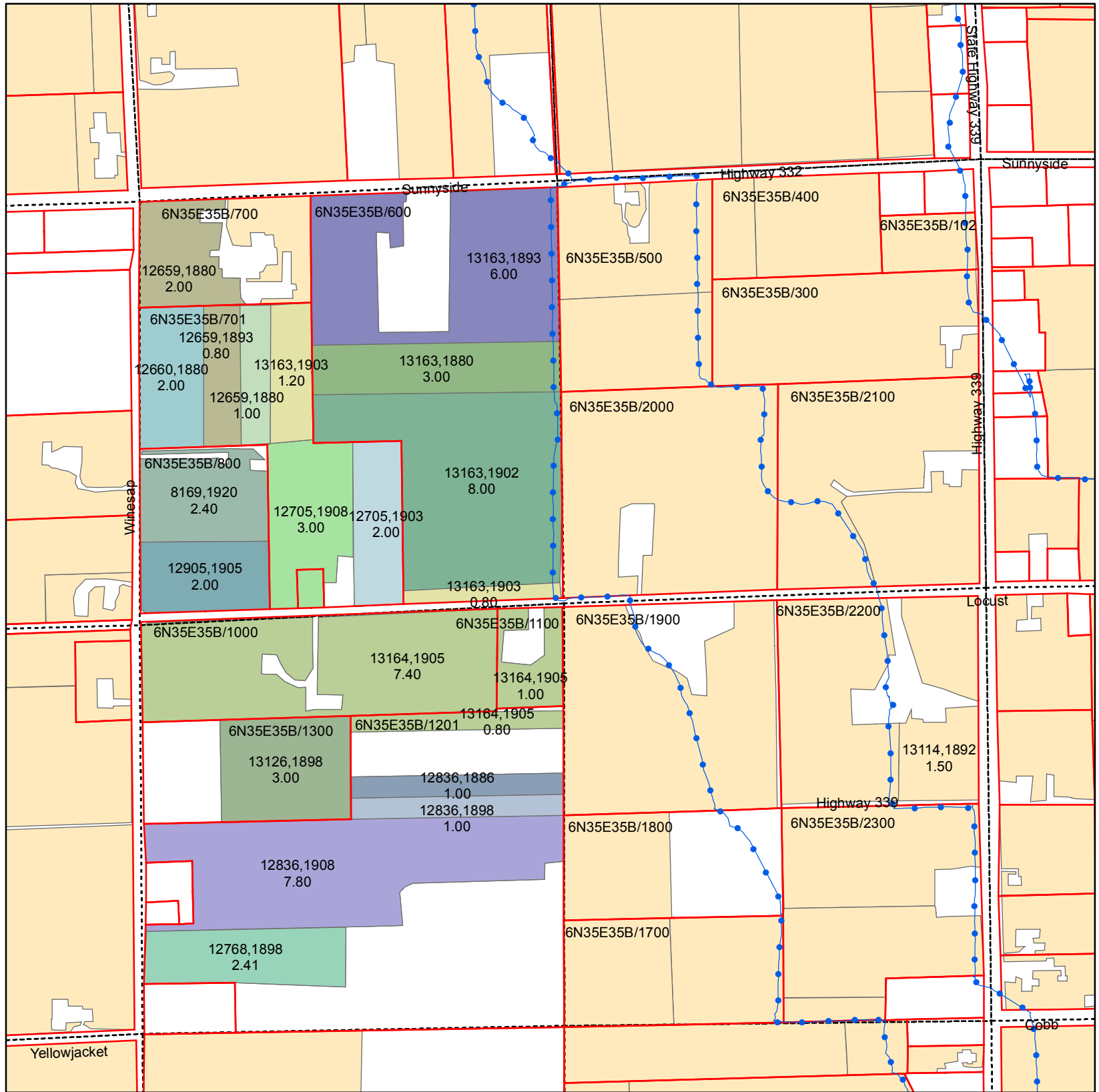


Walla Walla River Irrigation District

3201 Water Rights Map



T6N R35E WM Section 35 W1/2 NW Quarter

Primary Certificates

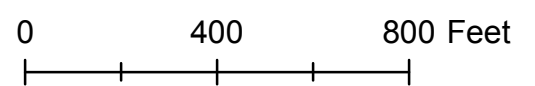
CERTIFICATE, PRIORITY

- 12659, 1880
- 12659, 1893
- 12660, 1880
- 12705, 1903
- 12705, 1908
- 12768, 1898
- 12836, 1886
- 12836, 1898
- 12836, 1908
- 12905, 1905
- 13126, 1898
- 13163, 1880
- 13163, 1893
- 13163, 1902
- 13163, 1903
- 13164, 1905
- 8169, 1920
- Water Rights Not Within Quarter

ASSESSORMAP	CERTIFICATE	PRIORITY	QQ	WR ACRES
6N35E35B/1000	13164	1905	SWNW	7.40
6N35E35B/1100	13164	1905	SWNW	1.00
6N35E35B/1201	12836	1908	SWNW	7.80
6N35E35B/1201	13164	1905	SWNW	0.80
6N35E35B/1201	12836	1886	SWNW	1.00
6N35E35B/1201	12836	1898	SWNW	1.00
6N35E35B/1201	12768	1898	SWNW	2.41
6N35E35B/1300	13126	1898	SWNW	3.00
6N35E35B/600	13163	1893	NWNW	6.00
6N35E35B/600	13163	1880	NWNW	3.00
6N35E35B/600	13163	1902	NWNW	8.00
6N35E35B/600	13163	1903	NWNW	0.80
6N35E35B/700	12659	1880	NWNW	2.00
6N35E35B/700	12659	1893	NWNW	1.20
6N35E35B/701	12659	1880	NWNW	1.00
6N35E35B/701	12705	1908	NWNW	3.00
6N35E35B/701	12705	1903	NWNW	2.00
6N35E35B/701	12660	1880	NWNW	2.00
6N35E35B/701	12659	1893	NWNW	0.80
6N35E35B/701	13163	1903	NWNW	1.20
6N35E35B/800	8169	1920	NWNW	2.40
6N35E35B/800	12905	1905	NWNW	2.00

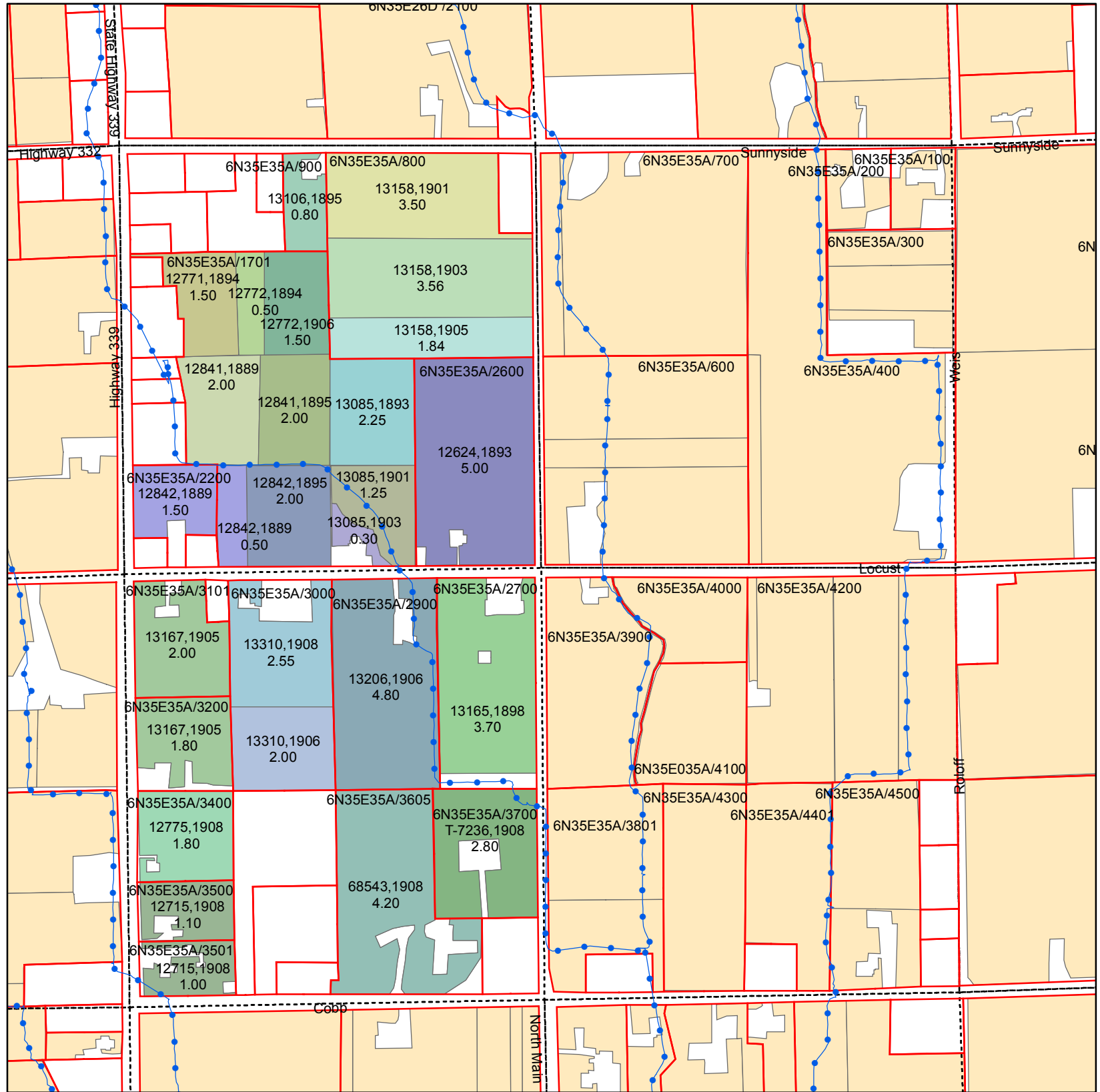
Legend

- PIPE
- Parcel
- QCDB
- WWRID Boundary



Walla Walla River Irrigation District

3201 Water Rights Map



T6N R35E WM Section 35 W1/2 NE Quarter

Primary Certificates

CERT, PRIORITY

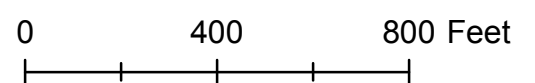
- 12624, 1893
- 12715, 1908
- 12771, 1894
- 12772, 1894
- 12772, 1906
- 12775, 1908
- 12841, 1889
- 12841, 1895
- 12842, 1889
- 12842, 1895
- 13085, 1893
- 13085, 1901
- 13085, 1903
- 13106, 1895
- 13158, 1901
- 13158, 1903
- 13158, 1905
- 13165, 1898
- 13167, 1905
- 13206, 1906
- 13310, 1906
- 13310, 1908
- 68543, 1908
- T-7236, 1908
- Water Rights Not Within Quarter

ASSESSORMAP	CERTIFICATE	PRIORITY	QQ	WR ACRES
6N35E35A/1701	12772	1906	NWNE	1.50
6N35E35A/1701	12842	1895	NWNE	2.00
6N35E35A/1701	12842	1889	NWNE	0.50
6N35E35A/1701	12772	1894	NWNE	0.50
6N35E35A/1701	12841	1889	NWNE	2.00
6N35E35A/1701	12841	1895	NWNE	2.00
6N35E35A/1701	12771	1894	NWNE	1.50
6N35E35A/1701	13085	1903	NWNE	0.30
6N35E35A/1701	13085	1901	NWNE	1.25
6N35E35A/1701	13085	1893	NWNE	2.25
6N35E35A/2200	12842	1889	NWNE	1.50
6N35E35A/2600	12624	1893	NWNE	5.00
6N35E35A/2700	13165	1898	SWNE	3.70
6N35E35A/2900	13206	1906	SWNE	4.80
6N35E35A/3000	13310	1908	SWNE	2.55
6N35E35A/3000	13310	1906	SWNE	2.00
6N35E35A/3101	13167	1905	SWNE	2.00
6N35E35A/3200	13167	1905	SWNE	1.80
6N35E35A/3400	12775	1908	SWNE	1.80
6N35E35A/3500	12715	1908	SWNE	1.10
6N35E35A/3501	12715	1908	SWNE	1.00
6N35E35A/3605	68543	1908	SWNE	4.20
6N35E35A/3700	T-7236	1908	SWNE	2.80
6N35E35A/800	13158	1901	NWNE	3.50
6N35E35A/800	13158	1903	NWNE	3.56
6N35E35A/800	13158	1905	NWNE	1.84
6N35E35A/900	13106	1895	NWNE	0.80



Legend

- PIPE
- Parcel
- QCDB
- WWRID Boundary



Date March 2011