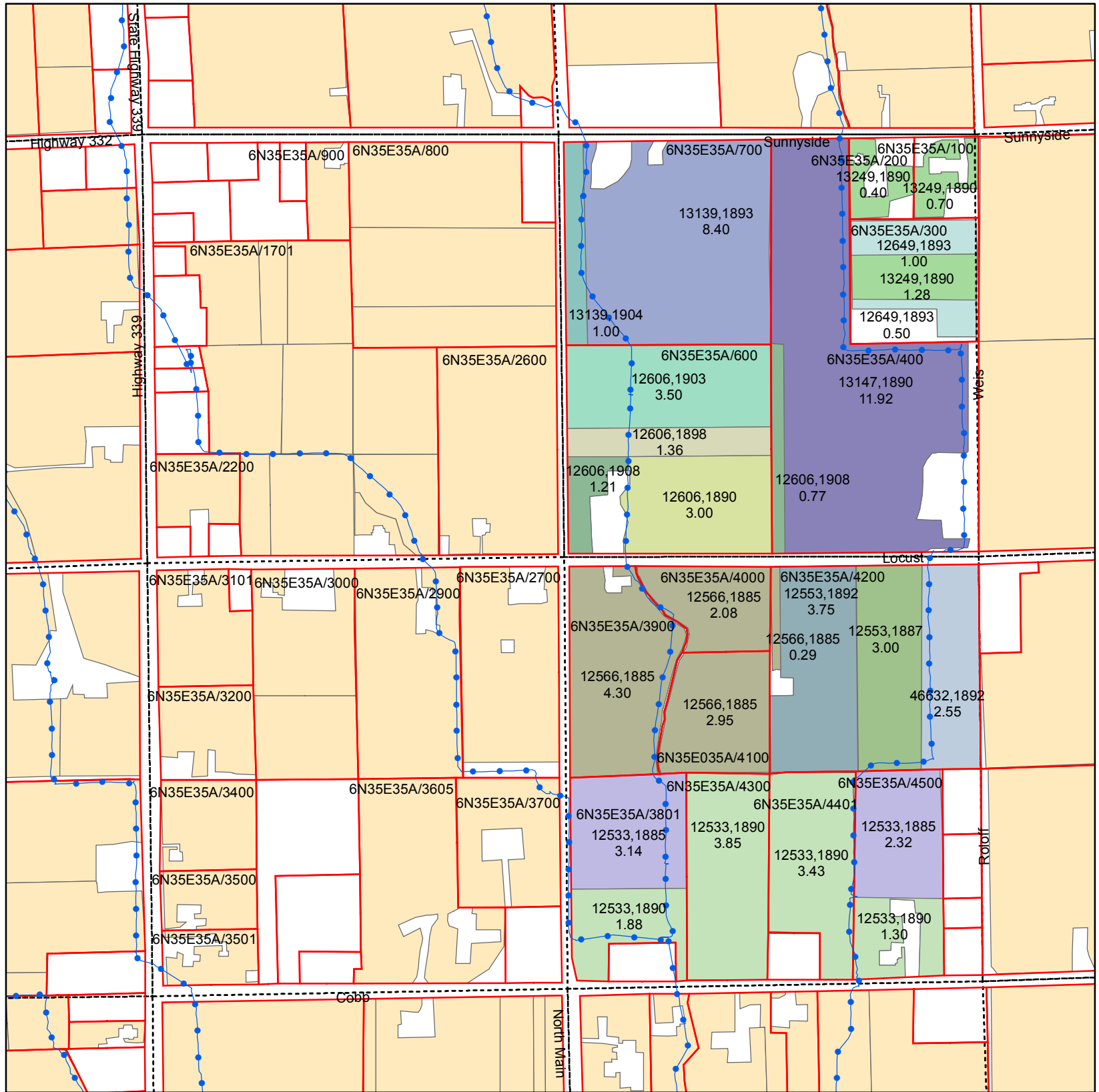


Walla Walla River Irrigation District

3201 Water Rights Map



T6N R35E WM Section 35 E1/2 NE Quarter

Primary Certificates

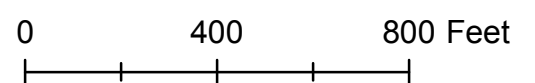
CERTIFICATE, PRIORITY

- 12533, 1885
- 12533, 1890
- 12553, 1887
- 12553, 1892
- 12566, 1885
- 12606, 1890
- 12606, 1898
- 12606, 1903
- 12606, 1908
- 12649, 1893
- 13139, 1893
- 13139, 1904
- 13147, 1890
- 13249, 1890
- 46632, 1892
- Water Rights Not Within Quarter

ASSESSORMAP	CERTIFICATE	PRIORITY	QQ	WR ACRES
6N35E35A/100	13249	1890	NENE	0.70
6N35E35A/200	13249	1890	NENE	0.40
6N35E35A/300	13249	1890	NENE	1.28
6N35E35A/300	12649	1893	NENE	1.00
6N35E35A/300	12649	1893	NENE	0.50
6N35E35A/3801	12533	1885	SENE	3.14
6N35E35A/3801	12533	1890	SENE	1.88
6N35E35A/3900	12566	1885	SENE	4.30
6N35E35A/400	13147	1890	NENE	11.92
6N35E35A/400	12606	1908	NENE	0.77
6N35E35A/4000	12566	1885	SENE	2.08
6N35E35A/4100	12566	1885	SENE	2.95
6N35E35A/4200	46632	1892	SENE	2.55
6N35E35A/4200	12553	1887	SENE	3.00
6N35E35A/4200	12553	1892	SENE	3.75
6N35E35A/4200	12566	1885	SENE	0.29
6N35E35A/4300	12533	1890	SENE	3.85
6N35E35A/4401	12533	1890	SENE	3.43
6N35E35A/4500	12533	1885	SENE	2.32
6N35E35A/4500	12533	1890	SENE	1.30
6N35E35A/600	12606	1903	NENE	3.50
6N35E35A/600	12606	1898	NENE	1.36
6N35E35A/600	12606	1890	NENE	3.00
6N35E35A/600	12606	1908	NENE	1.21
6N35E35A/700	13139	1893	NENE	8.40
6N35E35A/700	13139	1904	NENE	1.00

Legend

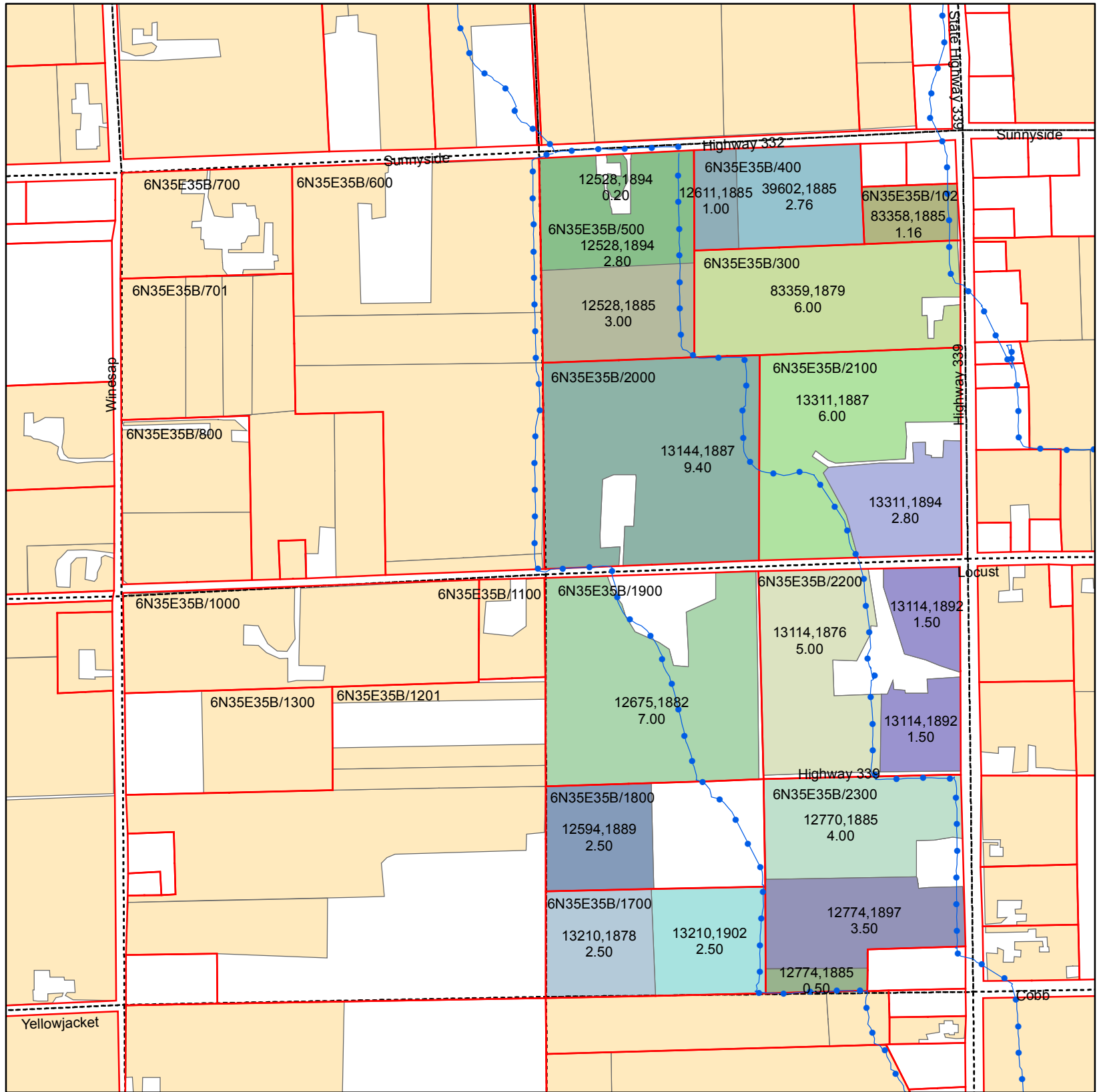
- PIPE
- Parcel
- QCDB
- WWRID Boundary



Date March 2011

Walla Walla River Irrigation District

3201 Water Rights Map



Primary Certificates T6N R35E WM Section 35 E1/2 NW Quarter

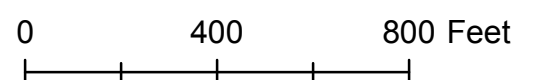
CERTIFICATE, PRIORITY

- 12528, 1885
- 12528, 1894
- 12594, 1889
- 12611, 1885
- 12675, 1882
- 12770, 1885
- 12774, 1885
- 12774, 1897
- 13114, 1876
- 13114, 1892
- 13144, 1887
- 13210, 1878
- 13210, 1902
- 13311, 1887
- 13311, 1894
- 39602, 1885
- 83358, 1885
- 83359, 1879
- Water Rights Not Within Quarter

ASSESSORMAP	CERTIFICATE	PRIORITY	QQ	WR ACRES
6N35E35B/102	83358	1885	NENW	1.16
6N35E35B/1700	13210	1902	SEnw	2.50
6N35E35B/1700	13210	1878	SEnw	2.50
6N35E35B/1800	12594	1889	SEnw	2.50
6N35E35B/1900	12675	1882	SEnw	7.00
6N35E35B/2000	13144	1887	NENw	9.40
6N35E35B/2100	13311	1887	NENw	6.00
6N35E35B/2100	13311	1894	NENw	2.80
6N35E35B/2200	13114	1876	SEnw	5.00
6N35E35B/2200	13114	1892	SEnw	1.50
6N35E35B/2200	13114	1892	SEnw	1.50
6N35E35B/2300	12770	1885	SEnw	4.00
6N35E35B/2300	12774	1897	SEnw	3.50
6N35E35B/2300	12774	1885	SEnw	0.50
6N35E35B/300	83359	1879	NENw	6.00
6N35E35B/400	39602	1885	NENw	2.76
6N35E35B/400	12611	1885	NENw	1.00
6N35E35B/500	12528	1894	NENw	0.20
6N35E35B/500	12528	1894	NENw	2.80
6N35E35B/500	12528	1885	NENw	3.00

Legend

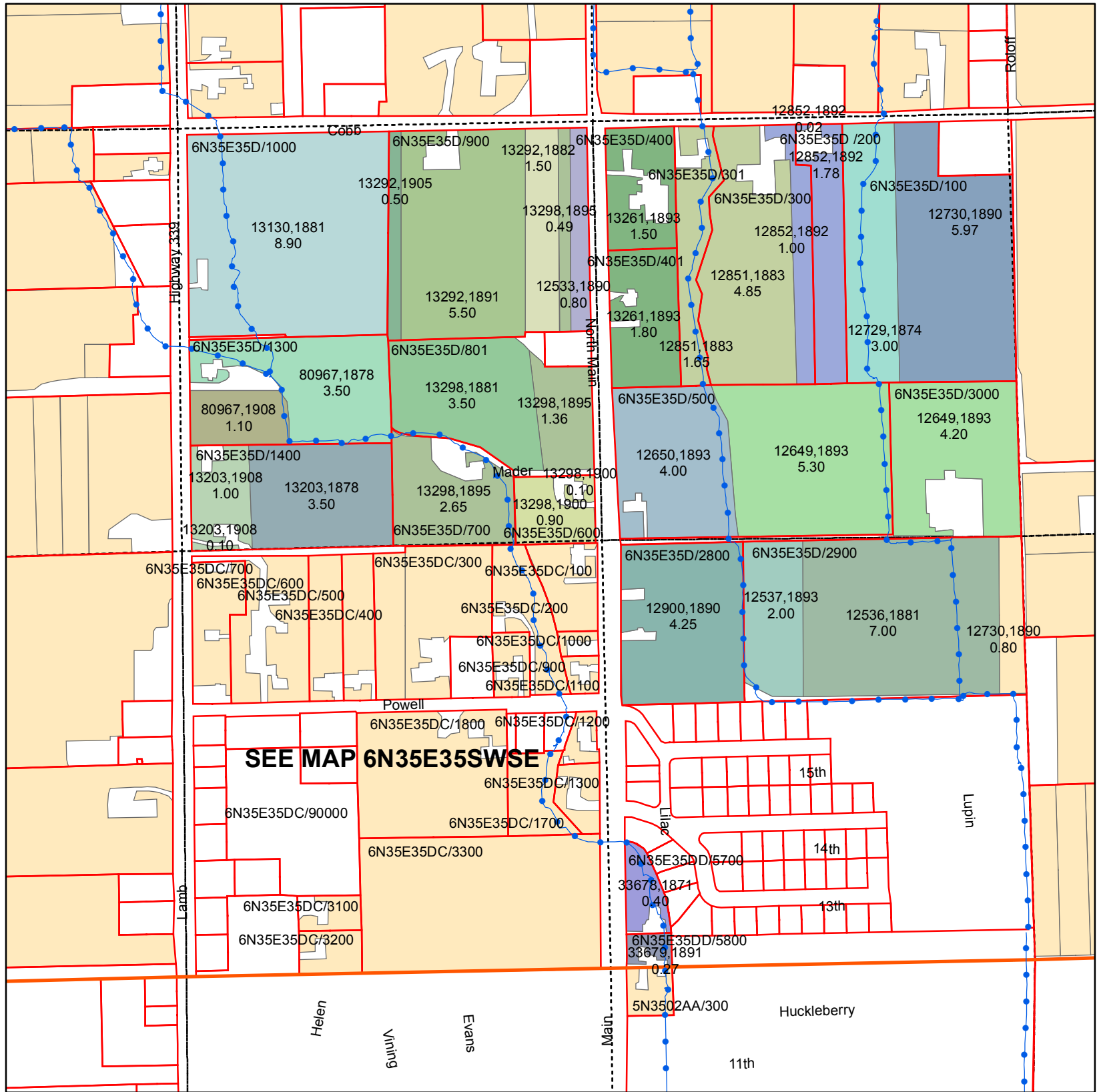
- PIPE
- Parcel
- QCDB
- WWRID Boundary



Date March 2011

Walla Walla River Irrigation District

3201 Water Rights Map



T6N R35E WM Section 35 SE Quarter

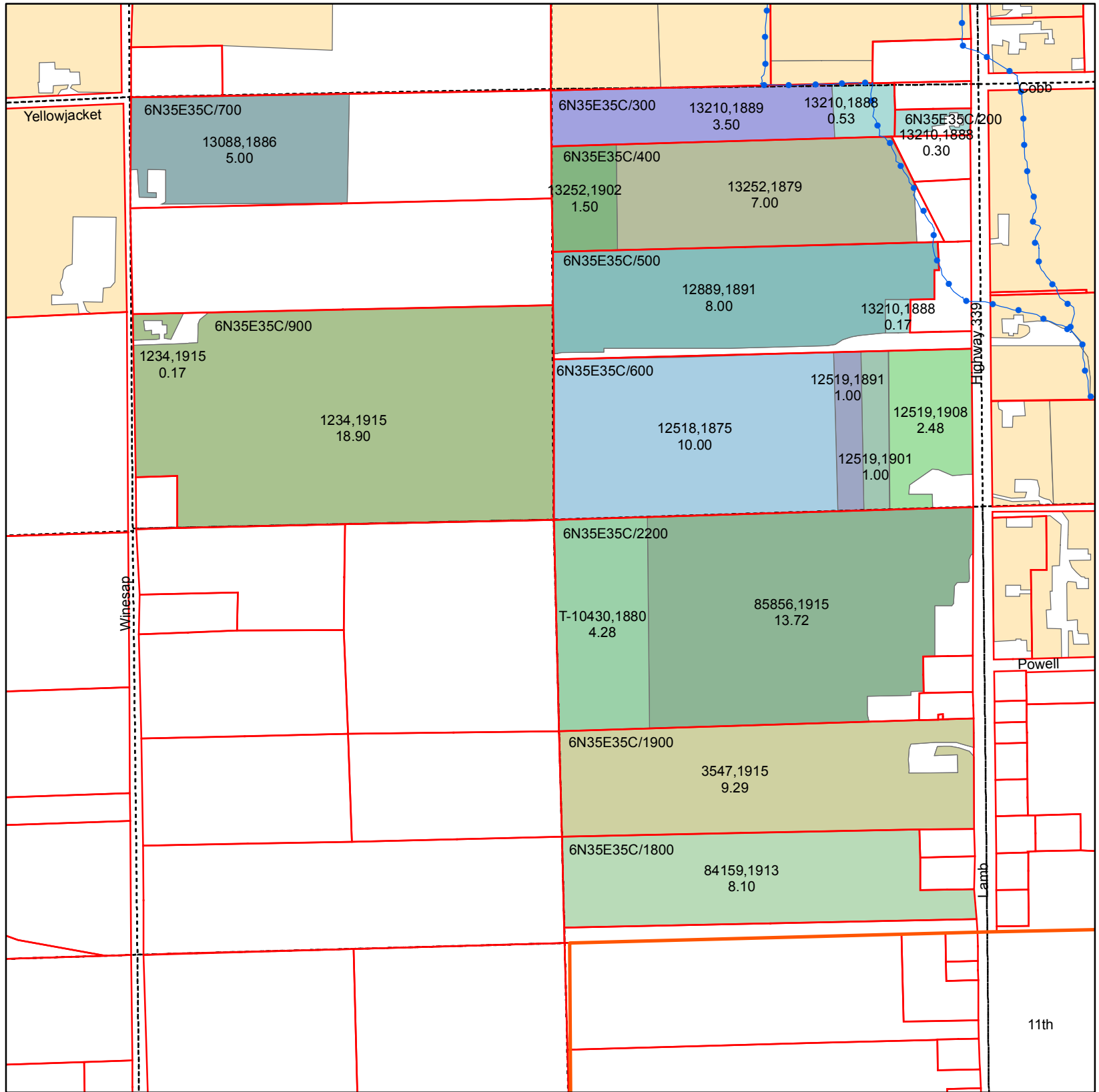
Primary Certificates

CERTIFICATE, PRIORITY

- 12533, 1890
- 12536, 1881
- 12537, 1893
- 12649, 1893
- 12650, 1893
- 12729, 1874
- 12730, 1890
- 12851, 1883
- 12852, 1892
- 12900, 1890
- 13130, 1881
- 13203, 1878
- 13203, 1908
- 13261, 1893
- 13292, 1882
- 13292, 1891
- 13292, 1905
- 13298, 1881
- 13298, 1895
- 13298, 1900
- 13298, 1900
- 13298, 1900
- 13298, 1900
- 13298, 1900
- 13298, 1900
- 13298, 1900
- 13298, 1900
- 13298, 1900
- 13298, 1900
- 13298, 1900
- 13298, 1900
- 13298, 1900
- 13298, 1900
- 13298, 1900
- 13298, 1900
- 13298, 1900
- 13298, 1900
- 13298, 1900
- 13298, 1900
- 13298, 1900
- 13298, 1900
- 13298, 1900
- 13298, 1900
- 13298, 1900
- 13298, 1900
- 13298, 1900
- 13298, 1900
- 13298, 1900
- 13298, 1900
- 13298, 1900
- 13298, 1900
- 13298, 1900
- 13298, 1900
- 13298, 1900
- 13298, 1900
- 13298, 1900
- 13298, 1900
- 13298, 1900
- 13298, 1900
- 13298, 1900
- 13298, 1900
- 13298, 1900
- 13298, 1900
- 13298, 1900
- 13298, 1900
- 13298, 1900
- 13298, 1900
- 13298, 1900
- 13298, 1900
- 13298, 1900
- 13298, 1900
- 13298, 1900
- 13298, 1900
- 13298, 1900
- 13298, 1900
- 13298, 1900
- 13298, 1900
- 13298, 1900
- 13298, 1900
- 13298, 1900
- 13298, 1900
- 13298, 1900
- 13298, 1900
- 13298, 1900
- 13298, 1900
- 13298, 1900
- 13298, 1900
- 13298, 1900
- 13298, 1900
- 13298, 1900
- 13298, 1900
- 13298, 1900
- 13298, 1900
- 13298, 1900
- 13298, 1900
- 13298, 1900
- 13298, 1900
- 13298, 1900
- 13298, 1900
- 13298, 1900
- 13298, 1900
- 13298, 1900
- 13298, 1900
- 13298, 1900
- 13298, 1900
- 13298, 1900
- 13298, 1900
- 13298, 1900
- 13298, 1900
- 13298, 1900
- 13298, 1900
- 13298, 1900
- 13298, 1900
- 13298, 1900
- 13298, 1900
- 13298, 1900
- 13298, 1900
- 13298, 1900
- 13298, 1900
- 13298, 1900
- 13298, 1900
- 13298, 1900
- 13298, 1900
- 13298, 1900
- 13298, 1900
- 13298, 1900
- 13298, 1900
- 13298, 1900
- 13298, 1900
- 13298, 1900
- 13298, 1900
- 13298, 1900
- 13298, 1900
- 13298, 1900
- 13298, 1900
- 13298, 1900
- 13298, 1900
- 13298, 1900
- 13298, 1900
- 13298, 1900
- 13298, 1900
- 13298, 1900
- 13298, 1900
- 13298, 1900
- 13298, 1900
- 13298, 1900
- 13298, 1900
- 13298, 1900
- 13298, 1900
- 13298, 1900
- 13298, 1900
- 13298, 1900
- 13298, 1900
- 13298, 1900
- 13298, 1900
- 13298, 1900
- 13298, 1900
- 13298, 1900
- 13298, 1900
- 13298, 1900
- 13298, 1900
- 13298, 1900
- 13298, 1900
- 13298, 1900
- 13298, 1900
- 13298, 1900
- 13298, 1900
- 13298, 1900
- 13298, 1900
- 13298, 1900
- 13298, 1900
- 13298, 1900
- 13298, 1900
- 13298, 1900
- 13298, 1900
- 13298, 1900
- 13298, 1900
- 13298, 1900
- 13298, 1900
- 13298, 1900
-

Walla Walla River Irrigation District

3201 Water Rights Map



Primary Certificates

CERTIFICATE, PRIORITY

- 1234, 1915
- 12518, 1875
- 12519, 1891
- 12519, 1901
- 12519, 1908
- 12889, 1891
- 13088, 1886
- 13210, 1888
- 13210, 1889
- 13252, 1879
- 13252, 1902
- 3547, 1915
- 84159, 1913
- 85856, 1915
- T-10430, 1880
- Water Rights Not Within Quarter

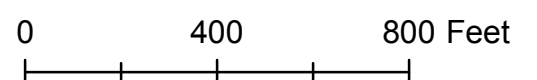
T6N R35E WM Section 35 SW Quarter

ASSESSORMAP	CERTIFICATE	PRIORITY	QQ	WR ACRES
6N35E35C/1800	84159	1913	SESW	8.10
6N35E35C/1900	3547	1915	SESW	9.29
6N35E35C/200	13210	1888	SESW	0.30
6N35E35C/2200	85856	1915	SESW	13.72
6N35E35C/2200	T-10430	1880	SESW	4.28
6N35E35C/300	13210	1889	NESW	3.50
6N35E35C/300	13210	1888	NESW	0.53
6N35E35C/400	13252	1879	NESW	7.00
6N35E35C/400	13252	1902	NESW	1.50
6N35E35C/500	12889	1891	NESW	8.00
6N35E35C/500	13210	1888	NESW	0.17
6N35E35C/600	12519	1908	NESW	2.48
6N35E35C/600	12519	1901	NESW	1.00
6N35E35C/600	12519	1891	NESW	1.00
6N35E35C/600	12518	1875	NESW	10.00
6N35E35C/700	13088	1886	NWSW	5.00
6N35E35C/900	1234	1915	NWSW	0.17
6N35E35C/900	1234	1915	NWSW	18.90



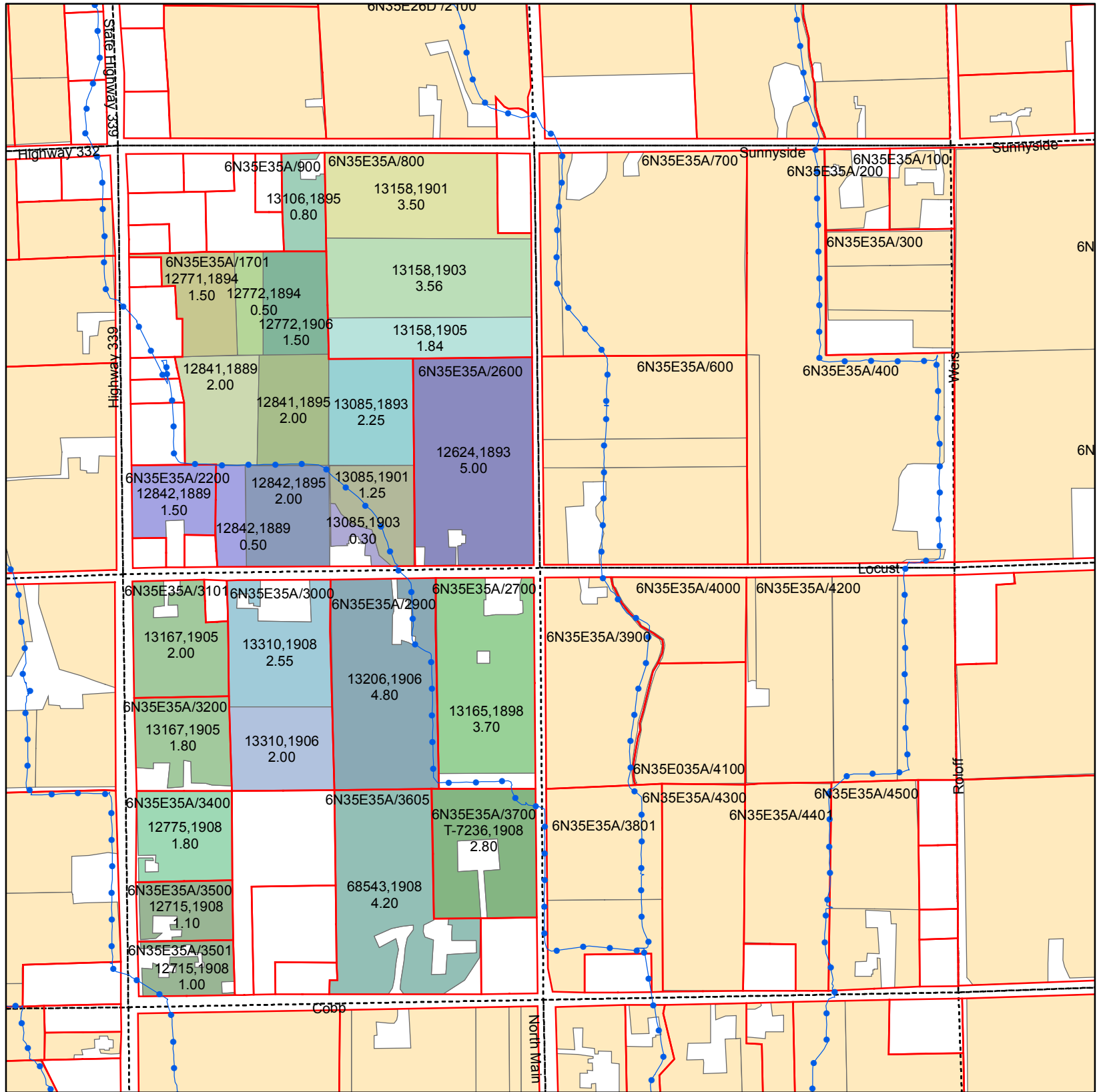
Legend

- PIPE
- Parcel
- QCDB
- WWRID Boundary



Walla Walla River Irrigation District

3201 Water Rights Map



T6N R35E WM Section 35 W1/2 NE Quarter

Primary Certificates

CERT, PRIORITY

12624, 1893
12715, 1908
12771, 1894
12772, 1894
12772, 1906
12775, 1908
12841, 1889
12841, 1895
12842, 1889
12842, 1895
13085, 1893
13085, 1901
13085, 1903
13106, 1895
13158, 1901
13158, 1903
13158, 1905
13165, 1898
13167, 1905
13206, 1906
13310, 1906
13310, 1908
68543, 1908
T-7236, 1908
Water Rights Not Within Quarter

ASSESSORMAP	CERTIFICATE	PRIORITY	QQ	WR ACRES
6N35E35A/1701	12772	1906	NWNE	1.50
6N35E35A/1701	12842	1895	NWNE	2.00
6N35E35A/1701	12842	1889	NWNE	0.50
6N35E35A/1701	12772	1894	NWNE	0.50
6N35E35A/1701	12841	1889	NWNE	2.00
6N35E35A/1701	12841	1895	NWNE	2.00
6N35E35A/1701	12771	1894	NWNE	1.50
6N35E35A/1701	13085	1903	NWNE	0.30
6N35E35A/1701	13085	1901	NWNE	1.25
6N35E35A/1701	13085	1893	NWNE	2.25
6N35E35A/2200	12842	1889	NWNE	1.50
6N35E35A/2600	12624	1893	NWNE	5.00
6N35E35A/2700	13165	1898	SWNE	3.70
6N35E35A/2900	13206	1906	SWNE	4.80
6N35E35A/3000	13310	1908	SWNE	2.55
6N35E35A/3000	13310	1906	SWNE	2.00
6N35E35A/3101	13167	1905	SWNE	2.00
6N35E35A/3200	13167	1905	SWNE	1.80
6N35E35A/3400	12775	1908	SWNE	1.80
6N35E35A/3500	12715	1908	SWNE	1.10
6N35E35A/3501	12715	1908	SWNE	1.00
6N35E35A/3605	68543	1908	SWNE	4.20
6N35E35A/3700	T-7236	1908	SWNE	2.80
6N35E35A/800	13158	1901	NWNE	3.50
6N35E35A/800	13158	1903	NWNE	3.56
6N35E35A/800	13158	1905	NWNE	1.84
6N35E35A/900	13106	1895	NWNE	0.80



Legend

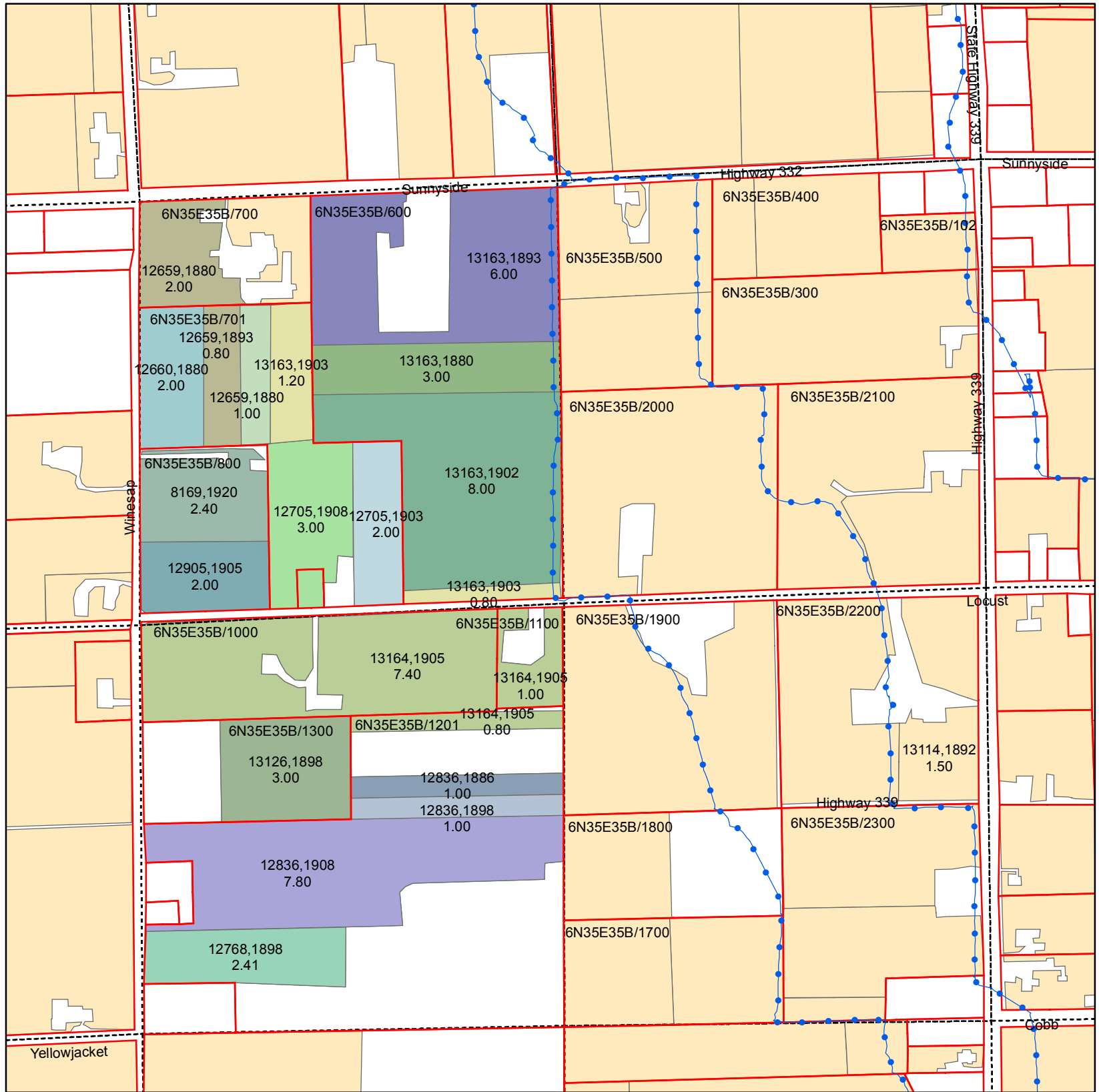
- PIPE
- Parcel
- QCDB
- WWRID Boundary

0 400 800 Feet

Date March 2011

Walla Walla River Irrigation District

3201 Water Rights Map



T6N R35E WM Section 35 W1/2 NW Quarter

Primary Certificates

CERTIFICATE, PRIORITY

- 12659, 1880
- 12659, 1893
- 12660, 1880
- 12705, 1903
- 12705, 1908
- 12768, 1898
- 12836, 1886
- 12836, 1898
- 12836, 1908
- 12905, 1905
- 13126, 1898
- 13163, 1880
- 13163, 1893
- 13163, 1902
- 13163, 1903
- 13164, 1905
- 8169, 1920
- Water Rights Not Within Quarter

ASSESSORMAP	CERTIFICATE	PRIORITY	QQ	WR ACRES
6N35E35B/1000	13164	1905	SWNW	7.40
6N35E35B/1100	13164	1905	SWNW	1.00
6N35E35B/1201	12836	1908	SWNW	7.80
6N35E35B/1201	13164	1905	SWNW	0.80
6N35E35B/1201	12836	1886	SWNW	1.00
6N35E35B/1201	12836	1898	SWNW	1.00
6N35E35B/1201	12768	1898	SWNW	2.41
6N35E35B/1300	13126	1898	SWNW	3.00
6N35E35B/600	13163	1893	NWNW	6.00
6N35E35B/600	13163	1880	NWNW	3.00
6N35E35B/600	13163	1902	NWNW	8.00
6N35E35B/600	13163	1903	NWNW	0.80
6N35E35B/700	12659	1880	NWNW	2.00
6N35E35B/700	12659	1893	NWNW	1.20
6N35E35B/701	12659	1880	NWNW	1.00
6N35E35B/701	12705	1908	NWNW	3.00
6N35E35B/701	12705	1903	NWNW	2.00
6N35E35B/701	12660	1880	NWNW	2.00
6N35E35B/701	12659	1893	NWNW	0.80
6N35E35B/701	13163	1903	NWNW	1.20
6N35E35B/800	8169	1920	NWNW	2.40
6N35E35B/800	12905	1905	NWNW	2.00

Legend

- PIPE
- Parcel
- QCDB
- WWRID Boundary

