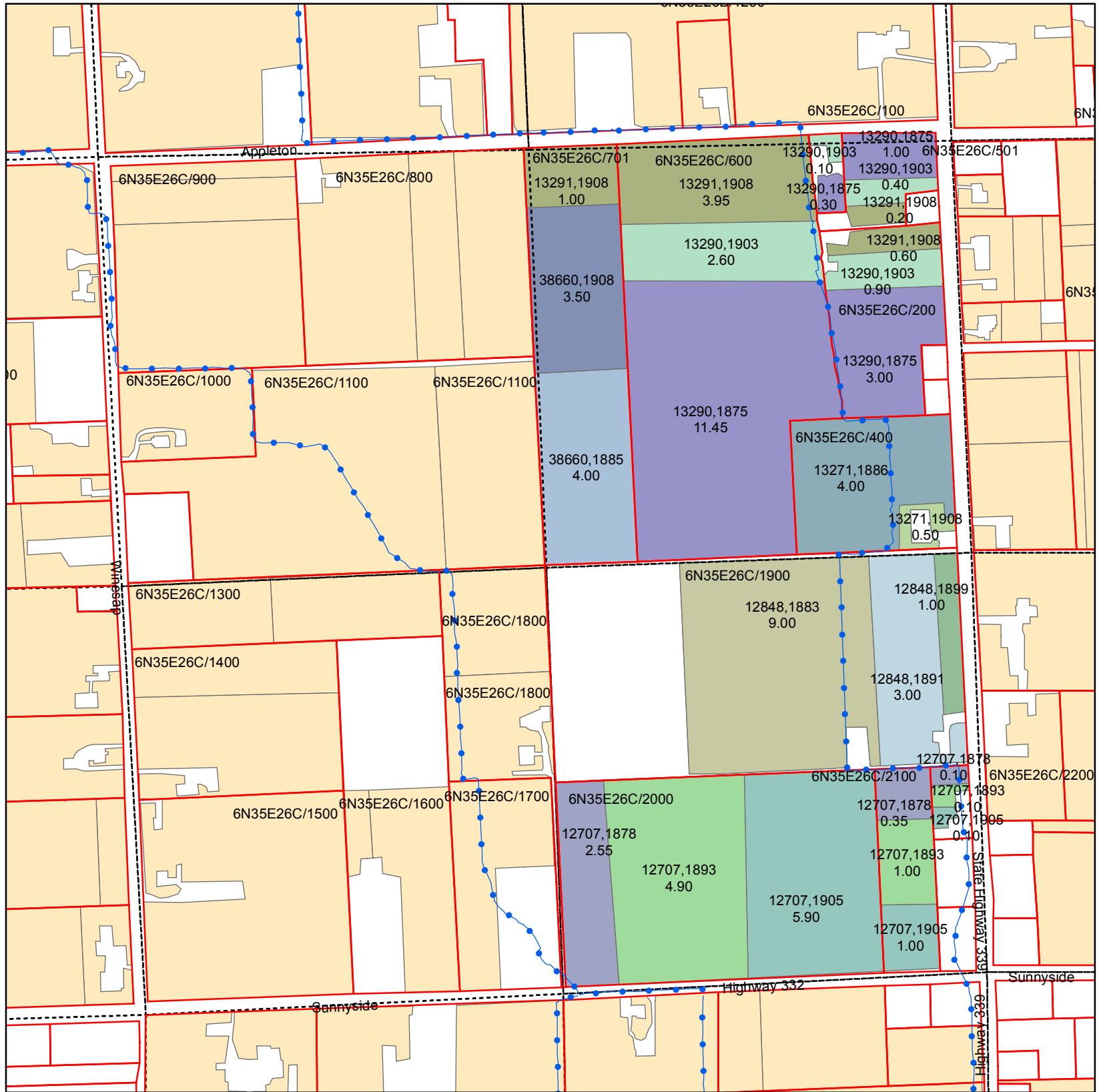


Walla Walla River Irrigation District

3201 Water Rights Map



T6N R35E WM Section 26 E1/2 SW Quarter

ASSESSORMAP	CERTIFICATE	PRIORITY	QQ	WR ACRES
6N35E26C/100	13290	1875	NESW	0.30
6N35E26C/100	13290	1903	NESW	0.10
6N35E26C/1900	12848	1883	SESW	9.00
6N35E26C/1900	12848	1899	SESW	1.00
6N35E26C/1900	12848	1891	SESW	3.00
6N35E26C/200	13290	1875	NESW	3.00
6N35E26C/200	13290	1903	NESW	0.90
6N35E26C/200	13291	1908	NESW	0.60
6N35E26C/2000	12707	1878	SESW	2.55
6N35E26C/2000	12707	1905	SESW	5.90
6N35E26C/2000	12707	1893	SESW	4.90
6N35E26C/2100	12707	1878	SESW	0.35
6N35E26C/2100	12707	1893	SESW	1.00
6N35E26C/2100	12707	1905	SESW	1.00
6N35E26C/2200	12707	1878	SESW	0.10
6N35E26C/2200	12707	1893	SESW	0.10
6N35E26C/2200	12707	1905	SESW	0.10
6N35E26C/400	13271	1886	NESW	4.00
6N35E26C/400	13271	1908	NESW	0.50
6N35E26C/501	13290	1875	NESW	1.00
6N35E26C/501	13290	1903	NESW	0.40
6N35E26C/501	13291	1908	NESW	0.20
6N35E26C/600	13291	1908	NESW	3.95
6N35E26C/600	13290	1875	NESW	11.45
6N35E26C/600	13290	1903	NESW	2.60
6N35E26C/701	38660	1885	NESW	4.00
6N35E26C/701	38660	1908	NESW	3.50
6N35E26C/701	13291	1908	NESW	1.00

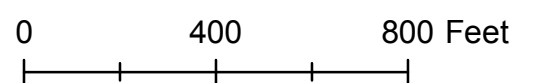
Primary Certificates

CERTIFICATION,PRIORITY

- 12707, 1878
- 12707, 1893
- 12707, 1905
- 12848, 1883
- 12848, 1891
- 12848, 1899
- 13271, 1886
- 13271, 1908
- 13290, 1875
- 13290, 1903
- 13291, 1908
- 38660, 1885
- 38660, 1908
- Water Rights Not Within Quarter

Legend

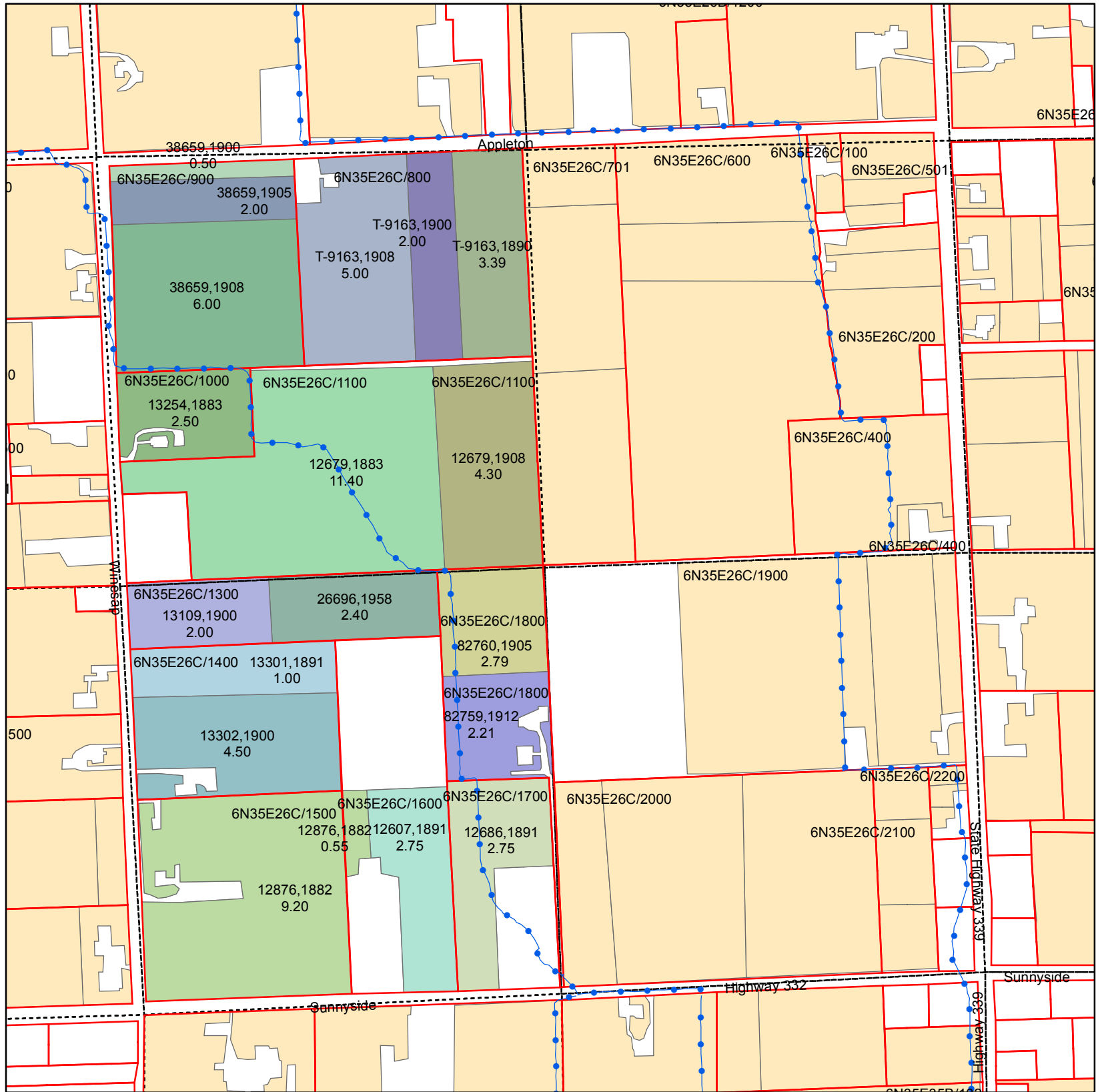
- PIPE
- Parcel
- QCDB
- WWRID Boundary



Date March 2011

Walla Walla River Irrigation District

3201 Water Rights Map



Primary Certificates

T6N R35E WM Section 26 W1/2 SW Quarter

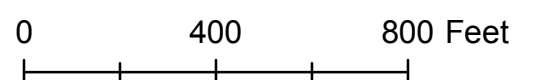
CERTIFICATE, PRIORITY

- 12607, 1891
- 12679, 1883
- 12679, 1908
- 12686, 1891
- 12876, 1882
- 13109, 1900
- 13254, 1883
- 13301, 1891
- 13302, 1900
- 26696, 1958
- 38659, 1900
- 38659, 1905
- 38659, 1908
- 82759, 1912
- 82760, 1905
- T-9163, 1890
- T-9163, 1900
- T-9163, 1908
- Water Rights Not Within Quarter

ASSESSORMAP	CERTIFICATE	PRIORITY	QQ	WR ACRES
6N35E26C/1000	13254	1883	NWSW	2.50
6N35E26C/1100	12679	1883	NWSW	11.40
6N35E26C/1100	12679	1908	NWSW	4.30
6N35E26C/1300	26696	1958	SWSW	2.40
6N35E26C/1300	13109	1900	SWSW	2.00
6N35E26C/1400	13301	1891	SWSW	1.00
6N35E26C/1400	13302	1900	SWSW	4.50
6N35E26C/1500	12876	1882	SWSW	9.20
6N35E26C/1600	12607	1891	SWSW	2.75
6N35E26C/1600	12876	1882	SWSW	0.55
6N35E26C/1700	12686	1891	SWSW	2.75
6N35E26C/1800	82760	1905	SWSW	2.79
6N35E26C/1800	82759	1912	SWSW	2.21
6N35E26C/800	T-9163	1908	NWSW	5.00
6N35E26C/800	T-9163	1890	NWSW	3.39
6N35E26C/800	T-9163	1900	NWSW	2.00
6N35E26C/900	38659	1900	NWSW	0.50
6N35E26C/900	38659	1905	NWSW	2.00
6N35E26C/900	38659	1908	NWSW	6.00

Legend

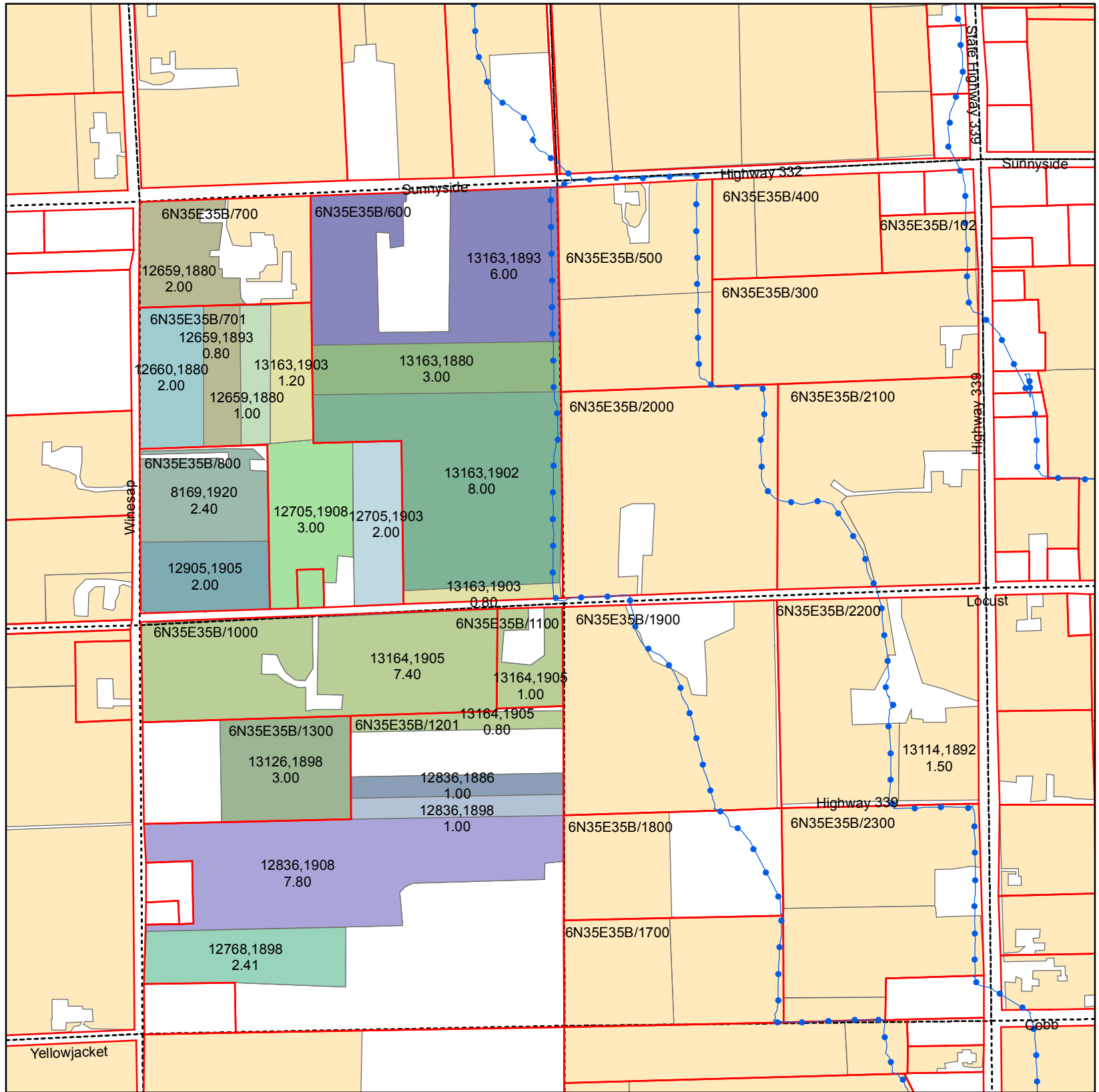
- PIPE
- Parcel
- QCDB
- WWRID Boundary



Date March 2011

Walla Walla River Irrigation District

3201 Water Rights Map



T6N R35E WM Section 35 W1/2 NW Quarter

Primary Certificates

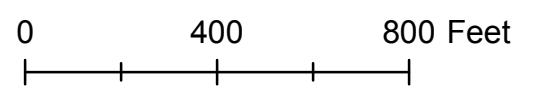
CERTIFICATE, PRIORITY

- 12659, 1880
- 12659, 1893
- 12660, 1880
- 12705, 1903
- 12705, 1908
- 12768, 1898
- 12836, 1886
- 12836, 1898
- 12836, 1908
- 12905, 1905
- 13126, 1898
- 13163, 1880
- 13163, 1893
- 13163, 1902
- 13163, 1903
- 13164, 1905
- 8169, 1920
- Water Rights Not Within Quarter

ASSESSORMAP	CERTIFICATE	PRIORITY	QQ	WR ACRES
6N35E35B/1000	13164	1905	SWNW	7.40
6N35E35B/1100	13164	1905	SWNW	1.00
6N35E35B/1201	12836	1908	SWNW	7.80
6N35E35B/1201	13164	1905	SWNW	0.80
6N35E35B/1201	12836	1886	SWNW	1.00
6N35E35B/1201	12836	1898	SWNW	1.00
6N35E35B/1201	12768	1898	SWNW	2.41
6N35E35B/1300	13126	1898	SWNW	3.00
6N35E35B/600	13163	1893	NWNW	6.00
6N35E35B/600	13163	1880	NWNW	3.00
6N35E35B/600	13163	1902	NWNW	8.00
6N35E35B/600	13163	1903	NWNW	0.80
6N35E35B/700	12659	1880	NWNW	2.00
6N35E35B/700	12659	1893	NWNW	1.20
6N35E35B/701	12659	1880	NWNW	1.00
6N35E35B/701	12705	1908	NWNW	3.00
6N35E35B/701	12705	1903	NWNW	2.00
6N35E35B/701	12660	1880	NWNW	2.00
6N35E35B/701	12659	1893	NWNW	0.80
6N35E35B/701	13163	1903	NWNW	1.20
6N35E35B/800	8169	1920	NWNW	2.40
6N35E35B/800	12905	1905	NWNW	2.00

Legend

- PIPE
- Parcel
- QCDB
- WWRID Boundary



Date March 2011