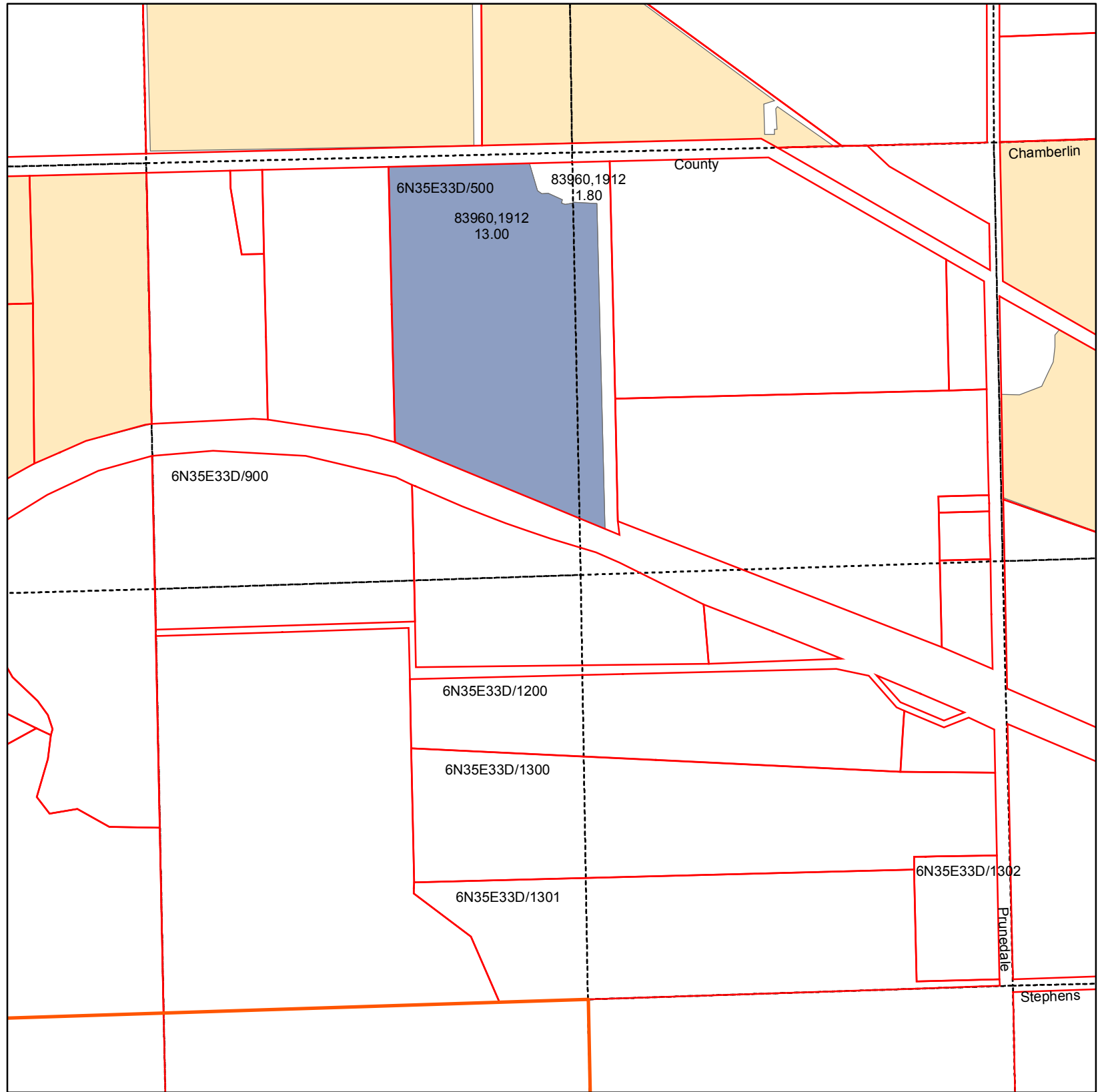


# Walla Walla River Irrigation District

## 3201 Water Rights Map



### T6N R35E WM Section 33 SE Quarter

| ASSESSORMAP  | CERTIFICATE | PRIORITY | QQ   | WR ACRES |
|--------------|-------------|----------|------|----------|
| 6N35E33D/500 | 83960       | 1912     | NWSE | 13.00    |
| 6N35E33D/500 | 83960       | 1912     | NESE | 1.80     |



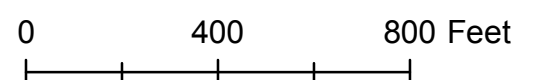
### Primary Certificates

#### CERTIFICATE, PRIORITY

- 83960, 1912
- Water Rights Not Within Quarter

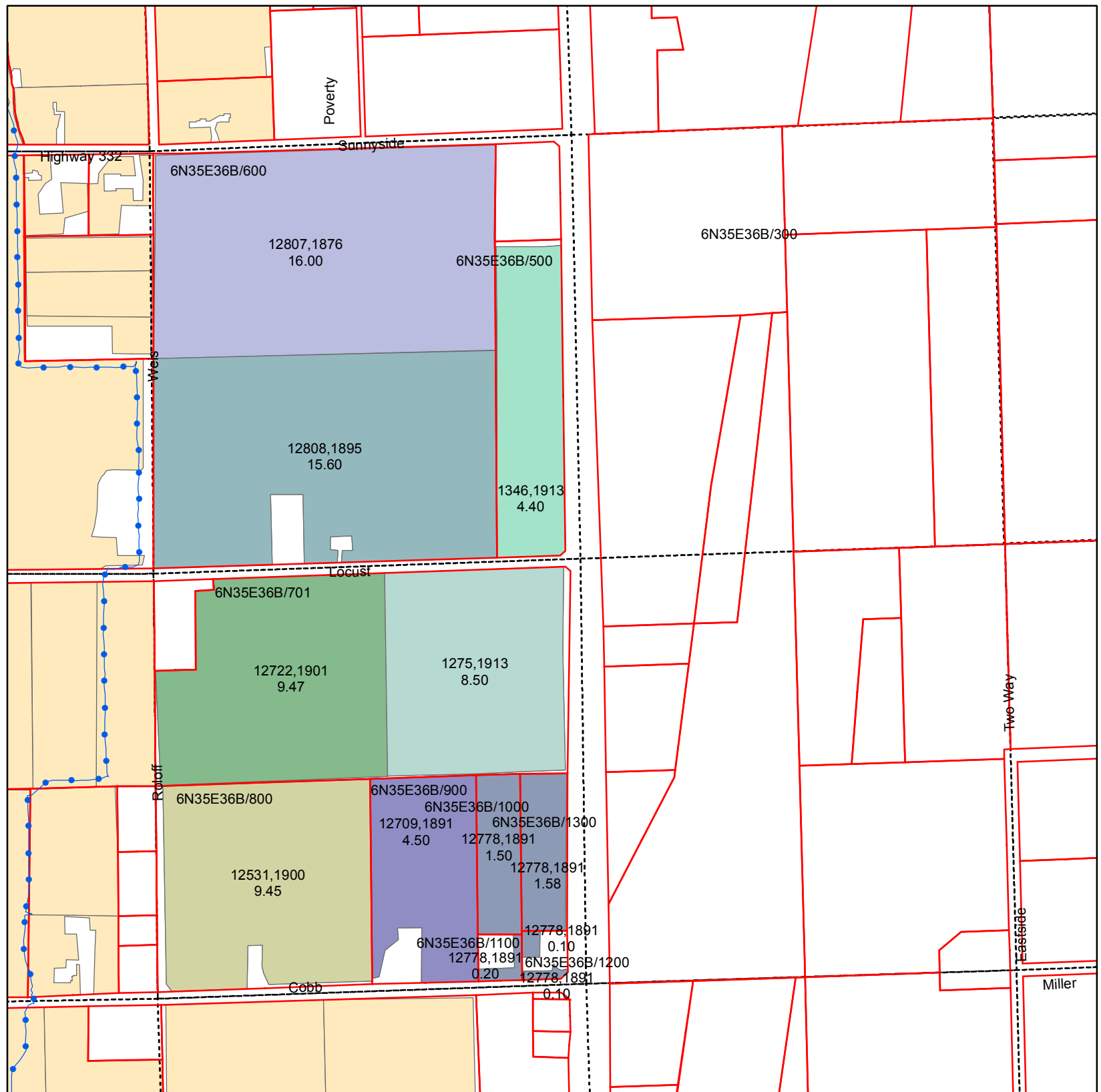
### Legend

- PIPE
- Parcel
- QCDB
- WWRID Boundary



# Walla Walla River Irrigation District

## 3201 Water Rights Map



### T6N R35E WM Section 36 NW Quarter

| ASSESSORMAP   | CERTIFICATE | PRIORITY | QQ   | WR ACRES |
|---------------|-------------|----------|------|----------|
| 6N35E36B/1000 | 12778       | 1891     | SWNW | 1.50     |
| 6N35E36B/1100 | 12778       | 1891     | SWNW | 0.20     |
| 6N35E36B/1200 | 12778       | 1891     | SWNW | 0.10     |
| 6N35E36B/1200 | 12778       | 1891     | SWNW | 0.10     |
| 6N35E36B/1300 | 12778       | 1891     | SWNW | 1.58     |
| 6N35E36B/500  | 1346        | 1913     | NWNW | 4.40     |
| 6N35E36B/600  | 12807       | 1876     | NWNW | 16.00    |
| 6N35E36B/600  | 12808       | 1895     | NWNW | 15.60    |
| 6N35E36B/701  | 12722       | 1901     | SWNW | 9.47     |
| 6N35E36B/701  | 1275        | 1913     | SWNW | 8.50     |
| 6N35E36B/800  | 12531       | 1900     | SWNW | 9.45     |
| 6N35E36B/900  | 12709       | 1891     | SWNW | 4.50     |

#### Primary Certificates

#### CERTIFICATE, PRIORITY

- 12531, 1900
- 12709, 1891
- 12722, 1901
- 1275, 1913
- 12778, 1891
- 12807, 1876
- 12808, 1895
- 1346, 1913
- Water Rights Not Within Quarter

#### Legend

- PIPE
- Parcel
- QCDB
- WWRID Boundary

