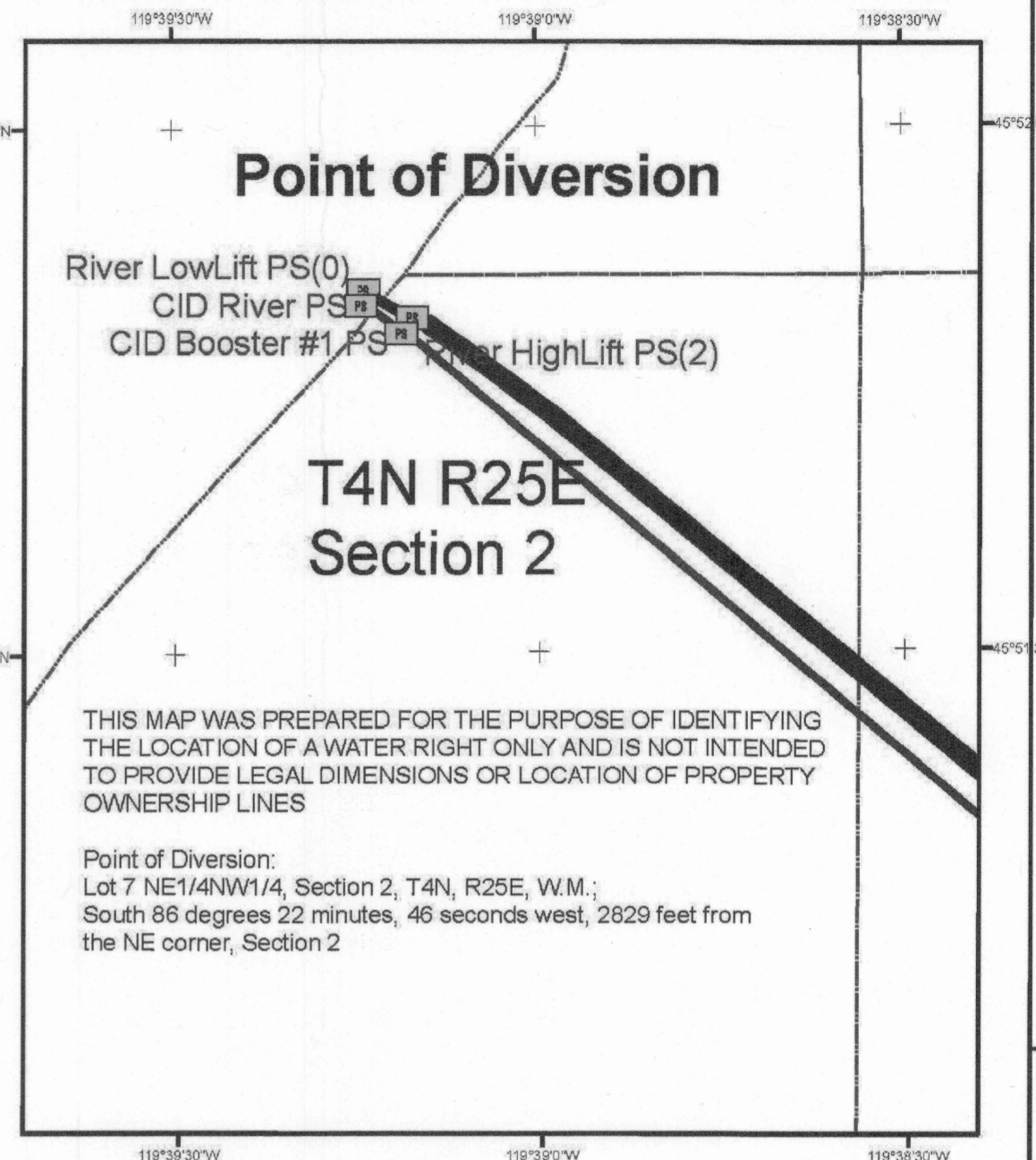
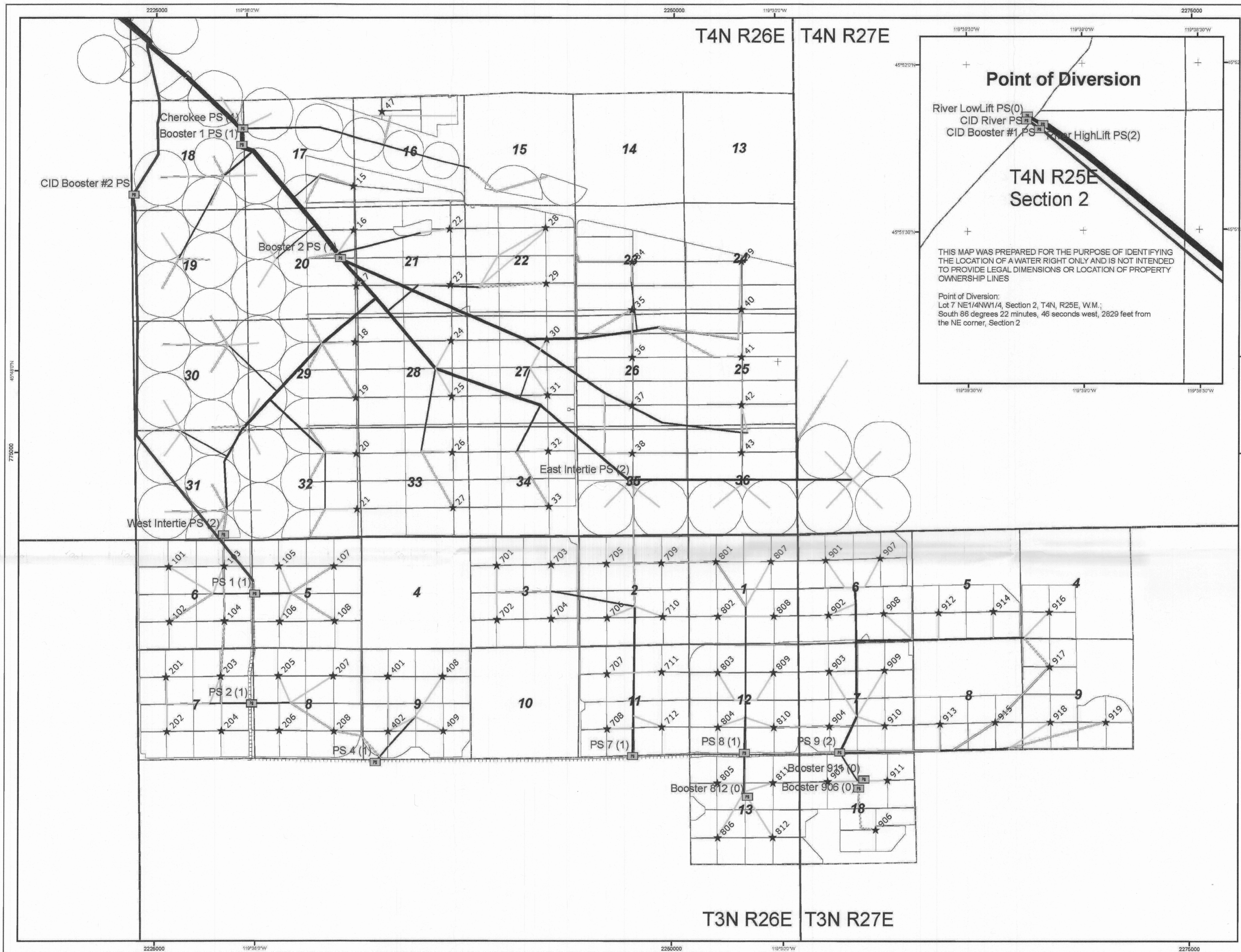


RECEIVED
 NOV 03 2016
 OWRD



- Legend**
- Pump Station (No. of Flow Meters)
 - ★ Manifold
 - CID Canal
- Mainline Material, Dia.(in)**
- PVC, 4
 - PVC, 8
 - PVC, 10
 - PVC, 12
 - PVC, 15
 - PVC, 16
 - Steel, 12
 - Steel, 14
 - Steel, 16
 - Steel, 18
 - Steel, 20
 - Steel, 22
 - Steel, 24
 - Steel, 26
 - Steel, 30
 - Steel, 36
 - Steel, 42
 - Steel, 48
 - Steel, 54
 - Steel, 60
 - Steel, 72
- T&R
 - Section
 - circles
 - trees

Drawn By: ADB
 OR North State Plane
 NAD 27 (FT)
 Date 01/05/07

N

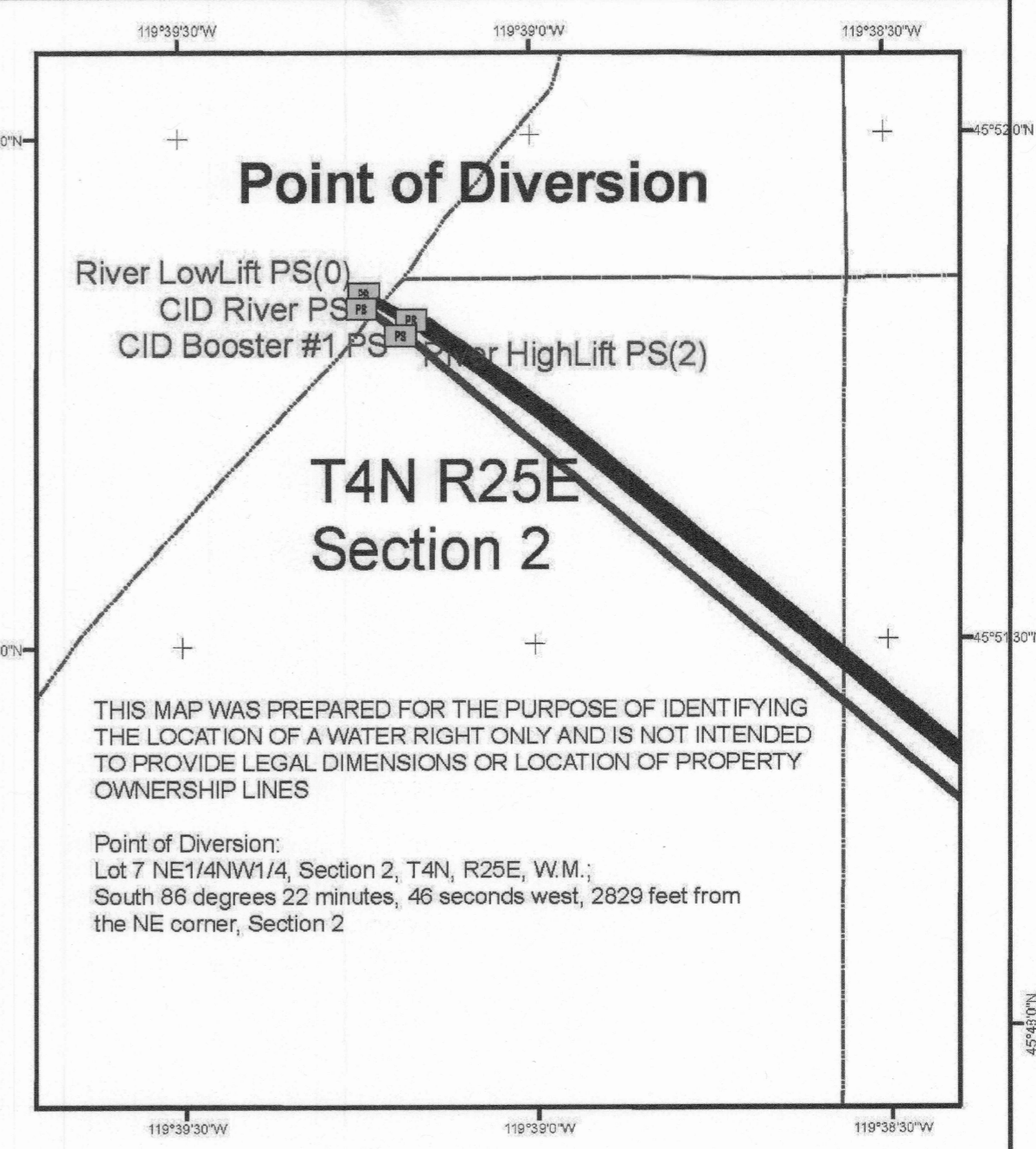
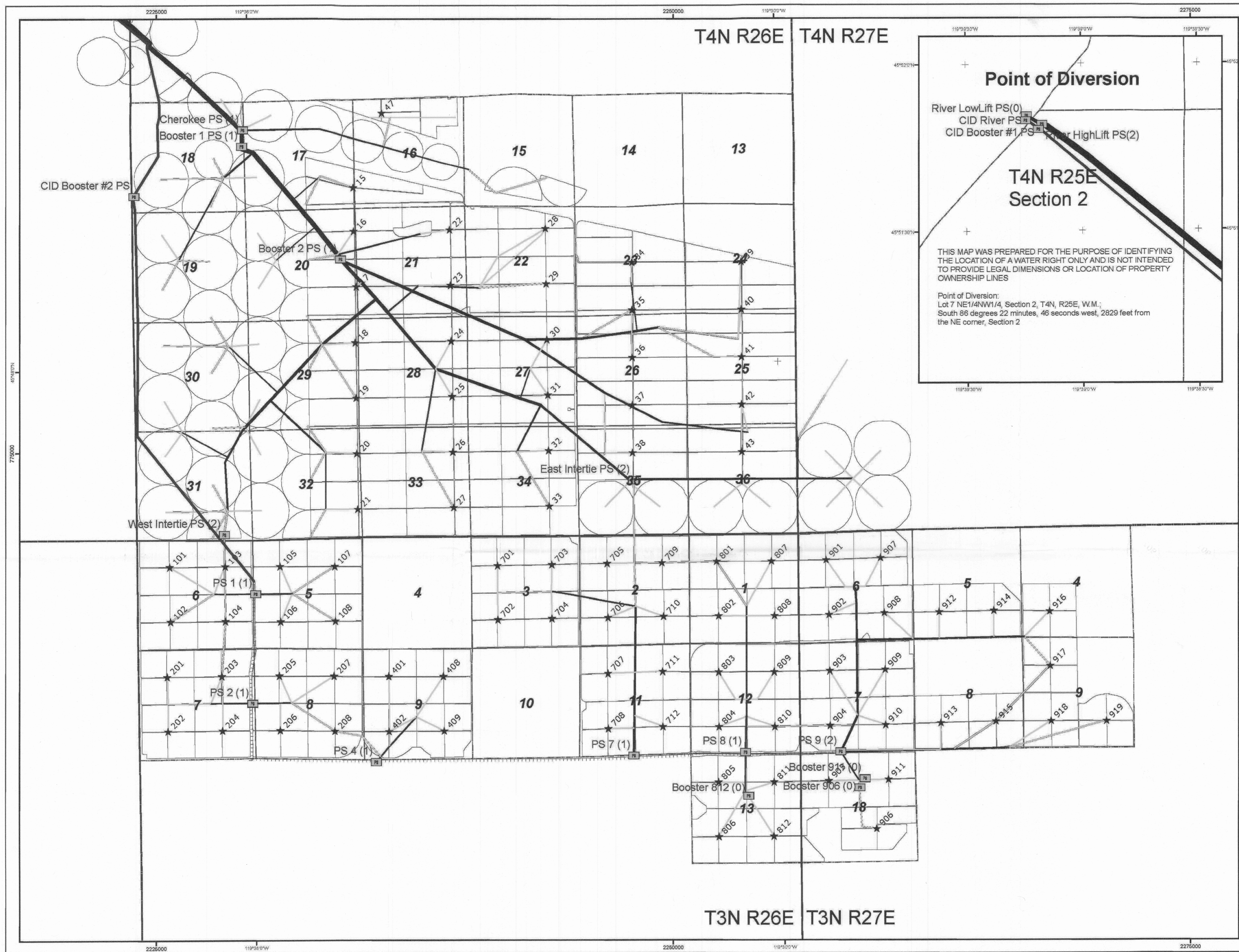
0 0.25 0.5
 Miles

1 inch = 0.5 miles

This map was reproduced from a Water Distribution System and Flow Meter Location map submitted to OWRD by Potlatch Corporation in 2007 for the claim of Beneficial Use on Transfer T-8753, T8675, T8616, T8298, T8617 Lands subject to these transfers were served by the same distribution system as the current transfers. This map represent the existing distribution system for the drip irrigation of trees prior to any modifications to convert the system back to irrigation with center pivots.

Water Distribution System and Flow Meter Location Map
 Applies to Certificates 76584, 76585, 76586, 83588, 83589, 83590, 83591, 83592, and 89511
 Farmland Reserve Inc.
 Boardman, Oregon Farm

RECEIVED
NOV 03 2016
OWRD



- Legend**
- Pump Station (No. of Flow Meters)
 - ★ Manifold
 - CID Canal
- Mainline Material, Dia.(in)**
- PVC, 4
 - PVC, 8
 - PVC, 10
 - PVC, 12
 - PVC, 15
 - PVC, 16
 - Steel, 12
 - Steel, 14
 - Steel, 16
 - Steel, 18
 - Steel, 20
 - Steel, 22
 - Steel, 24
 - Steel, 26
 - Steel, 30
 - Steel, 36
 - Steel, 42
 - Steel, 48
 - Steel, 54
 - Steel, 60
 - Steel, 72
- T&R
 - Section
 - circles
 - trees

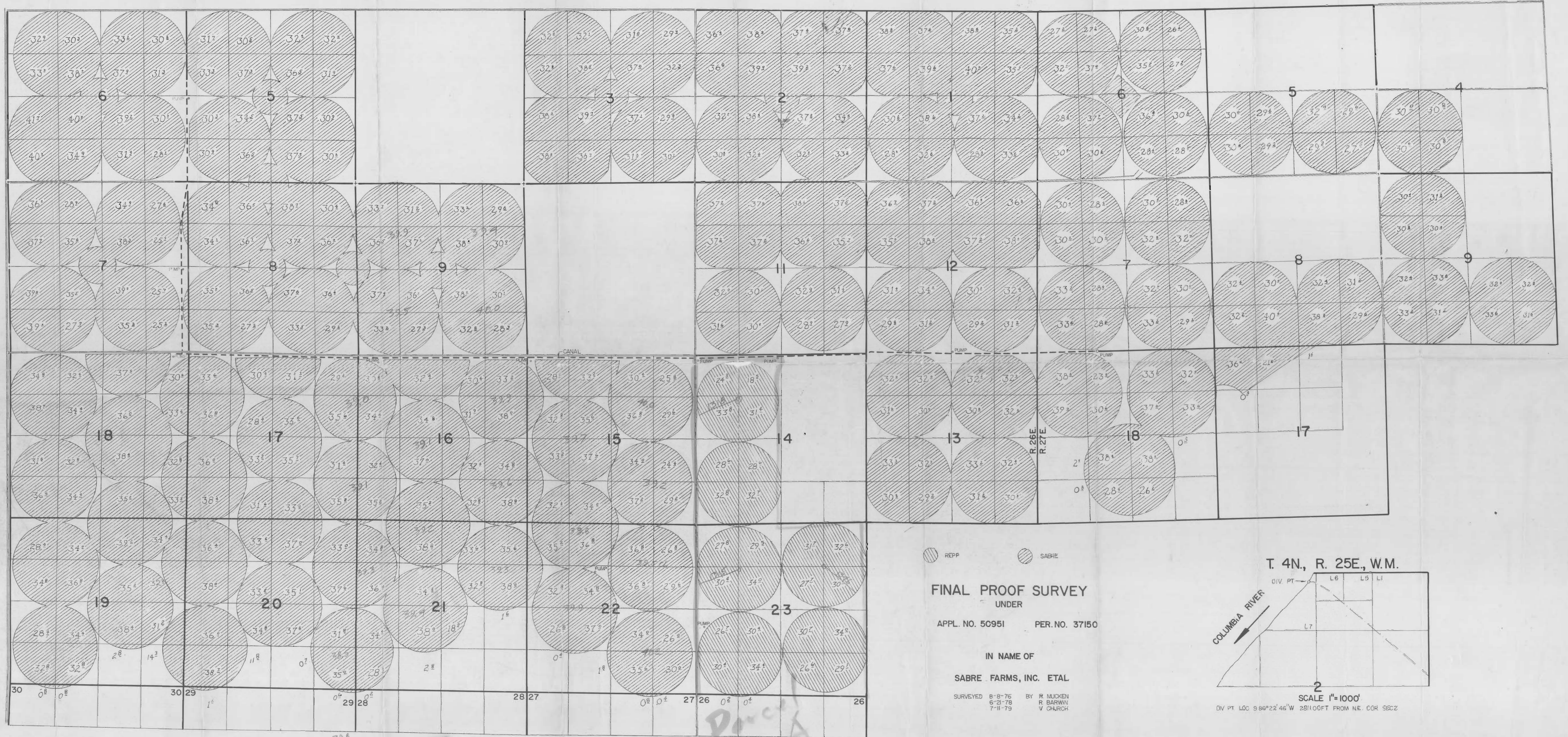
Drawn By: ADB
OR North State Plane
NAD 27 (FT)
Date 01/05/07

0 0.25 0.5
Miles
1 inch = 0.5 miles

This map was reproduced from a Water Distribution System and Flow Meter Location map submitted to OWRD by Potlatch Corporation in 2007 for the claim of Beneficial Use on Transfer T-8753, T8675, T8616, T8298, T8617 Lands subject to these transfers were served by the same distribution system as the current transfers. This map represent the existing distribution system for the drip irrigation of trees prior to any modifications to convert the system back to irrigation with center pivots.

Water Distribution System and Flow Meter Location Map
Applies to Certificates 76584, 76585, 76586, 83588, 83589, 83590, 83591, 83592, and 89511
Fairland Reserve Inc.
Boardman, Oregon Farm

TOWNSHIP 3 NORTH, RANGE 26 & 27 EAST, W. M.



REPP SABRE

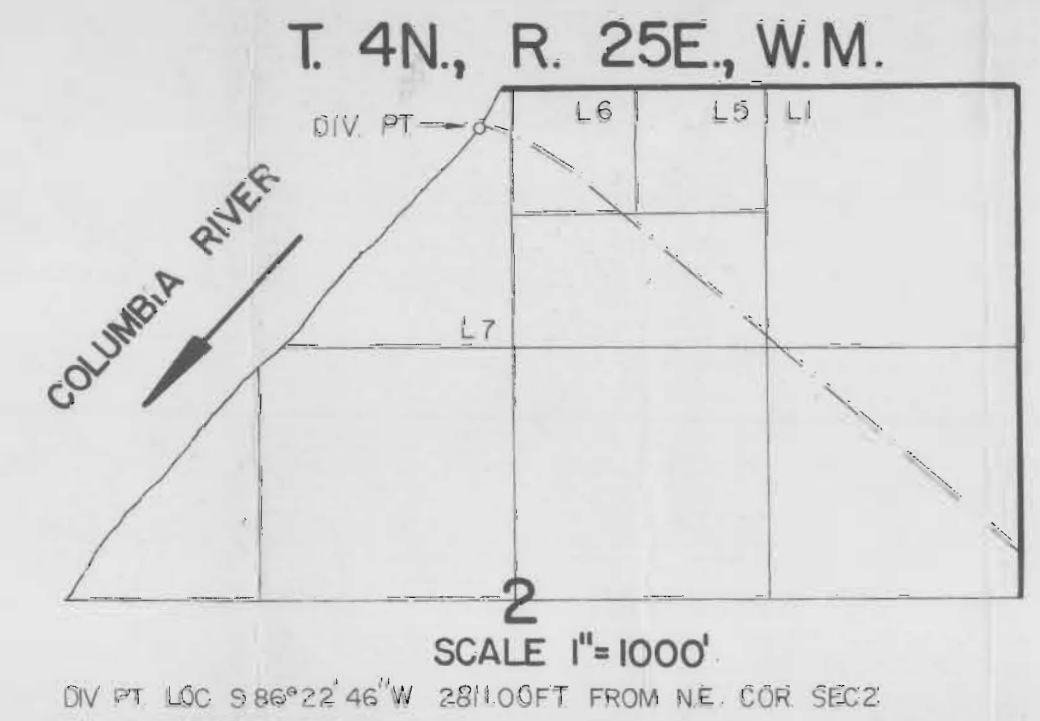
FINAL PROOF SURVEY
UNDER

APPL. NO. 50951 PER. NO. 37150

IN NAME OF

SABRE FARMS, INC. ETAL

SURVEYED 8-8-76 BY R. MUCKEN
6-21-78 R. BARWIN
7-11-79 V. CHURCH



RECEIVED

NOV 03 2016

QWRD

T3N, R26E, WM

T3N, R27E, WM

COUNTY LINE ROAD

COLONEL JORDAN ROAD

HOMESTEAD LANE

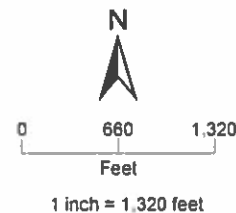
10

NESE 0.10
0.18
0.27
SESE 0.05

LEGEND

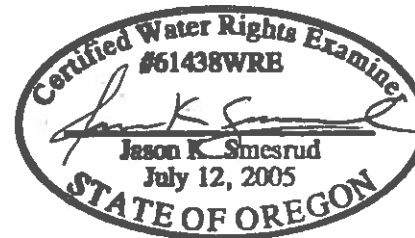
- FRI Property Boundary
- From Lands (Existing POU Associated with this Transfer)
- Lands Left Unchanged (Remaining Right)
- PLSS Sections
- Water Bodies
- Railroads
- Pipelines
- Paved Roads

SESE 30.52 Quarter Quarter Section Location and Water Right POU Acres



This drawing is an exhibit for a Water Right Permanent Transfer. This map is not intended to provide legal dimensions or locations of property ownership lines. Property lines and/or other lines of occupation shown hereon are not represented by the undersigned to meet accuracy standards of Land Surveys.

CWRE: Jason Smesrud
 Drawn By: Edward Douglas
 Date: October 2016
 Projection: NAD83 Oregon Statewide Lambert, International Feet



EXPIRATION DATE: 6/30/2018

Existing Place of Use (POU) Map
 Permanent Water Rights Transfer
 Certificate 76584
 Farmland Reserve Inc.
 Boardman, Oregon Farm

T3N, R27E, WM
 Morrow County, Oregon

The POU consists of 8 foot wide irrigated strips located on 10 foot centers marked by the tree rows