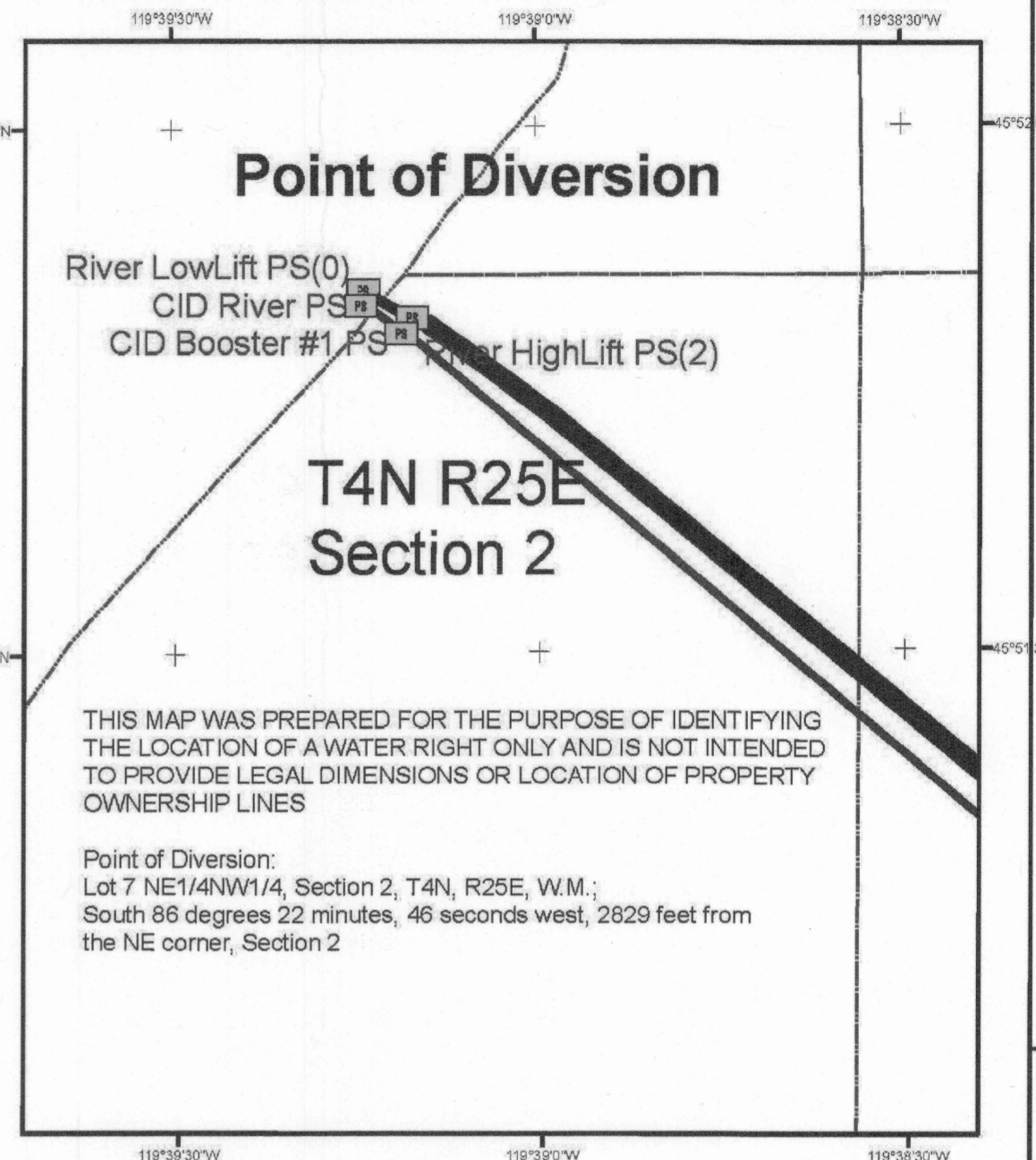
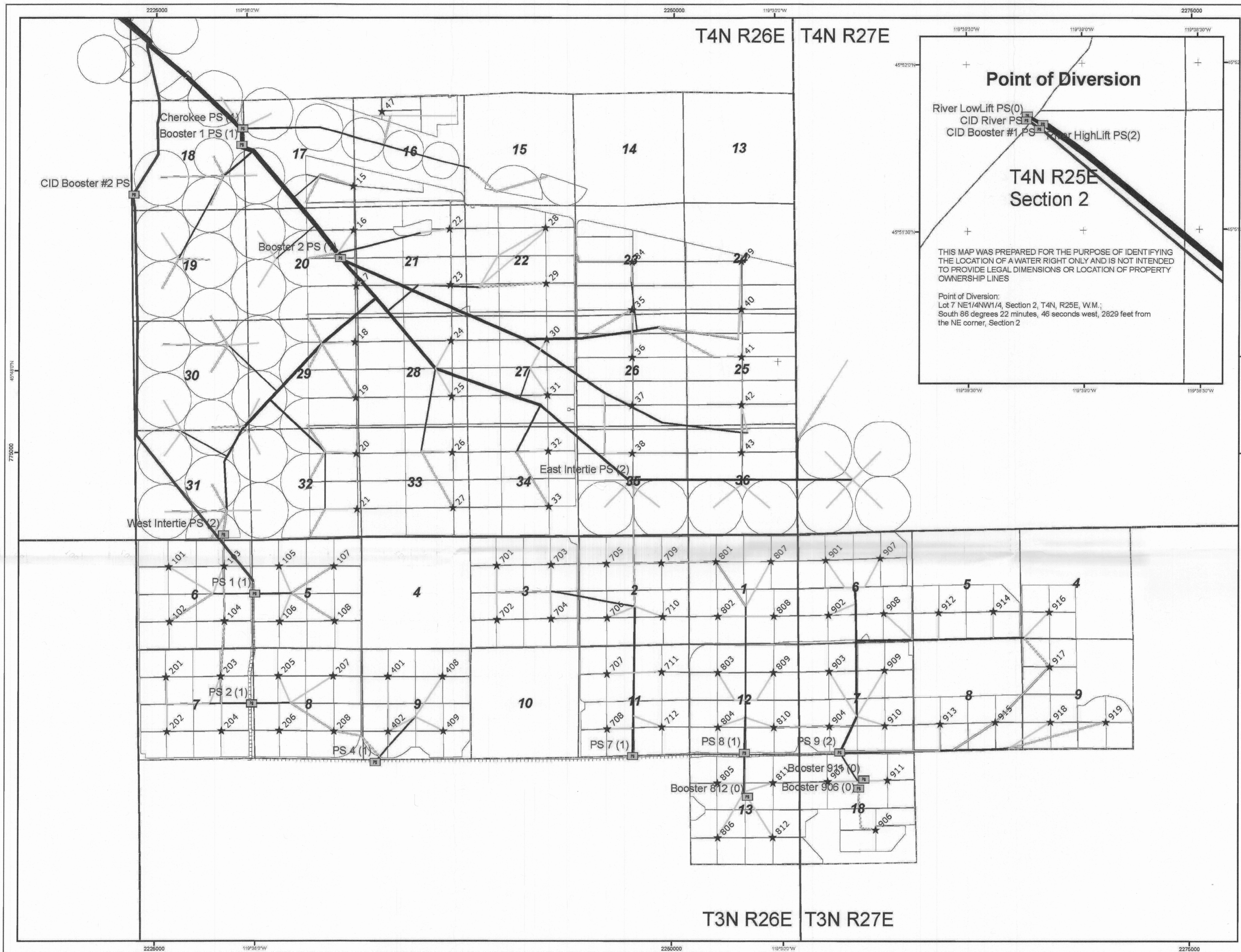


RECEIVED  
Nov 03 2016  
OWRD



- Legend**
- Pump Station (No. of Flow Meters)
  - ★ Manifold
  - CID Canal
- Mainline Material, Dia.(in)**
- PVC, 4
  - PVC, 8
  - PVC, 10
  - PVC, 12
  - PVC, 15
  - PVC, 16
  - Steel, 12
  - Steel, 14
  - Steel, 16
  - Steel, 18
  - Steel, 20
  - Steel, 22
  - Steel, 24
  - Steel, 26
  - Steel, 30
  - Steel, 36
  - Steel, 42
  - Steel, 48
  - Steel, 54
  - Steel, 60
  - Steel, 72
- T&R
  - Section
  - circles
  - trees

Drawn By: ADB  
 OR North State Plane  
 NAD 27 (FT)  
 Date 01/05/07

N

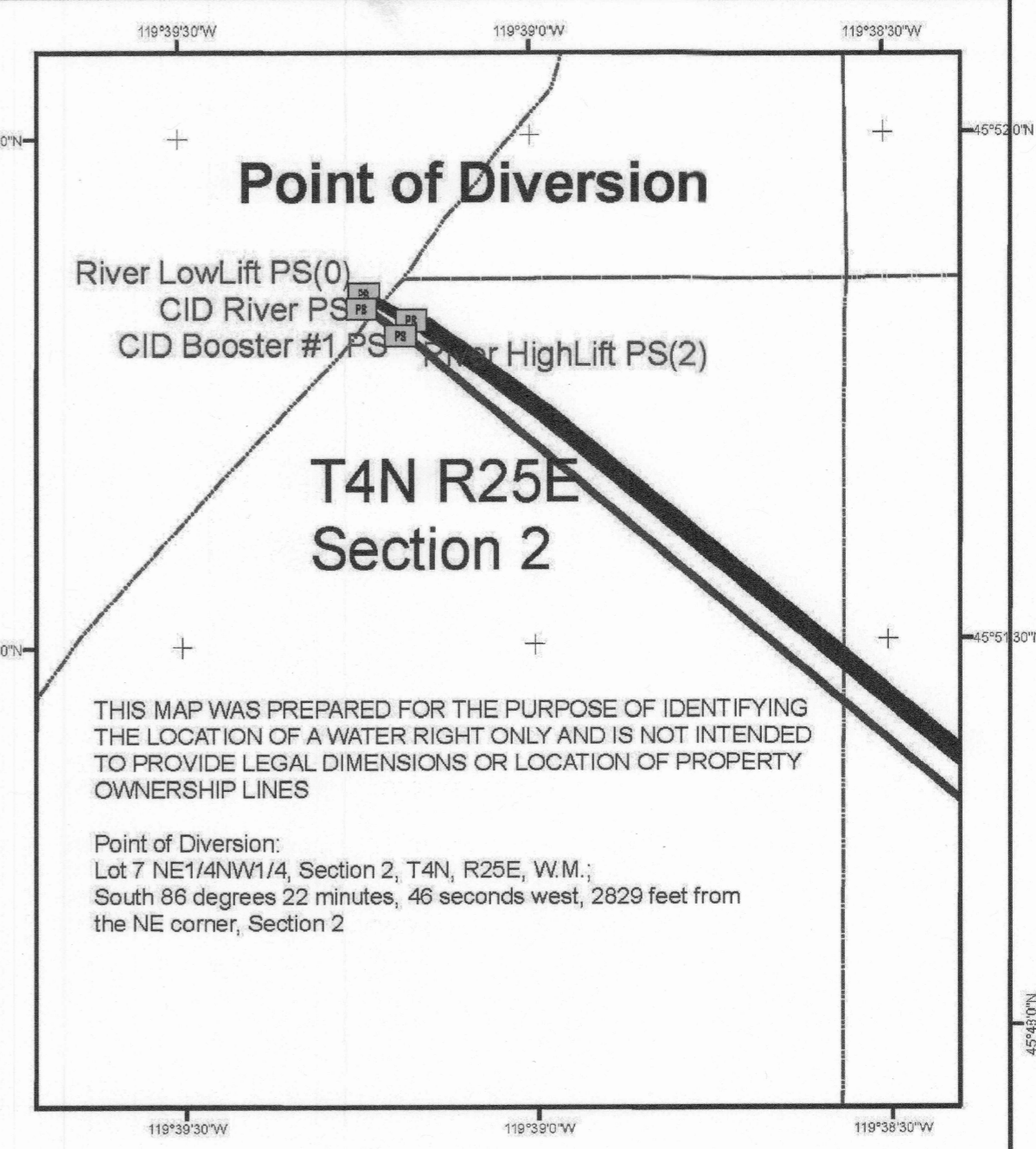
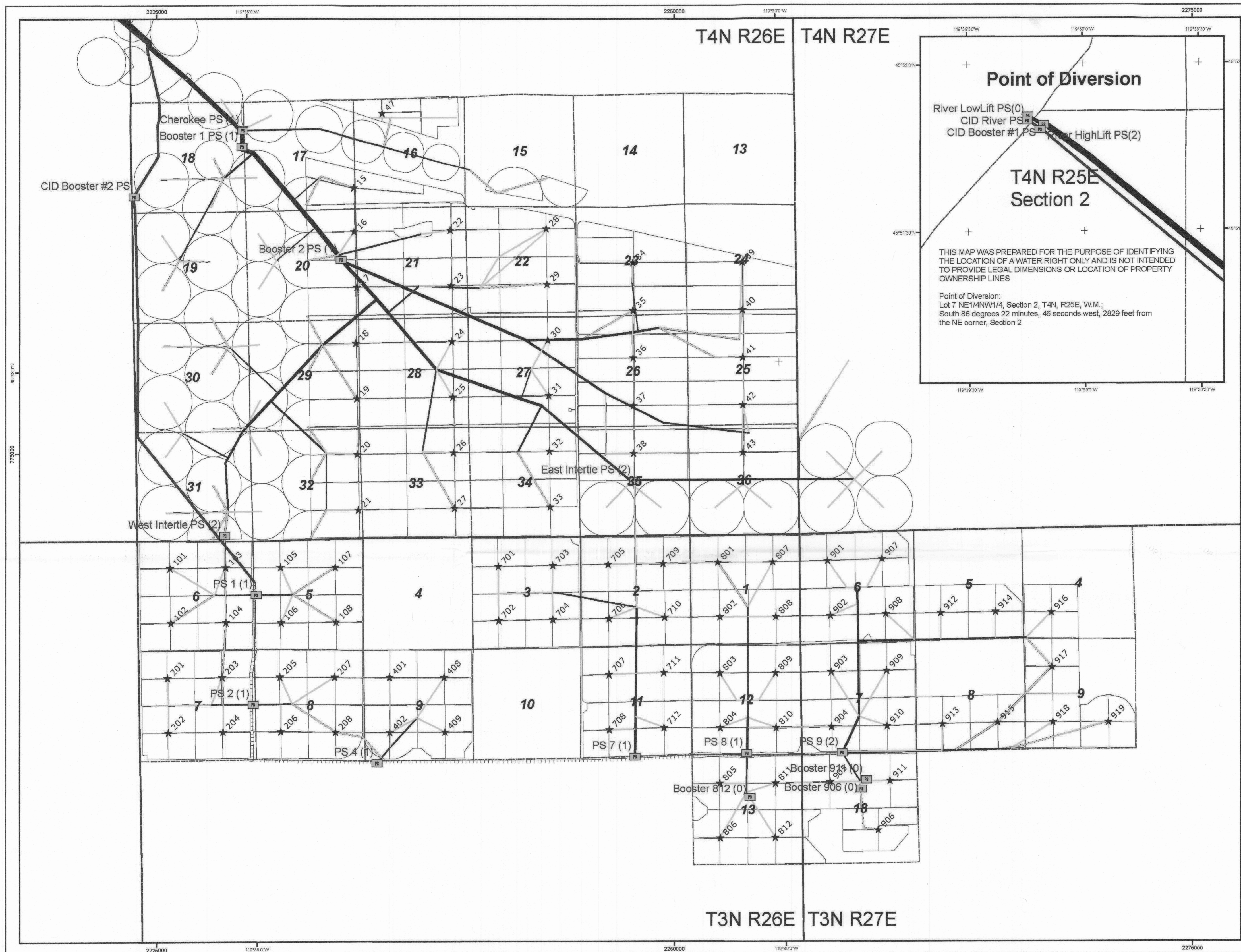
0 0.25 0.5  
 Miles

1 inch = 0.5 miles

This map was reproduced from a Water Distribution System and Flow Meter Location map submitted to OWRD by Potlatch Corporation in 2007 for the claim of Beneficial Use on Transfer T-8753, T8675, T8616, T8298, T8617 Lands subject to these transfers were served by the same distribution system as the current transfers. This map represent the existing distribution system for the drip irrigation of trees prior to any modifications to convert the system back to irrigation with center pivots.

Water Distribution System and Flow Meter Location Map  
 Applies to Certificates 76584, 76585, 76586, 83588, 83589, 83590, 83591, 83592, and 89511  
 Farmland Reserve Inc.  
 Boardman, Oregon Farm

RECEIVED  
NOV 03 2016  
OWRD



- Legend**
- ☐ Pump Station (No. of Flow Meters)
  - ★ Manifold
  - CID Canal
- Mainline Material, Dia.(in)**
- PVC, 4
  - PVC, 8
  - PVC, 10
  - PVC, 12
  - PVC, 15
  - PVC, 16
  - Steel, 12
  - Steel, 14
  - Steel, 16
  - Steel, 18
  - Steel, 20
  - Steel, 22
  - Steel, 24
  - Steel, 26
  - Steel, 30
  - Steel, 36
  - Steel, 42
  - Steel, 48
  - Steel, 54
  - Steel, 60
  - Steel, 72
- ☐ T&R
  - ☐ Section
  - circles
  - trees

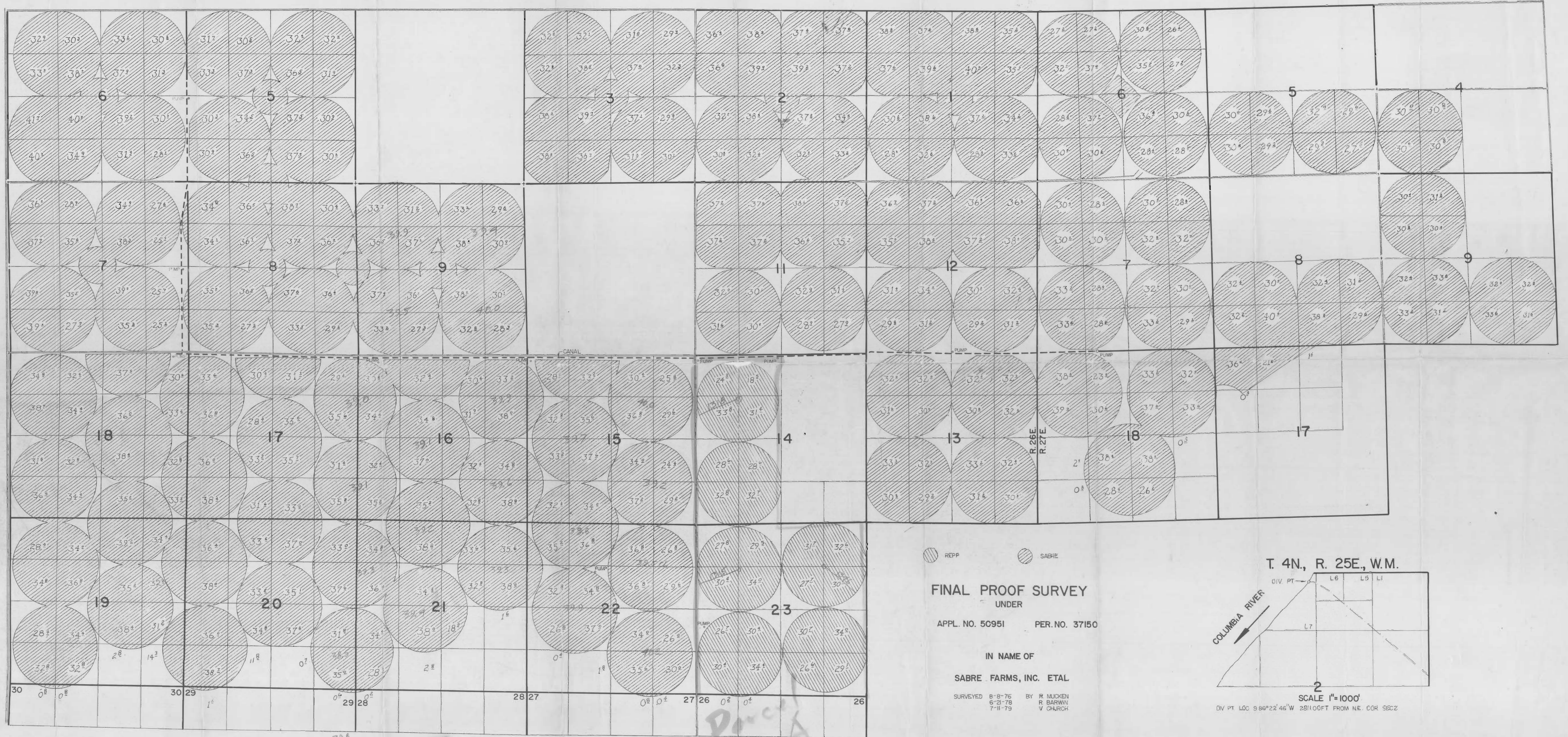
Drawn By: ADB  
OR North State Plane  
NAD 27 (FT)  
Date 01/05/07

0 0.25 0.5  
Miles  
1 inch = 0.5 miles

This map was reproduced from a Water Distribution System and Flow Meter Location map submitted to OWRD by Potlatch Corporation in 2007 for the claim of Beneficial Use on Transfer T-8753, T8675, T8616, T8298, T8617 Lands subject to these transfers were served by the same distribution system as the current transfers. This map represent the existing distribution system for the drip irrigation of trees prior to any modifications to convert the system back to irrigation with center pivots.

**Water Distribution System and Flow Meter Location Map**  
Applies to Certificates 76584, 76585, 76586, 83588, 83589, 83590, 83591, 83592, and 89511  
Fairland Reserve Inc.  
Boardman, Oregon Farm

TOWNSHIP 3 NORTH, RANGE 26 & 27 EAST, W. M.



REPP SABRE

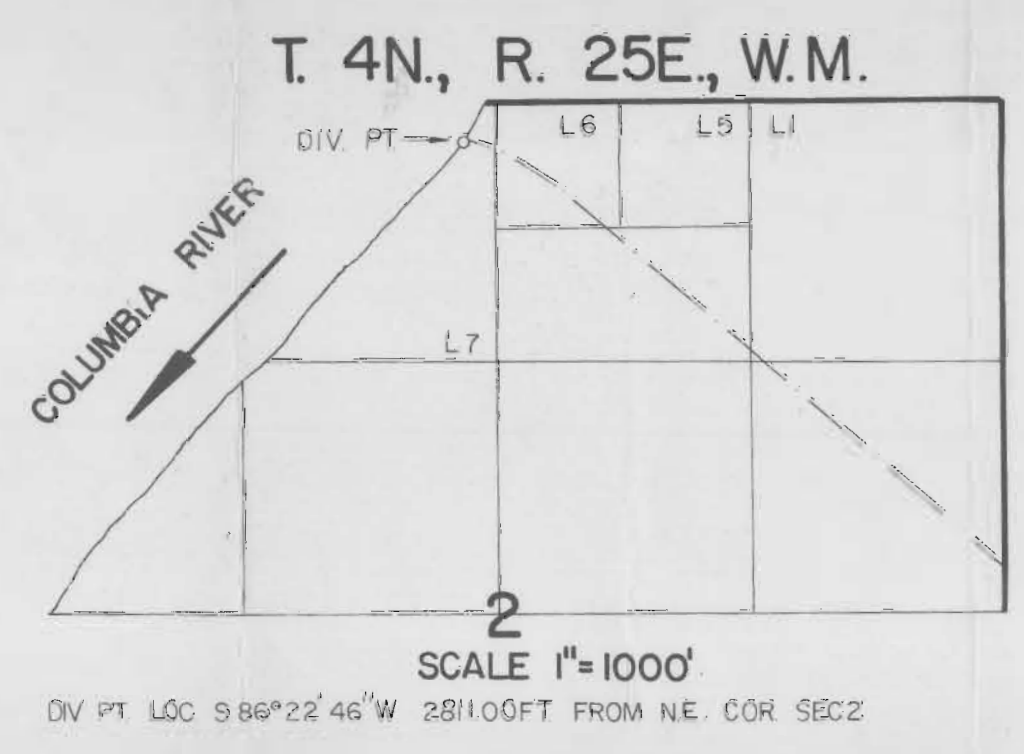
FINAL PROOF SURVEY  
UNDER

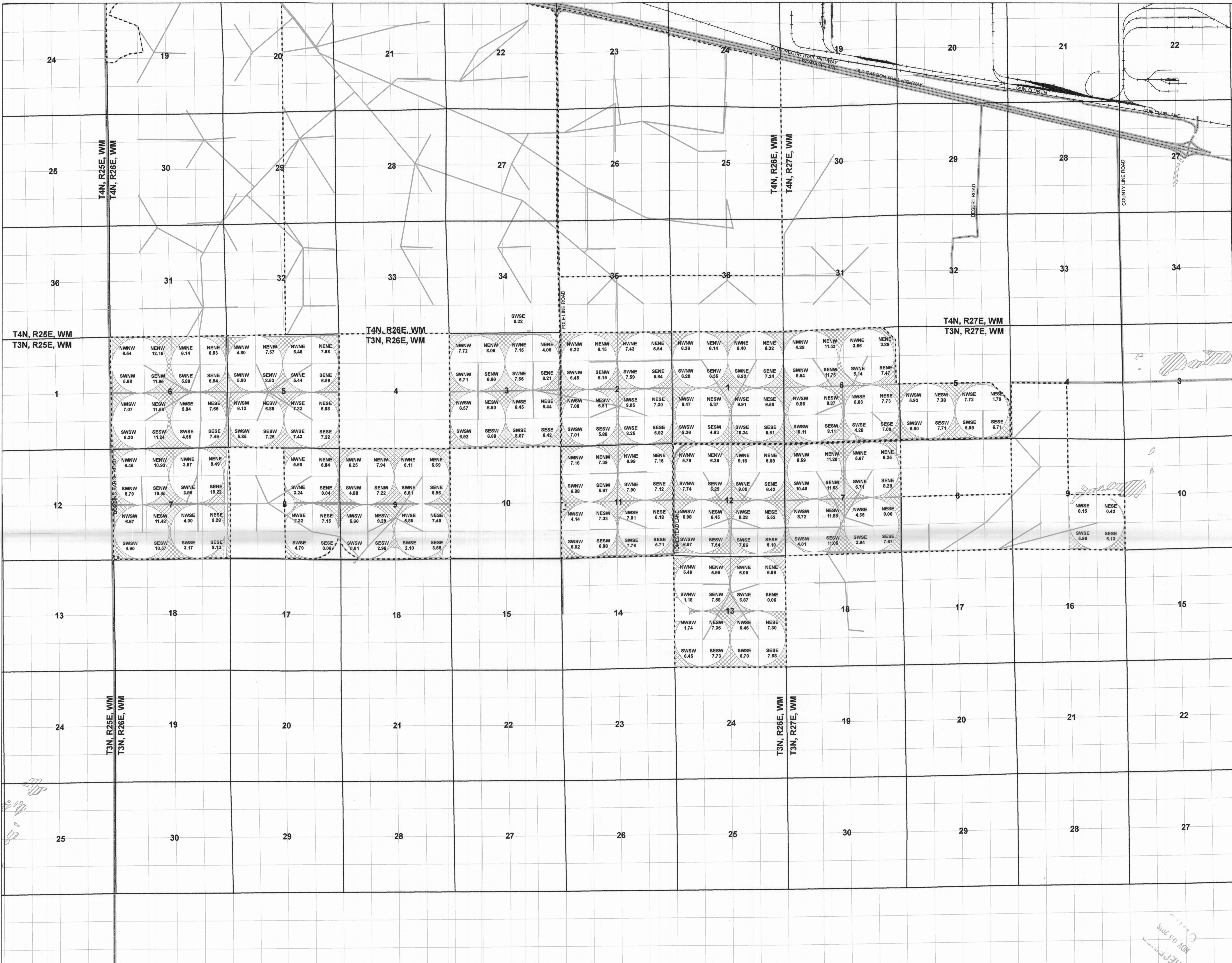
APPL. NO. 50951 PER. NO. 37150

IN NAME OF

SABRE FARMS, INC. ETAL

SURVEYED 8-8-76 BY R. MUCKEN  
6-21-78 R. BARWIN  
7-11-79 V. CHURCH





**LEGEND**

- FRI Property Boundary
- Lands Left Unchanged (Remaining Right)
- PLS Sections
- Water Bodies
- Railroads
- Pipelines
- Paved Roads

SESE 30.52 Quarter Quarter Section Location and Water Right POU Acre

0 1,000 2,000 Feet  
1 inch = 2,000 feet

This drawing is an exhibit for a Water Right Permanent Transfer. This map is not intended to provide legal dimensions or locations of property ownership lines. Property lines and/or other lines of occupation shown hereon are not represented by the undersigned to meet accuracy standards of Land Surveys.

CHRE: Jason Smaesrud  
 Drawn By: Edward Douglas  
 Date: October 2016  
 Projection: NAD83 Oregon Statewide Lambert, International Feet

Certified Water Rights Examiner  
 #61436WRE  
  
 Jason A. Smaesrud  
 July 12, 2005  
 STATE OF OREGON

EXPIRATION DATE: 6/30/2018

Remaining Rights Map  
 Permanent Water Rights Transfer  
 Certificate 76586  
 Farmland Reserve Inc.  
 Boardman, Oregon Farm

T3N, R26E, WM and T3N, R27E, WM  
 Morrow County, Oregon

The POU consists of 8 foot wide irrigated strips located on 10 foot centers marked by the tree rows