

Section 3, T4S, R1E, W.M., Clackamas County

Application G-16435, Permit G-16014

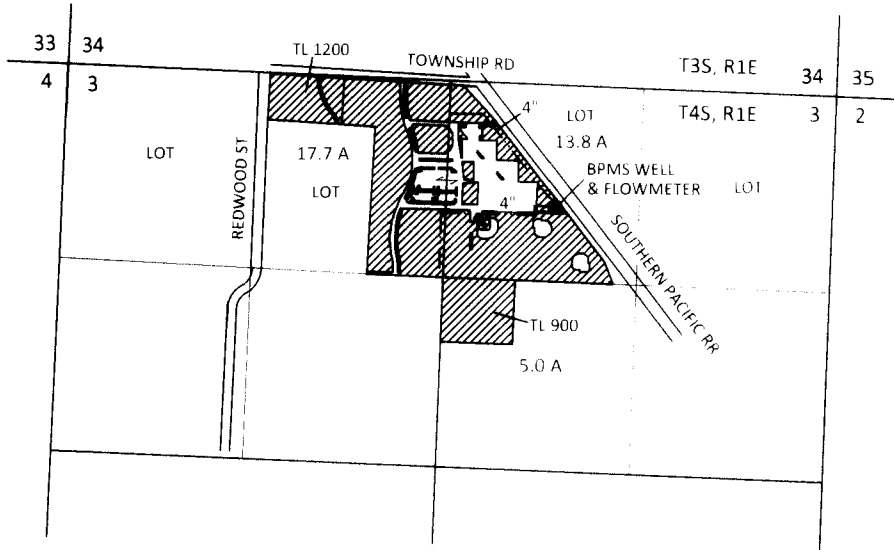
CLAIM OF BENEFICIAL USE MAP

Canby School District

Baker Prairie Middle School

SEP 11 2016

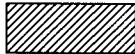


SEP 11 2016

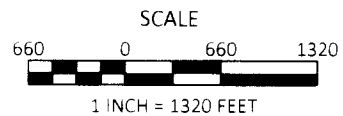
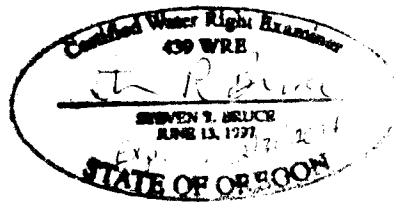


WELL LOCATION: 760 FT S AND 1910 FT W
FROM NE CORNER OF SECTION 3, T5S, R5W, W.M.

SITE INSPECTION CONDUCTED AUGUST 16, 2016

EXPLANATION

-  PLACE OF USE IRRIGATION (36.5 ACRES) PRIORITY: 4/12/2005
-  WELL
-  PIPELINE (APPROX.)



September 6, 2016

This map is not intended to provide legal dimensions or locations of property ownership lines

FIGURE 1

SKOOKUM

WATER ASSOCIATES, LLP

1626 VICTORIAN WAY
EUGENE, OR 97401
(503) 319-8926