

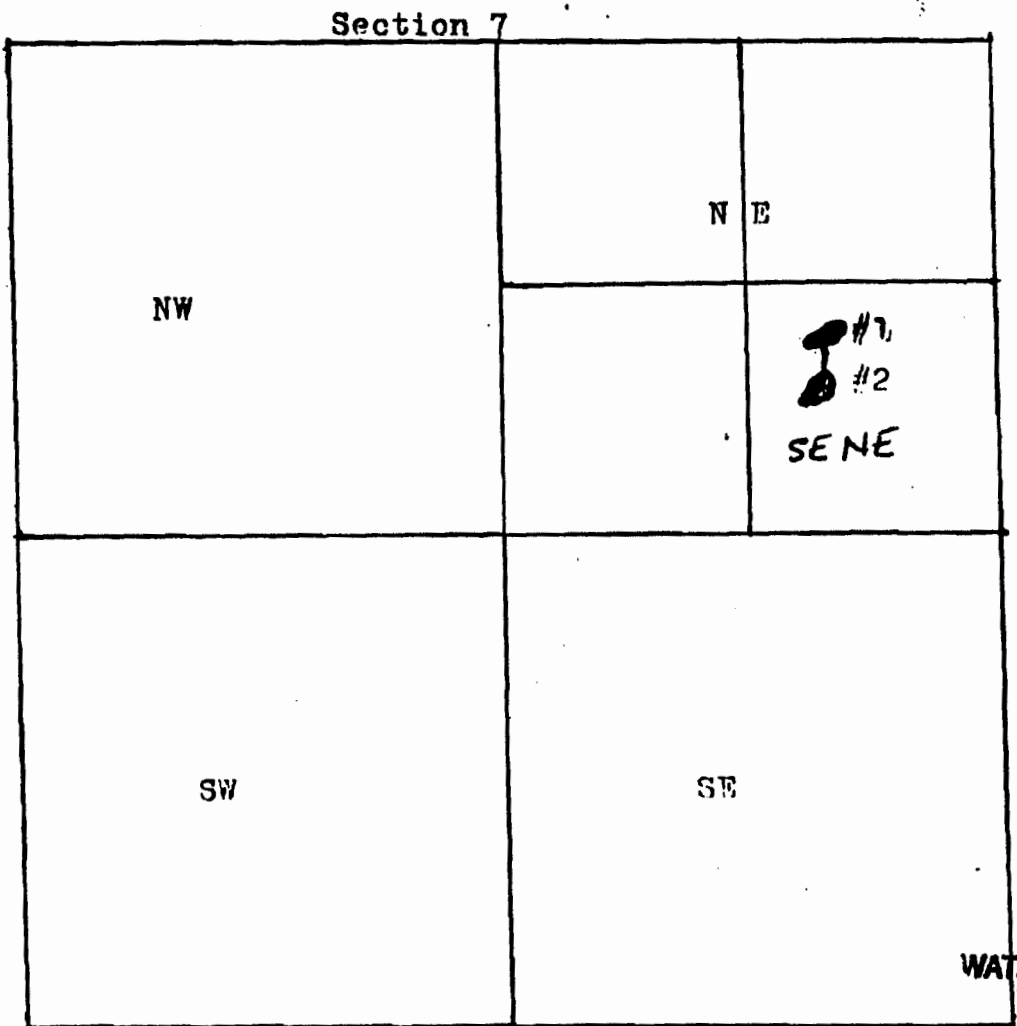
Site Location: NE 1/4 of Section 7; T.34S.; R.5W.; W.M.; Tax Lot 116

Pond Location in Section 7: Pond #1 is 4,224' east and 3,696' north of SW corner of Sec. 7 and 584' south and 792' west of NE corner of Sec. 7. Pond #2 is 3,432' north and 806' west of SE corner of Sec. 7. and 4382' east and 1,848' south of NW<sup>corner of</sup> Sec. 7.

CORRECTED APPROX ADJUSTED SCALE  
1" = 1000 FEET



Scale: 5" = 1 mile  
1" = 1,000'



RECEIVED BY OWRI

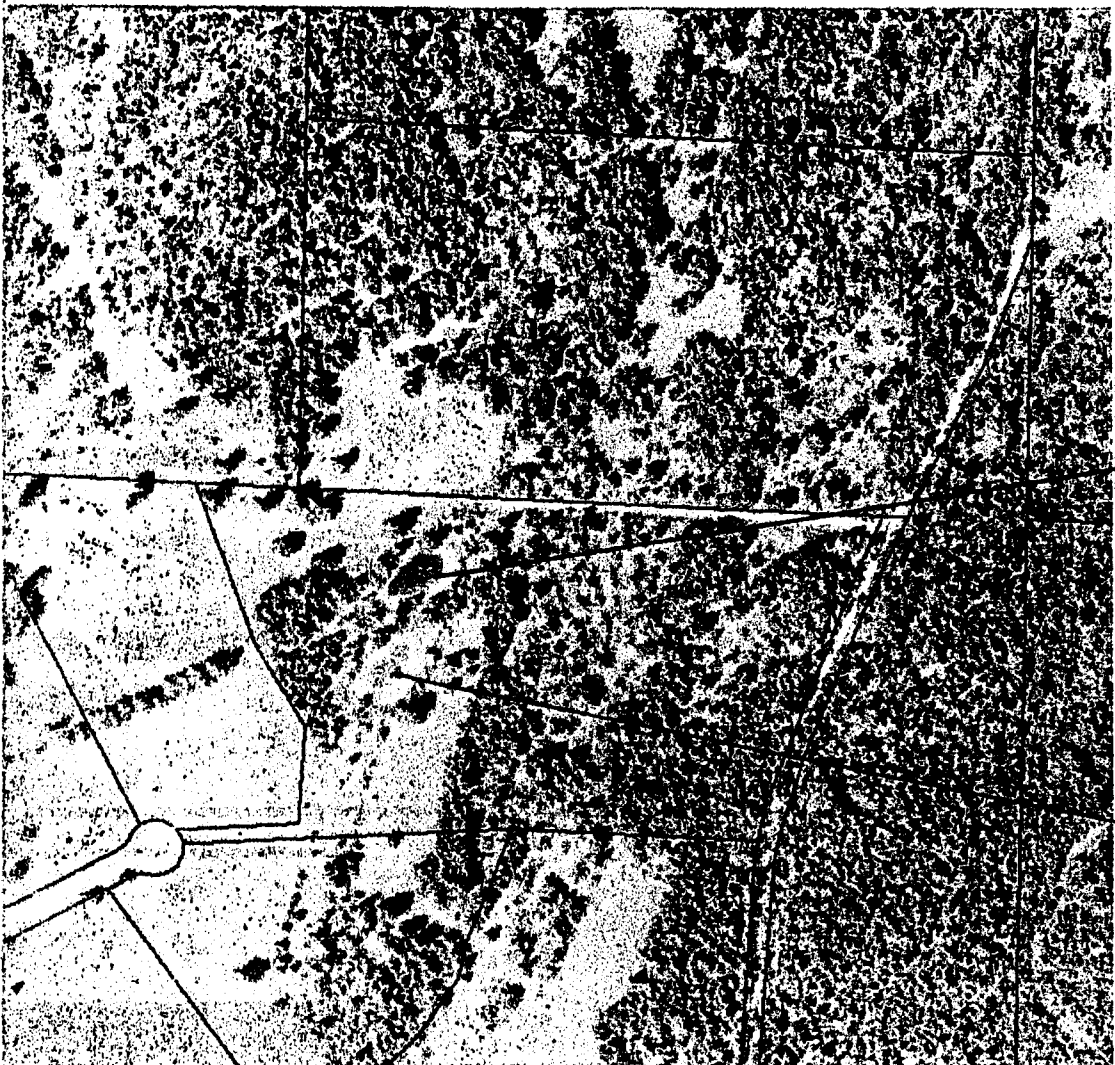
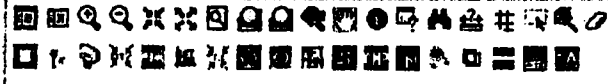
JAN 10 2017

SALEM, OR

**RECEIVED**

FEB 08 2007

WATER RESOURCES DEPT  
SALEM, OREGON

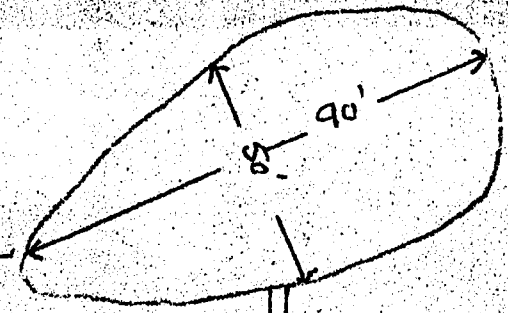


Property Information

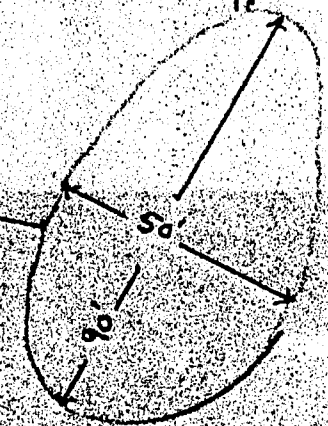
Search By:

Vendor Search

Pond #1 90'L x 50'W x 8'D



Pond #2 90'L x 50'W x 9'D



RECEIVED BY OWRD

JAN 10 2017

SALEM, OR

Scale 1:4815 OK

Pan

