

SCALE 2.4" = 1320'

BOOK 20

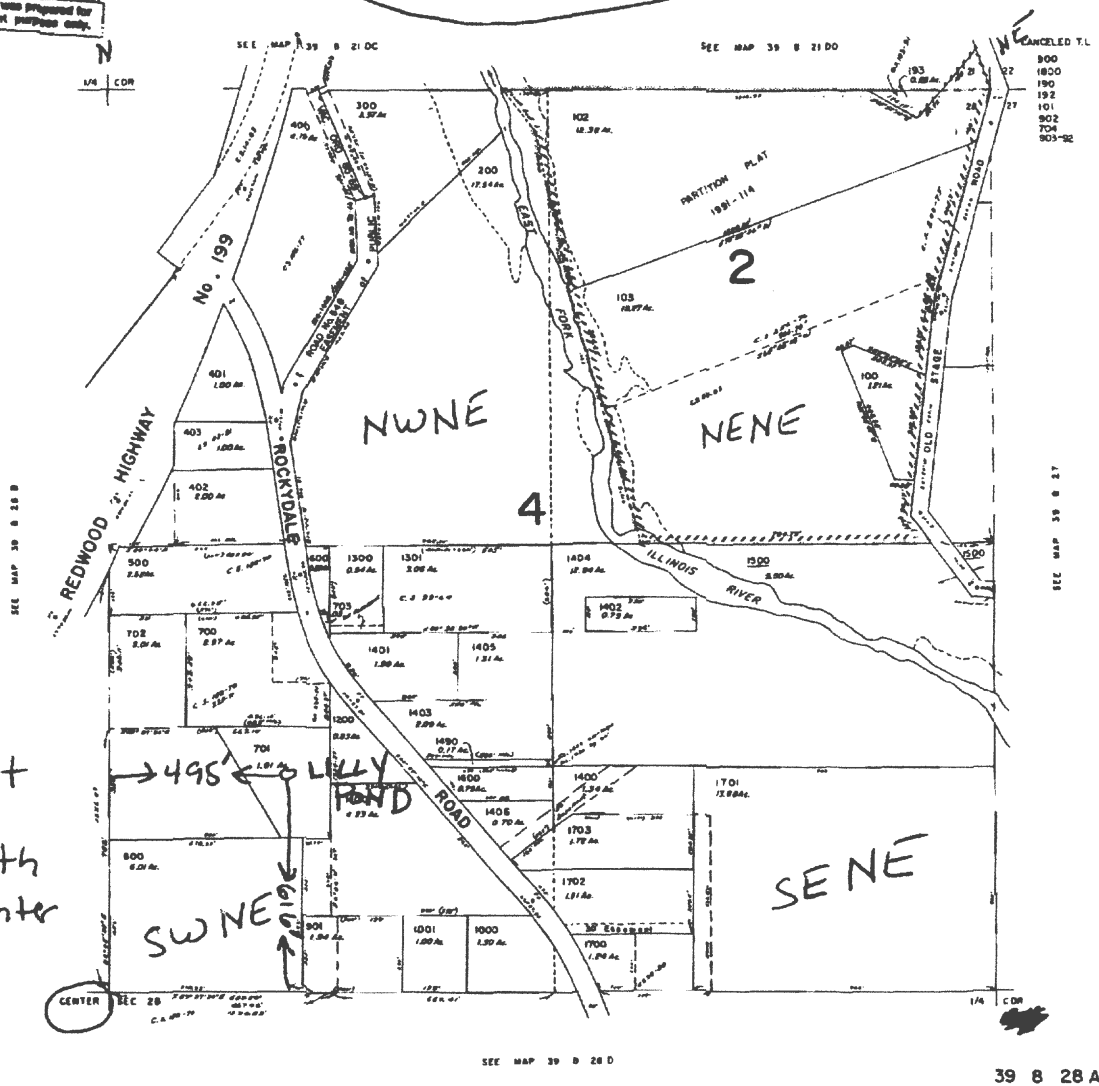
NE1/4 SEC 28 T39S. R8W. W. M.  
JOSEPHINE COUNTY

39 B 28 A

This map was prepared for  
assessment purposes only.



RECEIVED  
OCT 06 2006  
WATER RESOURCES DEPT  
SALEM, OREGON



495' East  
and  
616' North  
from center  
of Section  
28

RECEIVED BY OWRD

FEB 27 2017

SALEM, OR

app no R 86696